

AKAI

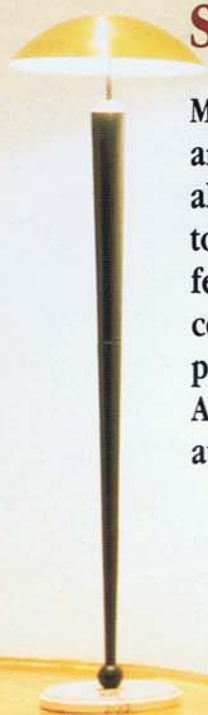


*Comprehensive
Audio Catalog
'91-'92*

Akai—Creative At Heart.

Unwavering Commitment to Excellence Meets All Budgets, Satisfies All Tastes.

Music lovers, musical tastes, and budgets come in all shapes and sizes. Now Akai can offer systems and components for almost any combination. Whether you're interested in our top-of-the-line Reference Master Series, the classic lines and features of the Pro Series, midi/mini systems or components, Akai has it all—from massive amplifiers to personal headphone stereos—with one thing in common: Akai's unswerving commitment to quality, functionality and audio excellence.







FX SERIES System M830/M

Digital Integrated Amplifier:	AM-M830
CD Player for System M830:	CD-M630
CD Player for System M830M:	CD-M830M
Double Cassette Deck:	HX-M830W
Quartz Synthesiser Tuner:	AT-M630/L
Digital Sound Processor:	EA-M830*
Fully Automatic Turntable:	AP-M630*
3-Way Speaker System:	SR-830**

* Optional

** Speaker systems may differ in some markets.

Systems with Fascinating Options

Akai's top selling mid-sized systems now offer important options that let you choose the system just right for you. System M830M comes with a CD autochanger. But there's System M830 with a CD single-play unit, too.

You can add a graphic equaliser with fascinating new digital sound processor features for expanded listening pleasure. And if you are among the many who still enjoy LPs, you can hear them at their best on the optional fully automatic turntable.

A Digital and Optical Super-Amp

Akai's advanced digital technology makes the AM-M830 super-amp the ideal centre of your listening pleasure. It's packed with state-of-the-art digital and audio engineering advances. Optical Linkage transfers the pure digital sound along a beam of light to the AM-M830, neither suffering from losses, noise and distortion nor generating any digital noise itself along the way.

The amp's twin digital-to-analogue 18-bit superconverters, one for each stereo channel, give an accurate and sharply detailed stereo image. The internal digital filters also use 18-bit data processing, two more than the 16 bits of the CD signal, increasing fidelity four-fold. They also use oversampling to multiply the sampling frequency by eight, making each digital 'step' that

much more accurate. This lifts noise way above the audible frequency range. The result is unmistakably superior CD sound.

And for the future, when DAT decks and direct broadcast satellite (DBS) signals become available, the AM-M830 is ready with digital inputs that switch automatically to the right sampling frequency.

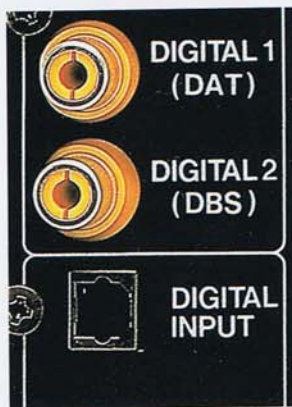
Super-Power Output

The generously rated power output section gives over 900 Watts of peak music power from each channel, providing tremendous reserves of power for impressively realistic listening levels. That's enough power to drive both of two A/B speaker systems that can be connected... and to supply two different rooms with true high-fidelity sound. There's also Akai's own Dynamic Turbo Equaliser and 'loudness' compensation for extra realism when listening at low volumes.

Intelligent Operation

Digital intelligence lets the system talk to you — from a friendly greeting when you switch on, through helpful prompts on how to operate the controls, to a final 'See you again' when you switch off, using the 10-character display on the tuner.

The Digital-Optical Link Display is an attractive visual reminder of the optical advantage, with a moving pattern of light that links the CD player (single-play or autochanger) with the digital super-amp.



s, optically linked into intelligent ning pleasure.



An Intelligent Tuner, Too.

The AT-M630/L has the intelligence to scan the wavebands and automatically memorise up to 30 stations for instant selection, with conventional auto-tuning and manual presetting at your pleasure.

It also provides a multi-program timer for absent recordings, alarm-clock and lullaby settings of all system components.

A Superb Double-Cassette Dual-Reverse Deck

This deck has all the features and functions for fullest possible enjoyment. Dolby B and C noise reduction are supplemented by the advanced Dolby HX Pro system for wider dynamic range and cleaner, clearer recordings. The two drives can be used for high-speed dubbing, and both can record, either at the same time or sequentially. The synchro start function makes recording from CDs a simple pleasure. And there

are a wide range of auto-play functions that let you skip unwanted items, or scan the first few seconds of each item to find the one you want.

Three-Way Speaker Systems

The SR-830 speaker systems' woofer, midrange and tweeter units cover the entire audio spectrum, from the delicate shimmer of strings, the brilliance of the brass, and the deeply satisfying bass. Bass reflex design enhances low-frequency response.



Optional Components

CD-M630: CD Player for System M830



This superior CD player offers the same advanced automatic CD editing functions for cassette recording as the CD-M830M, banishing the frustrations of recordings interrupted by cassette reversal.

EA-M830: Optional Digital Sound Processor and Graphic Equaliser



In terms of enhanced playback capabilities and sheer enjoyment, this is not an option, it's a necessity!

Add any one of ten separate tonal characteristics to the sound you're listening to: from an echoing church to an enormous outdoor stadium by way of a classical concert hall. And know that Akai's digital sound processing does it while preserving top tonal quality. Give precise boost or cut to frequencies in each of seven bands on both channels independently. And do it all at the touch of a button.

Watch the seven-band full-range spectrum analyser. Or any one of a number of different displays of the sound fields created by the EA-M830. It's a fascinating addition to your enjoyment of audio, and one of which you will never tire.

CD-M830M

CD Autochanger for System M830M

Single and Autochanger Play

This unusual unit takes both 6-CD magazines and single CDs. So you can play your latest purchase without having to insert it in a magazine. Another unusual feature is the CD title memory. Titles up to six characters long can be entered, and will be remembered and displayed for that CD, whenever it is inserted. Up to 30 CDs can be memorised in this way.

Programming can select any items on all six-plus-one CDs. Or random play can mix the items on a single CD. And intelligent CD editing either re-records items from the beginning if they were interrupted by tape cassette reversal or selects an item that will fit, with a choice of silence between items or cross-fading.



AP-M630: Optional Automatic Turntable



Put the LP on the turntable, and press the start button: the superb cartridge is lowered gently to the surface at the start, and moved back to its rest at the end of playback — automatically.

Digital Components



FX SERIES System M630/M

Digital Integrated Amplifier:	AM-M630
CD Player for System M630:	CD-M630
CD Player for System M630M:	CD-M830M
Double Cassette Deck:	HX-M630W
Quartz Synthesiser Tuner:	AT-M630/L
Digital Sound Processor:	EA-M830*
Fully Automatic Turntable:	AP-M630*
3-Way Speaker System:	SR-630**

* Optional

** Speaker systems may differ in some markets.

Your Digital Future Can Start Today!

The day you select an M630 or M630M system, with one or more fascinating options, is the day your digital enjoyment starts. So whether you choose System M630M's 6+1 CD autochanger, or System M630's CD single-play unit, and whether or not you choose to add the EA-M830 Digital Sound Processor, with its expanded listening pleasure and graphic equaliser, satisfaction is assured. (See full descriptions of all these units and the optional automatic turntable unit on the previous page.)

A Digital and Optical Super-Amp

The AM-M630 super-amp features an Akai 'special': Optical Linkage transfers the pure digital sound along a beam of light from CD player to amp. This prevents noise and interference from ever spoiling enjoyment.

The amp's twin digital-to-analogue 16-bit converters give astonishing stereo realism. And the digital filters use oversampling to multiply the sampling frequency by four, making each digital 'step' that much more accurate. This lifts digital noise out of the audible range, for smoother, clearer and cleaner CD sound.

Super-Power Output and Intelligent Operation

With a generous 750W of peak music power output, this digital super-amp is the centre of an intelligent system that uses the 10-character display of the AT-M630/L quartz synthesiser tuner as a window into its mind — confirming your

remote-control commands as well as displaying station frequencies. Just touch the CD, tuner, or tape button and the system will switch itself on and automatically begin playback or reception.

With an Auto Station Memory that selects up to 30 of the strongest stations, and with presets for 30 stations altogether, the tuner also has a timer for absent recording and to wake you — or lull you to sleep.

A Superb Double-Cassette Single-Reverse Deck

With both Dolby B and C noise reduction, for freedom from annoying tape hiss, there are plenty of other features for full enjoyment.

High-speed dubbing? Continuous playback from first one drive then the other? Auto-reverse on the recording drive? — the HX-M630W has them all. Most important of all, the CD synchro function makes recording from CDs a simple pleasure. Intelligent CD Auto Editing either re-records items from the beginning if they were interrupted by cassette reversal, or selects an item that will fit, with a choice of silence between items or cross-fading.

Three-Way Speaker Systems

The SR-630 gives three-way coverage of the audio spectrum, with bass reflex design to enhance low-frequency response and separate mid-range and tweeter units for extended 'highs'.



AX SERIES System M430/M

Digital Integrated Amplifier/
Double Cassette Deck/and Graphic
Equaliser:

CD Player for System M430:

CD Player for System M430M:

Quartz Synthesiser Tuner:

Fully Automatic Turntable:

3-Way Speaker System:

AX-M430

CD-M630

CD-M830M

AT-M430/L

AP-M630*

SR-430**

* Optional

** Speaker systems may differ in some markets.

Making Digital Excellence Affordable

While both M430M (with 6+1 CD Autochanger) and M430 (with CD Single Play Unit) have the unmistakable looks and performance of high-fidelity audio, the integration of digital amplifier and double-cassette deck into a single unit with its own graphic equaliser makes Akai's special Digital Optical Link technology available to a much wider range of music lovers.

This well-established advantage uses a beam of light to carry the pure digital sound from CD to amp, so that noise and interference never spoil enjoyment. It's performance that puts these systems at the top of their class, with an eye-catching display that reminds you, your family and your friends of this function every time you play a CD...

Pure Power, Under Perfect Control

With 600W of peak music power, for listening levels that do justice to the latest, most dynamic CDs, you will appreciate the ease and sophistication of system controls.

The wireless remote control unit controls all units, including the tape deck with its feather-touch controls, from the comfort of your chair. Even the volume is controlled by a special motor, for convenience and top audio quality.

And the graphic equaliser provides complete control of sound quality, to match the acoustics of your listening room and your own personal preferences, with effects you can see, as well as hear.

An Intelligent Tuner

This tuner will automatically seek out the strongest 30 stations and preset them for you. There are 30 presets in all across all wavebands. The five-character station-frequency display also confirms your control selections! Messages scroll slowly past at an easily readable speed.

The multiple timer allows for absent recordings, alarm-clock settings, or automatic 'sleep' switch off.

A Superior Double-Cassette Single-Reverse Deck

Dolby B noise reduction gets the best of prerecorded cassettes, while there is a full range of other features for your enjoyment, including high-speed dubbing, continuous playback from first one drive then the other, and auto-reverse on the recording drive. CD Synchro and Intelligent CD Auto Editing functions are the same as the System M830/M to ensure that cassette reversal never spoils enjoyment.

Three-Way Speakers plus Surround Speaker Option

A three-way combination of woofer, mid-range unit and tweeter do justice to the superior quality of this digital system, which offers the additional attraction of 'Surround' outputs. Purchase optional AE-S91 Surround Speakers for an astonishing enhancement of realism, turning the smallest room into a concert hall.



System M50

System M50

This complete mid-sized component system provides all the features you want and expect from home stereo, in a stylish, perfectly integrated package.

The Heart of the System

At the heart of System M50 is the AC-M50 HiFi Midi Stereo System. The 30 watt/channel integrated amplifier can generate 500 watts/(PMPO) for intense or prolonged peaks with minimal distortion. It

includes microphone mixing and level and speaker outputs for surround sound. Its integral 7-band graphic equalizer and LCD spectrum analyzer allow you to 'shape' the sound to match the acoustics in your room, or adjust for the different types of music you enjoy. The precise three-band PLL synthesizer tuner has 19 random presets for memorizing your favourite stations, a digital LCD display, and clock functions. And the double cassette deck can relay-play from one deck to the other for continuous play, and provides normal- and high-speed dubbing and auto tape selection (Normal/CrO₂), all with the

uncompromising clarity of Dolby B noise reduction.

Expand and Customize

System M50 includes the rich sounds of the SW-M70 3-way speaker system and a wireless remote control, but you can customize your system with other matching components. Choose the AP-M70 semi-automatic turntable for enjoying your record collection, or move up to CD sound with the CD-M70 compact disc player. Its features include 20-track random programmability and a comprehensive LCD display with 20-track music calendar.

System M393

Akai's System M393 combines all the most popular elements of high fidelity in a mid-sized component package that is both powerful and affordable.

The system provides 30 watts per channel of clean power, a PLL synthesizer tuner, and a 16-bit CD player with a full complement of skip and repeat functions. The double cassette deck includes continuous play functions as well as normal- and high-speed dubbing. A five band graphic equalizer, semi-automatic turntable AP-M393 and three way SW-M393 speaker systems round out this comprehensive system.



anding performance

System MX100

Akai sets new standards for mini component performance with the introduction of its new MX series stereo systems. By selectively integrating the components it was possible to maximize performance and economy while minimizing the dimensions, so the out-of-the-way design can provide outstanding performances of all media.

The Akai Approach to Mini Systems

The integrated amplifier/double cassette deck provides 30 watts per channel, but is capable of peaks of up to 500 watts (PMPO), enough to cope with the most demanding of contemporary or classical passages. The integral 7-band spectrum analyzer includes presets for classical, popular, vocal, jazz, background music or EQ-off. A surround switch offers improved spatial presence. And the motor-driven volume control with LED indicator allows remote setting from across the room.

Full-featured Recording

The double cassette deck includes full logic feather-touch operation for precise control either at the panel or from the remote control. Dubbing from deck I to deck II can be performed at either normal or high speed, and the CD synchro recording



System MX100

function controls the tape functions from the CD player for one-touch operation. The Dolby B noise reduction system nearly eliminates 'hiss,' and the auto tape selector (Normal/CrO₂) makes sure the deck adjusts for optimum sound quality-automatically.

Comprehensive Control Functions

The integral tuner/CD player includes comprehensive sidelit LCD displays that indicate all status and function information

for each component. The CD player includes a 20 track music calendar, 20 track programmable play order, and repeat. The PLL synthesizer tuner offers 19 random station presets and clock functions.

The standard RC-S100 remote control unit commands all functions from your seat. And matched 3-way speakers with bass reflex not only offer impressive sound, but are designed to match the profile of the entire system whether mounted vertically or side by side.

System MX90

The MX90 represents the ideal combination when you need uncompromising sound and quality that will fit a limited space and a limited budget, with a size and sound that are perfect for smaller rooms and apartment. The MX90 shares many of the same features of its big brother, the MX100,

in the same size package.

Big Power in a Small Package

The amplifier provides 25 watts per channel with peaks of up to 440 watts (PMPO), and the Sound Character presets for classical, popular, vocal, jazz, background music, and EQ-off let you match tonal characteristics with each type of music you listen to. The double cassette deck has high-speed dubbing and Dolby B noise reduction for

quick, noise-free recording and playback. The continuous play function and auto tape selector permit easy, hands-off operation. A PLL synthesized tuner permits up to 19 station presets, and has a multi-function LCD display and clock functions. And the CD unit has a 20-track music calendar and 20-track random programme play function.

Included are the 2-way bass reflex speakers, and a full-featured remote control that commands all aspects of the MX90's operation.



Optional Components

AE-S91: Surround Speaker



Akai's unique backloaded horn design provides a spatial dimension to your music that will turn the smallest room into a concert hall, and enhances bass response as well. Just place them opposite your main speaker set, and the phase characteristics of the remote speakers will create a dramatic 'surround' sensation that will substantially increase the apparent size of your listening environment.



Pro System 27

Pro System 27

AM-27 amplifier
 SR-830 speakers
 HX-27W stereo double cassette deck
 CD-27 CD player
 AT-27/L quartz synthesizer tuner
 EA-27 stereo 10-band graphic equalizer
 AP-A305-C turntable

Akai knows the meaning of classic hi-fi. Today, as audio components shrink and their functions and controls get more complicated, Akai understands that there are still audiophiles who know the value of clean, uncluttered design. People who know that economy of design doesn't have to mean compromising quality or sound. Connoisseurs who appreciate the appeal of solid, massive construction and the essential elements of high fidelity unspoiled by bells and whistles. It is for that type of audiophile that Akai produces the Pro Series component audio system.

A Solid Foundation of Power

Neither midi nor mini, the Pro Series Pro System is a true, traditional full-format component system. Begin with the AM-27 integrated amplifier. Its discrete architecture puts out 60 watts/channel into 8 ohms. A source direct switch enables digital sources to bypass extraneous circuitry for the purest possible signal. But also included is a processor terminal for connecting a graphic equalizer. A loudness control maintains audible bass levels even at low volumes. The five inputs are individually switch-selectable on the front panel, and outputs include Tape, Speakers A and B, and Headphones. The large pedestals increase resistance to vibration and the distortion that can result.

Dual Cassette Convenience

The HX-27W dual cassette deck allows

normal- or high-speed dubbing and sequential play for uninterrupted listening. Dolby noise reduction reduces hiss and scratch, and the automatic tape selector ensures optimum sound quality by matching the bias of whatever tape you use. The 5-LED peak level meter reacts quickly and accurately to help you precisely set recording levels. And a balance control lets you compensate for imbalance in the recording source.

Crystal-clear Reception

The AT-27/L quartz synthesizer tuner assures razor sharp tuning accuracy with a minimum of distortion and interference. Up to 20 FM and AM (MW/LW) stations can be set randomly and stored in the backup memory for instant, pushbutton recall. With preset scan, these stations can be quickly and conveniently scanned. Special circuitry eliminates annoying static between stations.

al sound:
yment.

Pro System 17

HX-27W stereo double cassette deck
AM-17 amplifier
AT-27/L quartz synthesizer tuner



Pro System 17

Heart of the Pro System 17 is the AM-17 amplifier. This high-performance unit, with its generous 35 watts/channel, is a proud member of the Akai amplifier lineup, and shares many of the features of its bigger brother, the AM-27. It, too, uses discrete architecture, with individual audio components chosen for superior sound quality, not pre-packaged ICs.

Powerful ... and Flexible!

It can also handle the full range of audio programme sources: CDs, the AT-27/L tuner, the HX-27W stereo double cassette deck, and aux (for a VCR or laser disk player sound, perhaps). It provides outputs not only for tape recording but also two pairs of A and B speaker systems — for enjoyment in two different rooms — and headphones for personal listening.

Two additional features make the AM-17 the ideal centre of a "Professional" audio system: the first is a Source Direct switch that bypasses most of the tone-control and other circuitry, connecting the programme source directly to the speakers for the purest possible sound. The second is a processor terminal that allows connection of the EA-27 10-band graphic equalizer for personalized control.

A Great Basic System

The identical tuner used in Pro System 27, the high-performance AT-27/L, ensures razor sharp tuning accuracy with a minimum of distortion and interference. And

it's convenient to operate, with memories for 20 favourite stations to be preset for instant access. All preset stations can be scanned automatically, allowing you to hear a few seconds of each before making your choice.

The dual-cassette deck is also the Pro System 27's HX-27W: with just about everything you could want for the very best in cassette recording and playback. That includes high-speed dubbing and sequential playback for long, uninterrupted enjoyment.

And Great Options for Expansion

If you still enjoy LPs, the AP-A305-C will let you hear them at their best. And if you want to get into the new and expanding world of CDs, the CD-27 is a cost-effective high-performance player that will astonish you with its superb sound quality and convenient features.

And the EA-27 graphic equalizer, with 10 bands of precise audio control for each channel, and you have a system that offers performance at the very top of its class.

Optional Components

CD-27: CD Player



The CD-27 compact disc player includes features such as music calendar, random and programme play, and auto programme edit. For the cleanest sound possible the CD-27 uses advanced interpolative dual D/A converters and an optical digital signal output.

EA-27: Graphic Equalizer



The EA-27 10-band graphic equalizer lets you tailor the texture and tone of your music to suit your mood and taste with independent left and right channel adjustments in each of 10 frequency bands. Defeat switch allows instant comparison with flat response.

AP-A305-C: Turntable



The AP-A305C semi-automatic turntable uses a DC servo-motor for rotational accuracy, and a low-mass straight tone arm virtually eliminates lateral tracking error for minimal record wear. The ideal unit for getting the best from precious LPs.

Note: The products on these two pages are available only in 220 V AC models.

Stereo Cassette Deck

Cassette decks for superb tape playback performance.



GX-95 MKII

Reference Master

GX-95 MKII/GX-75 MKII

Stereo Cassette Decks

The dedication to perfection in tape deck design and construction has made Akai decks the reference standard for the entire industry. And as the flagships of our line and the uncompromising examples of the best of everything in Akai tape decks, we are proud to introduce the Reference Master GX-95 MKII and GX-75 MKII.

The Finest Head Configuration...

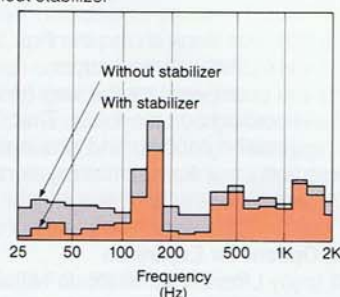
Each unit features the Super GX 3-head system, which combines a crystal ferrite head core with linear-crystal oxygen-free copper wiring for the very finest in home stereo sound reproduction. To take the fullest possible advantage of the high potential performance of the GX heads, separate (discrete) recording and playback heads and a completely independent head-mount structure have been adopted. This

structure allows the independent azimuth adjustments which are impossible with conventional combination-type heads.

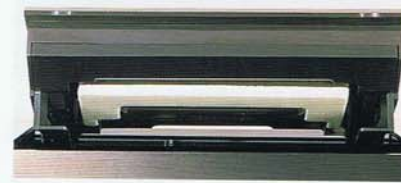
... and Transport Mechanism

Next, both decks feature a closed loop DD

Comparison of cassette performance with and without stabilizer



double capstan tape transport to maintain ideal tape tension and optimum head-to-tape contact. The dual-construction reels developed by Akai absorb rotational variations in the take-up reel during both recording and playback, giving much clearer, un-muddled sound. Dual Wide tape guides are used for extra-stable running, and the shafts are finished with inverse current hard chrome to improve tape grip.



Vibration-absorbing Sorbothane cassette stabilizer

Super GX Head with LC-OFC

A 3-head system is definitely the choice of those desiring the very finest reproduction available from a home stereo component system. It has completely separated gaps—one exclusively for recording and another exclusively for playback. And Akai was able to optimize the design for truly excellent performance. A four micron recording gap-width and a one micron playback gap-width optimize magnetic field-strength during recording, assuring broad

frequency response characteristics during playback with virtually no azimuth loss.

The Twin Field Super GX Head also has separated gaps for recording and playback. Therefore the performance is almost equal to a 3-head system except for monitoring of the just-recorded signal. Linear Crystal Oxygen-Free Copper used in wiring reduces signal transmission distortion and provides better electrical linearity. This gives better recording purity,

extended frequency response and wider dynamic range for rich resonance, for the feeling of live sound.



recording and

Both decks boast a special high-strength support construction that eliminates stray mechanical vibrations and unwanted resonance for clearer sound reproduction, especially in the higher frequencies.

Attention to Electronic Details

No detail has been overlooked in the electronic circuitry. Electronically induced noise was reduced by enclosing the amplifier in an exclusive casing, separate from the system control circuit board and the display and power supply circuits, and the internal cabling was minimized. A balanced transmission circuit has been utilized in the playback equalizer since it is insensitive to electromagnetic interference. To preclude feedback loops, the equalization circuits, headphone amplifier and left- and right-channel Dolby circuits all have separate stabilized power sources.

Both decks are equipped with a high-tuned DC playback amplifier that routes the signal from the playback head to the Line Outputs. All parts have been carefully selected for optimum sound quality. There is even a switch for disabling the display panel, to eliminate the possibility of noise from that source.

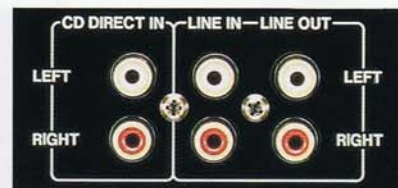
Two-Level Bias/rec Calibration

An exclusive calibration oscillation circuit facilitates precise recording level adjustment. Low and high levels (400 Hz and 16 kHz, respectively) are shown simultaneously on the peak level meter for easy calibration. Recording from digital sources is enhanced by dedicated inputs that bypass the internal amplifier, eliminating yet another potential source of distortion.

During recording, the Dolby HX PRO headroom extension circuit monitors the recording signal and reduces bias



Transport mechanism



CD direct terminal

momentarily to accommodate high frequency peaks. When it senses the peak has passed, the bias is restored to the normal level so no signal is unnecessarily lost. Dolby HX PRO headroom extension improves the saturation of normal tapes so much that it approaches that of metal position tape.

Other Features

Operation is push-button convenient with the wireless remote control. Akai's IPSS (Instant Programme Search System) lets you skip up to 16 selections forward or backward from anywhere on the tape. And the spot erase feature uses a

microprocessor for easily and precisely erasing sections from tapes. The linear time counter is interlocked with the transport mechanism during recording and playback as well as fast forwarding and rewinding.

Available in Two Models

Operationally similar in every detail, the GX-75 MKII lacks the wooden side panels of the 95 MKII. Also, the GX-95 MKII uses a copper-plated bottom cover for improved resistance to distortion-causing vibration and electromagnetic interference, as well as insulating feet made of a ceramic composite for superior isolation.



GX-75MKII

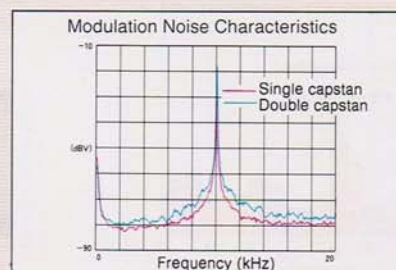
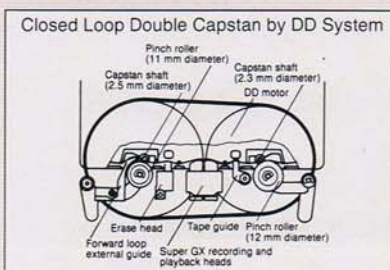
Reference Master

Closed Loop Double Capstan System by Direct Drive

In this sophisticated system, two pairs of capstans and pinch rollers isolate the tape near the heads. This stabilizes tape tension and speed at the point of head contact, regardless of irregularities in the reels. A direct drive system uses an FG servo motor to turn the capstan to maintain stable tape tension at all times. The capstans are processed with Akai's Inverse Current Hard Chrome finish for extra durability and running

precision. The result of all these improvements is optimum head contact, highly accurate tape

transport, and a minimum of the modulation noise that can cause distortion.



Stereo Cassette Deck

Cassette decks designed for playback performance.



GX-67

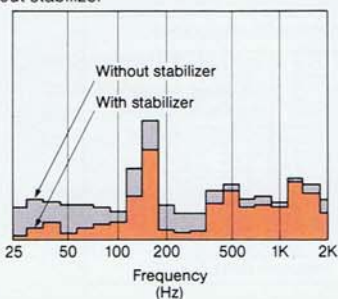
Stereo Cassette Deck

With the GX-67, Akai offers high-end cassette performance at a mid-range price. All the elements that discriminating audiophiles look for in faithful recording and playback have been thoughtfully combined to maximize listening pleasure and recording accuracy.

The Centre of Any Great Deck...

Begin with the Super GX 3-head system. Built around a crystal ferrite head core, the materials and design represent a perfect balance between outstanding durability, precise current focus and superb, neutral recording bias characteristics. Like other high-end Akai decks, the head is supported with wear-resistant glass for greater protection, and dedicated recording and playback head gaps optimize performance. Wiring in the head is Linear Crystal Oxygen-Free Copper for minimal distortion and super electrical linearity. The result is exceptional a record/playback head with unparalleled recording accuracy, frequency response, and extended dynamic range, virtually without azimuth loss.

Comparison of cassette performance with and without stabilizer



Rock Solid Drive Mechanisms

The drive mechanism is also designed and manufactured to maximize accuracy and dependability while minimizing electrical and mechanical distortion. The closed loop double-capstan system improves on conventional designs by differentiating capstan shaft diameters to avoid resonance and modulation noise. Furthermore, the shell of the cassette itself is stabilized with Akai's special sorbothane damping material to absorb cassette vibrations and minimize noise.

Precise Calibration in Two Ranges

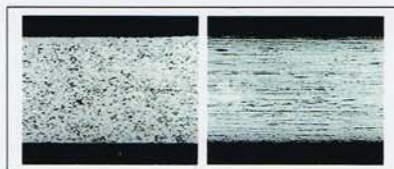
The GX-67 employs Akai's exclusive calibration oscillation circuit to permit precise recording level adjustment for low (400 Hz) and high (10 kHz) frequency ranges, and shows the calibrating ranges simultaneously on the peak level meter.

Dolby B and C noise reduction are included for clean, noise-free recording and playback. Also on the GX-67 is Dolby HX PRO, which momentarily lowers the bias setting when it monitors a high-frequency peak that might cause distortion and unacceptable noise. Also included is a selectable MPX filter which greatly reduces drifting and fading noise when recording

direct from an FM radio source.

A convenient feature on the GX-67 is the auto tape monitor system, which automatically switches between source and tape during recording sessions. Although it can be manually overridden, this eliminates the need to switch between tape monitor during recording and source during playback.

Other features include a real-time/tape remaining counter which interlocks the digital counter with the transport mechanism for high precision monitoring. This counter can even estimate remaining tape time when you select the tape length. The auto tape selector adjusts the deck for normal or CrO₂ tape, and an auto play function permits scheduled start-ups. Finally, the standard remote control unit makes all these features accessible from the comfort of your chair.



Ordinary copper crystal structure

LC-OFC crystal structure



Vibration-absorbing Sorbothane cassette stabilizer



GX-65MKII

Stereo Cassette Deck

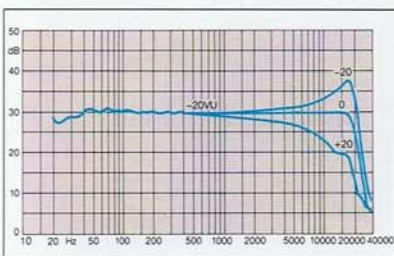
A cassette deck that offers the finest in home stereo sound, with outstanding sound reproduction and recording qualities enhanced by a wide range of functions.

Akai's Finest Head System

The Crystal Ferrite Head Core of the Super GX 3-Head system combines ideal recording bias characteristics and superb current focussing with exceptional durability. A support system fashioned from wear-resistant glass provides further protection. Separate recording and playback head gaps guarantee optimal performance. Linear Crystal Oxygen-Free Copper wiring minimizes distortion in the signal and provides highly efficient electrical linearity. All these advantages combine to produce record/playback heads boasting ultra-accurate recording, exceptionally wide frequency response and extended dynamic range with virtually no azimuth loss.

Solid Construction Reduces Noise

The cassette shell is cradled in a special damping material which absorbs the vibrations that can muddy the sound.



Bias control frequency characteristics

Closed loop double capstans maintain constant torque and optimize head-to-tape contact. Maximum fidelity is further guaranteed by the DC construction of the recording equalizer amp, playback equalizer amp and headphone amps.

Dolby B is provided for compatibility with tapes recorded under that standard, and a Dolby C makes even higher noise reduction possible in your own recordings. The Dolby HX PRO feature automatically reduces bias levels momentarily to compensate for high frequency peaks and allow for more headroom. This system improves recording saturation levels, so even normal tapes attain high frequency signal levels that approach those of CrO₂ and metal tape. And an MPX filter is included for noise-free recording from FM radio sources.

Full bias Adjustment

For further fine-tuning of recording response, the bias adjust function gives plus or minus 20% adjustment from the Normal, CrO₂ and Metal positions. This not only achieves perfect flatness for virtually all tapes on the market, it also makes it

possible to experiment with sound and improve recording/playback quality.

A convenient auto tape monitor system eliminates the need for manual switching between source and tape during recording or playback. When recording is started, the cassette deck automatically switches from the source position to the tape monitor position, and vice versa. Of course, manual selection is possible at any time.

Other features include a digital tape counter, auto play, memory stop/start that lets you stop or start the tape at a preset counter setting, auto tape select, and a wireless remote control unit.



The Bias Adjust control on the front panel.

Stereo Cassette Deck



DX-57

Stereo Cassette Deck

The DX-57 offers affordable 3-head engineering with enough features to make it a valuable addition to any quality, all-around home high fidelity system. Every important element necessary for precise recording and playback are included in this solid, compact unit.

3-head Design for Superior Fidelity

The permalloy 3-head design offers durability and accurate current focus for neutral recording and playback. Dedicated recording and playback head gaps optimize performance and provide exceptional record/playback quality with unparalleled recording accuracy, frequency response, and extended dynamic range. And, of course, by maintaining separate head gaps, azimuth loss is all but eliminated.

An extremely precise drive mechanism utilizes Akai transport technology to ensure accurate and dependable operation and minimize distortion. The closed loop double-capstan system uses different capstan shaft

diameters to avoid resonance and modulation noise. Allows greater accuracy with minimal wow and flutter.

Dolby NR for the Cleanest Sound

Dolby HX PRO momentarily lowers the bias setting when it monitors a high-frequency peak that might cause distortion and unacceptable noise. It then automatically returns to the correct bias for optimal recording. Also included are Dolby B and C noise reduction to virtually eliminate noises and hiss to provide clean, clear recording and playback. Also on the DX-57 is a selectable MPX filter which greatly reduces drift and fade when recording direct from an FM radio source.

Convenient CD Recording

When recording from compact discs, a CD Synchro REC Start switches the tape deck from pause to record when the disc play is activated*. The convenient auto tape monitor system featured on the DX-57

eliminates the need to switch between tape monitor and source during recording and playback. Also useful is the Instant Programme Search System (IPSS), with which you can skip any number of tracks in either forward or reverse to access the song you want.

*Note: With CD-57/CD-37/CD-27

Other Features

Also included on the DX-57 is a real-time counter which interlocks the digital counter with the transport mechanism for high precision monitoring. The auto tape selector adjusts the deck for normal or CrO₂ or METAL tape, and there's an auto play function for timed start-ups.

A gold-plated headphone jack with volume control allows you to connect directly to the deck to bypass the circuitry of the rest of the system. Since it's gold-plated, a perfect, corrosion-resistant connection is assured. And you can use the wireless remote control to access all these features from your chair.

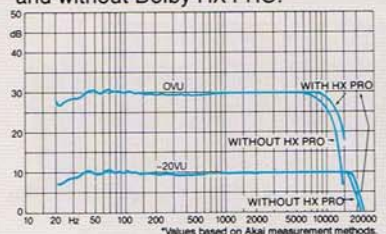
Dolby HX PRO

This system allows lowered bias levels which result in more headroom for high-frequency recording. During recording, the Dolby HX PRO monitors the recording signal. When high frequency peaks are detected, bias is reduced to accommodate them. When those peaks are no

longer present, bias is restored to the normal level.

This system improves recording saturation levels, so even normal tapes attain high-frequency signal levels that approach those of CrO₂ and metal tape performance.

Frequency response comparison with and without Dolby HX PRO.



GX-W45

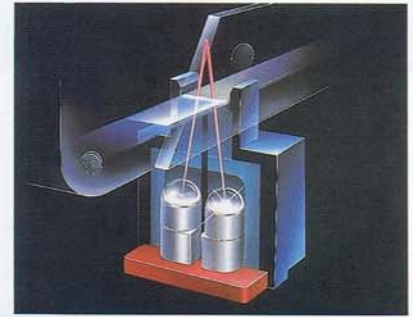
Stereo Double Cassette Deck



The GX-W45 double-cassette deck was designed for music lovers who listen to their cassettes at home, using personal stereos, and in the car.

Both drives feature Twin Field Super GX heads with independent gaps for recording and playback.

This dual-reverse double-cassette deck offers virtually uninterrupted recording and playback of both sides of two cassettes. The Bi-directional Symmetrical Precision (BSP) mechanism ensures that sound quality achieves the identical high standards in both forward and reverse directions.



The infrared detectors that spot the end of the tape for instant reverse.

The identical configurations of both drives make the GX-W45 ideal for tape-to-tape dubbing. And the unique Character Mode control custom tailors the recordings for your listening environment. When recording for listening pleasure outside the home, it compensates for car- and personal-stereo acoustic limitations at the source.

Features include Dolby HX PRO (Tapes I and II) and Dolby B and C noise reduction, real-time and double-speed dubbing, Instant Programme Search System (IPSS), auto tape selection, and a wireless remote control.

GX-R35

Stereo Cassette Deck



Akai's technical expertise gives you the benefits of both auto reverse and identical drives in a competitively priced dual tape deck.

The Bi-directional Symmetrical Precision (BSP) mechanism ensures that sound quality achieves the identical high standards in both forward and reverse directions.



Computer Recording Level Processing (CRLP) uses a microprocessor to set the maximum possible recording level for the type of tape being used, the characteristics of the programme source, the presence or absence of noise reduction, and the tape's maximum output level (MOL).

The GX-35R's sorbothane cassette stabilizer prevents the muddying of the sound that is caused by cassette-shell vibration.

Other features include Twin Field Super GX Heads for optimum recording and playback, recording bias adjustment, DC amps for ideal response to digital programme sources, direct CD/DAT inputs, Dolby HX PRO and Dolby B and C noise reduction, auto tape selector, IPSS for item selection skipping of up to 15 intermediate tracks, and full wireless remote control.

GX-32

Stereo Cassette Deck

A deck that demonstrates Akai's commitment to quality across the cassette deck range. Full-bodied performance and a host of attractive features put the GX-32 far in front of any other deck in its class. For example, the Twin Field Super GX heads have independent gaps for playback and recording to give optimum quality for both.

The linear Crystal Oxygen-Free Copper wiring minimizes distortion and provides highly efficient electrical linearity. Variable recording bias allows fine tuning of the response with different types of cassette tape, and Dolby B and C noise reduction are provided for pre-recorded and home-recorded tapes.

Tape transport control is coordinated by a sophisticated microprocessor that protects precious tapes from excess tension and spillage. For unimpaired recordings from FM, there is a multiplex filter that gets rid of annoying interference.

Other features include Instant Programme Locating System (IPLS), Auto Play System, auto mute, large FL display and peak level meters, elegant aluminum front panel and large, and vibration damping feet.





Reference Master

CD-73

CD Player

Akai has approached the design and construction of the CD-73 with the same, simple guidelines it applies to all its Reference Master components: Anything less than the absolute best simply will not do. With that rule in mind, Akai engineers created a compact disc player that could easily act as the benchmark for the entire industry—the incomparable CD-73.

Acoustic Perfection from Mechanical Integrity

To achieve the CD-73's exceptional sound quality, all unwanted vibrations had to be eliminated. The highly rigid chassis that forms the bottom and sides of the CD-73 shuts out external vibrations as well as any that might be generated internally by the disc motor or power transformer. Extra strength is supplied by a large vertical clamp that suppresses any remaining extraneous vibration.



Opto-coupler and independent L/R D/A converters



Large vertical clamp

The optical pickup, which must accurately track the tiny pits that carry the digital data, uses a precision linear motor with sophisticated servo circuits to maintain perfect tracking and to move quickly to each new track as it is commanded.

Electronic Design Features

Electromagnetic distortion and interference between adjacent circuit blocks is avoided by sophisticated internal design features. Signal integrity is assured by independent transformers and separate power supplies to the digital and analog sections. Innovative double-sided shielding boards protect against stray digital pulses.

One side also acts as a ground, the complete defence against digital noise. Conversion from digital to analog is through independent left- and right-channel glitchless D/A (digital to analog) converters, and optical couplings in each channel transfer the signal with unimpaired purity. This advanced technology permits an exceptionally wide dynamic range while improving phase accuracy and lowering distortion in the higher frequencies.



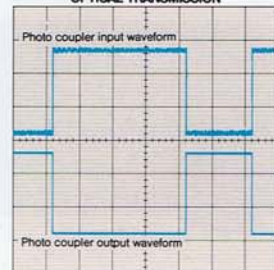
Digital output terminal

Oversampling and Filtering

Every nuance of the original performance is attained by oversampling digital filters that assure superior phase and distortion characteristics. In addition to conventional analog output sockets, optical and coaxial digital outputs are also available, making it possible to transmit the digital signal direct to amplifiers with their own digital inputs, avoiding the noise that affects analog transmission.

For total listening pleasure, the 10-key wireless remote control gives instant access to all modes. There's programme control for up to 20 tracks, repeat, skip forward and backward and more. And all the operating information is displayed on the large fluorescent display.

DIGITAL NOISE REDUCTION THROUGH D/A OPTICAL TRANSMISSION



nishing potential of

CD-57 CD Player



The CD-57 uses an advanced interpolative dual D/A converter which combines the advantages of a conventional segment-type converter with those of one-bit converters. To maintain the purity of the signal on the

way to the amplifier, optical and coaxial digital outputs allow digital signals to be sent direct to digital amplifiers.

Auto programme edit calculates the number of tracks that can be dubbed to any given tape length. Peak Level Search, which automatically searches for the highest signal peaks on a CD, makes it quick and easy to set accurate recording levels. Convenient features like 32-track programmed or random play, Skip and index search; Repeat (programme, entire disc, or from point A to point B) make it easy to find exactly the programme you're looking for. The 20-programme calendar, remote control, and 8 cm disc compatibility make the CD-57 a simple pleasure to use.



CD-37 CD Player



Shares the same interpolative dual D/A converter as the CD-57 for crystal clear, distortion free signal purity. And the optical digital signal output allows transmission to the amplifier over fibre optic cable, which is

immune to electromagnetic interference and signal degradation.

Built into the brushed, anodized aluminum front panel is a large, multi-function fluorescent display which shows in detail all the functions of the CD-37, including its 20-programme music calendar. Those other functions include an auto programme edit function that calculates how many of the indicated tracks can be recorded onto a specified cassette, and ensures that no song is broken at the end of the tape. Also, an auto space function inserts five seconds of blank space between all songs as they are recorded onto tape.

Also includes random and programme play functions, tape synchro recording start, and a wireless remote control.



CD-27 CD Player



Similar in many respects to the CD-37, this model was designed specifically as part of the Pro Series of full-size components, but is now available on an individual basis. Like the 37, the CD-27 uses an interpolative dual

D/A converter for unsurpassed clarity and signal purity. The signal is output to the amplifier using fibre optic cable to further reduce the harmful effects of electromagnetic interference.

All functions are shown in the large, multi-function fluorescent display, including a 20-programme music calendar. There is also an auto programme edit function for calculating the maximum number of indicated tracks that can be recorded onto a specified cassette. The auto space function inserts five seconds of blank space between all songs as they are recorded onto tape.

Includes random and programme play functions, tape synchro recording start, and a wireless remote control.



Note: The products on these two pages are available only in 220 V AC models.



AM-95

Reference Master

AM-95/75 Digital Integrated Amplifier

The Reference Master marque on the faceplates of the AM-95 and AM-75 integrated amplifiers signifies that, like other members of the Reference Master family, they represent the absolute pinnacle of home audio design and function.

Sophisticated Power for Discriminating Listeners

Although rated at a generous 180 watts/channel, the AM-95 is not driven by brute power. With a design that is at once sophisticated yet rugged, it houses cutting-edge technical innovations such as the newly-developed Multi-Stage Noise Shaping digital-to-analog converter. Unlike conventional D/A converters, the analog signal is restored by transforming the digital data into a pulse-width modulation signal of 11 different widths, which totally precludes zero-cross distortion and does away with sample-and-hold circuits and high order analog filters. Linearity is improved, even at minute signal levels, and digital data tolerance distortion, amplifier distortion, and phase distortion are all reduced.

Other examples of the AM-95's advanced technology is its Digital Noise Reducing Construction with dual PLL circuits. An active PLL circuit turns on to synchronize the incoming digital source signal. When this synchronization is achieved, the active PLL turns off, and another high-precision PLL eliminates jitter (fluctuations along the time axis) in the output. As a further precaution against digital noise, advanced circuitry turns off the active PLL circuitry when no digital input is present.

The solution is isolation

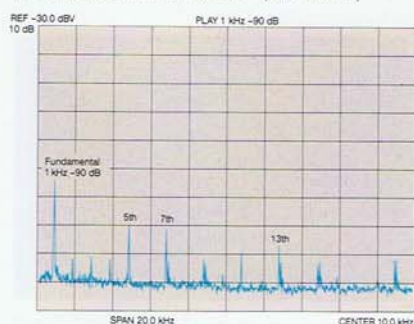
A newly developed active muting system constantly checks for the presence of any input signal, and mutes the final analog stage when none is present. The D/A converter circuitry is enclosed in a separate case, floated from the amplifier chassis, to provide a dual shield that both cuts out external noise and suppresses noise-leakage from the D/A converter itself. To eliminate any possibility of digital noise leaking into the analog sections through the power supply, the AM-95 utilizes totally separate power supplies for the digital and analog sections, with a reference current for the rectifier circuits generated by LEDs to provide a constant flow of current with extremely low noise. The massive proportions of the base and casing, in combination with effective shielding, also contributes to the AM-95's superior sound quality. As a final precaution, all circuits are grounded at a single point, preventing interference between the PCBs.

The Perfect Power Supply

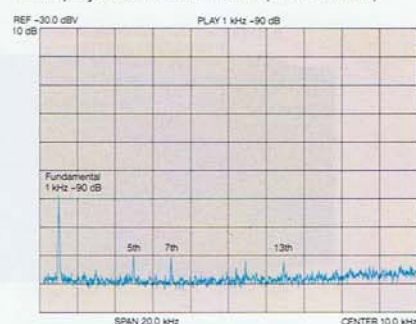
The Super Active Power Supply increases by about three times the interval in which the power supply rectifier diodes pass current to the capacitors. This lowers power supply impedance and provides current regulation superior even to that of Class A amplifiers. Simple, completely symmetrical parallel in/single push-pull design eliminates high frequency distortion and provides high power to handle the dynamic range of digital sources. The power supply features a low impedance, low leakage toroidal transformer with a 'floating' configuration to suppress vibration.

Different components are all physically separated as much as possible to eliminate interference, and the circuit boards of the current amp and voltage amp are also completely isolated to stop spurious interactions between them. Operation is flawless, enhanced by features like Direct Operation, which allows you to route any sound sources directly to the power

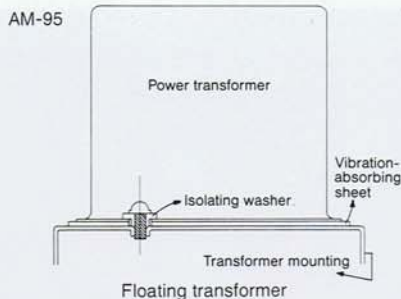
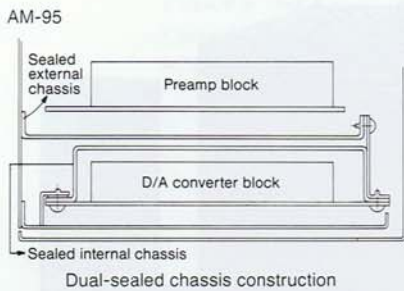
Comparison of signal composition during low level playback. DIGITAL AMP (8FS 18BIT)



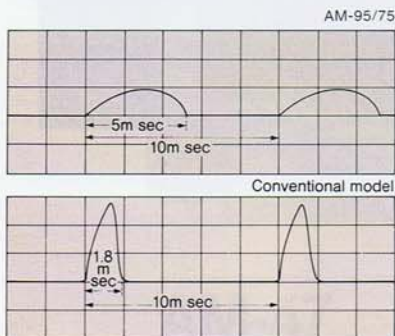
Comparison of signal composition during low level playback. DIGITAL AMP (PWM MASH)



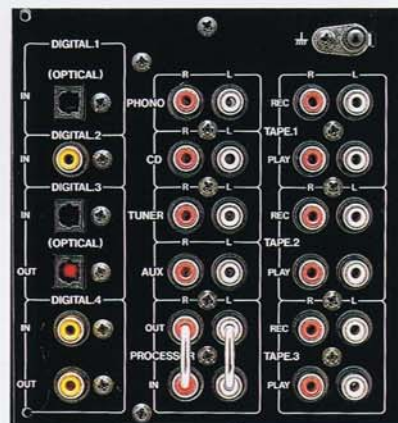
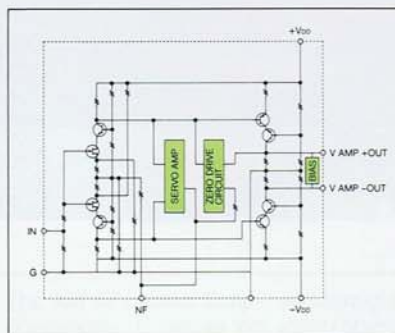
or utmost fidelity wer.



ON TIME CHARACTERISTICS OF SUPER ACTIVE SUPPLY RECTIFIER DIODE



COMPLETELY SYMMETRICAL STRUCTURE VOLTAGE AMP (CASCADE CONNECTION)



amplifier block, bypassing the preamp circuitry. Naturally, the AM-95 handles all standard sampling frequencies, including 48 kHz (DBS/DAT), 44.1 kHz (CD), and 32 kHz (DBS/DAT). The AM-95 is also fully compatible with MM and MC type cartridges.

Digital Connectivity

To take full advantage of digital sources, the AM-95 has four digital inputs, two coaxial and two optical, and two digital outputs, one coaxial and one optical, allowing connection via optical fibre cable to advanced digital equipment. Since coaxial cable is shielded and grounded, and optical transmissions are impervious to electromagnetic interference, both methods offer completely noise-free connection. As the final link in the chain, all terminals are gold-plated for perfect conductivity and corrosion resistance.

For Demanding Listeners Like You

When you combine all these features, the product is something that says much for your demanding standards and your musical priorities. The Reference Master Series AM-95 was designed for audiophiles who are not interested in compromise when it comes to their music. So whatever your taste in music, the purity of the AM-95's sound and technology will add new dimensions of realism to your listening.

AM-75 Digital Integrated Amplifier

A close relative to the AM-95, the AM-75 shares most of the remarkable technical specifications of its big brother, including the Multi-Stage Noise Shaping digital-to-analog converter. Also shared is the Digital Noise Reducing Construction with dual PLL circuits and the active muting system.

In fact, the only real difference between the two is the AM-75's output power of 150 watts/channel, as opposed to the AM-95's 180 watts. Otherwise, the same rugged construction and powerful, feature-packed design that is common to all of Akai's Reference Master Series components are present in the AM-75, making it an amplifier anyone would be proud to own.



Reference Master

Digital Integrated Amplifier



AM-67

Digital Integrated Amplifier

Specifically designed for digital sound, with its own D/A converter (DAC), the AM-67 demonstrates state-of-the-art techniques for maximizing power while virtually eliminating sources of noise interference.

Advanced Interpolative DAC

Accepting both two coaxial (electrical) and one fibre (optical) digital inputs, the advanced DAC automatically adjusts to the different sampling frequencies of CDs, DATs or the new broadcast satellite (BS) standards.

Low signal levels — the delicate nuances that create musical atmosphere — are handled by a one-bit DAC, and are therefore inherently free of zero-cross distortion. High level signals — the thrilling crescendos that make CD listening so exciting — are handled by a multi-bit DAC with superb linearity. The combination is literally unbeatable at all levels!

This unusual design also incorporated Digital Noise Reducing for reduced noise at low signal levels, giving a cleaner, clearer sound.

Eight-times oversampling digital filters reduce the burden on the analog filters, lowering phase distortion in the all-important high frequencies that determine the stereo image.

And accurate digital deemphasis replaces cruder analog circuits. The final touch of excellence? Jitter-free operation, eliminating the noisy "spikes" that can affect playback with less advanced DACs.

The Cleanest Possible Power And Plenty of It!

You might need an advanced degree in electronic engineering to understand all the sophisticated circuitry, techniques and components that contribute to the exceptional sound equality of the AM-67.

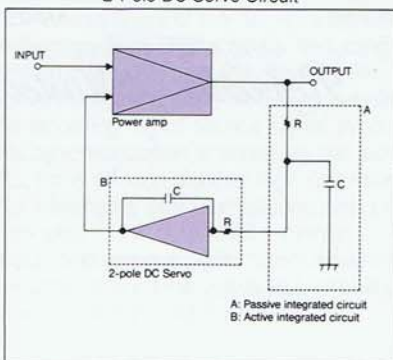
But you only need to hear it to recognise the difference they make!

With 200Watts/channel (4Ω, DIN), there's the power to spare for the full amazing dynamic range of the latest CDs.

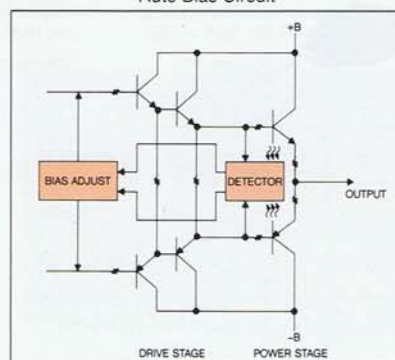
Complete Digital/Analog Separation

The complex ultrahigh-speed calculations of the digital section can generate noise that seriously degrades audio performance. In the AM-67, power supplies for the digital and analog sections are kept completely separate to prevent interference. A total of no less than 23 separate stabilizers ensure, clean stable power with no interference. The DAC board is shielded, and circuit boards above the main amplifier section are mounted vertically to minimize distortion induced by electro-magnetic fields. Non-adjustable auto bias circuitry prevents bias current fluctuations following power-on and during high output.

2-Pole DC Servo Circuit



Auto Bias Circuit



Stereo Integrated Amplifier

AM-57

Stereo Integrated Amplifier



Applying the same spirit of advanced technology found in the AM-67 to analog sound, the AM-57 dual pole servo amplifier offers a still-substantial 170 watts/channel into 4 ohms.

'Simple and Straight' Construction

The AM-57 features Akai's 'Simple and Straight' construction to minimize the circuitry that the signal must pass through

for the most faithful reproduction of the original. And to minimize distortion caused by vibration and electromagnetic interference, high rigidity construction guarantees an amplifier that is solid and rugged enough to eliminate potential sources of noise. The auto (non-adjustable) bias circuit prevents bias current fluctuations following power-on and during high output



Pure Sound from Source to Speaker

A source direct switch completely bypasses the amplifier's tonal controls to deliver a pure signal directly to the speakers or headphones. Seven inputs and six outputs (three tapes, two speakers and one headphone) provide enough flexibility for any configuration, and a REC selector makes switching between source and recorder simple and immediate.

A wireless remote control switches sources and operates the motor-driven volume control.

AM-47

Stereo Integrated Amplifier

The AM-47 utilizes 'Simple and Straight' construction to deliver 120 watts/channel (at 4 ohms) of the cleanest possible analog signal to your speakers. All aspects of the electronic and mechanical design were optimized to create the shortest, straightest path from your source to your ears, and to minimize the opportunity for distortion to infect the signal.

To that end, the AM-47 includes a Source Direct switch that bypasses most of the circuitry in the amplifier and sends the signal directly to output (when the direct operation is not selected, it is replaced with a subsonic filter to clean up 'dirty' sources).

Versatile Configuration and Recording

The convenient Rec Selector feature allows you to record from one source to another, while listening to something else. Up to seven inputs and six outputs (three tapes, two speakers and headphones) permits almost unlimited system configurations.

No matter how loud you drive your speakers, the massive construction and large pedestal will make sure that the vibrations do not feed back into your circuitry.



AM-37

Stereo Integrated Amplifier

Simple and straight construction in the AM-37 keeps the signal path as simple as possible and the number of connection points to an absolute minimum. The Direct Operation switch routes the signal directly to

the power amplifier circuits, avoiding unnecessary circuitry. Vertical orientation keeps the circuit boards from being exposed to magnetic flux from the main transformer.

The AM-37 pushes 90 watts/channel through three tape, two speaker, and one headphone outputs that delivers sound of tremendous clarity. Large pedestal feet and sturdy construction soak up externally generated vibrations, helping to preserve the dynamic clarity of the sound. The REC selector lets you tape from one source while listening to another.



Note: The products on these two pages are available only in 220 V AC models.



AT-93

AT-93 Quartz Synthesizer Tuner

At the forefront of high quality, high fidelity radio reception, Akai's Reference Master AT-93 utilizes cutting edge technology to ensure outstanding reception under all atmospheric conditions.

Quartz microprocessor tuning locks onto incoming signals with unerring accuracy, automatically selecting one of two antenna settings (narrow or wide IF bandwidth) and Hi-Cut bandwidth if necessary. Depending on signal strength, the low-loss jointless antenna selector, which uses pin diodes rather than the traditional relay type, may even blend left and right signals to synthesize a noiseless signal.

Advanced electronic technologies

Front end microprocessor control is bolstered by high voltage twin-variable capacitor diodes in all tuning stages, and high capability dual-gate MOS FETs in both the RF and mixer stages. An advanced linear phase IF filter increases stereo separation and reduces distortion in the signal. Loss of sound quality in the demodulation phase is prevented by a highly efficient, low-noise schottky barrier diode.

Eliminates noise and distortion

The MPX system replaces traditional amp/capacitor sequencing. In both the preamp and post-amplifier sections, all coupling capacitors from the demodulation stage right through to audio output are eliminated by the open loop DC servo amplifier, resulting in clear, clean sound almost undistinguishable from the original broadcast signal. Muting circuitry employing a reed-relayed mute in place of transistors and RETs removes annoying noise between channels.

Dual power supplies enhance signal

Unlike most tuners which use a single power supply, the AT-93 has separate supplies for the high frequency front end circuitry and the audio section, with IF

sections to prevent crosstalk and distortion. The power supply is further refined by low noise Zener diodes to assure constant voltage generation. Stable current to the Zener diodes is provided by FETs, and an oversized transformer is also used to achieve the fullest dynamic range possible.

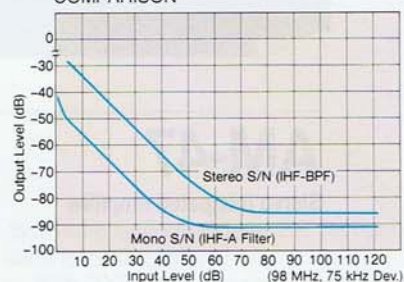
Convenient features include a 20-station random preset memory to simplify finding your favorite stations. A preset scanning function lets you explore the wavebands for the right programming. Sequential station call allows reception of up to three stations in order with a timer. And the record calibration system ensures proper adjustment for optimum reception quality.

AT-57 Quartz Synthesizer Tuner

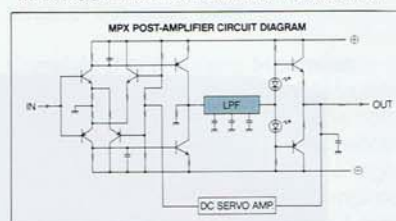
High-precision quartz synthesizer tuning. The heavy duty chassis employs vibration-damping construction and superior components throughout to produce superior sound by minimizing distortion.

Features include random presets of up to 30 stations. Station memory back-up, scanning and A/B antennas. The Auto Hi-Blend feature uses both stereo signals to synthesize a coherent signal in the event of weak reception. FM reception can be switched between Auto and Mono modes, and wide/narrow IF band can be activated. Signal quality is displayed on an array of five LEDs to aid in tuning. The large pedestal and sturdy construction prevent vibrations

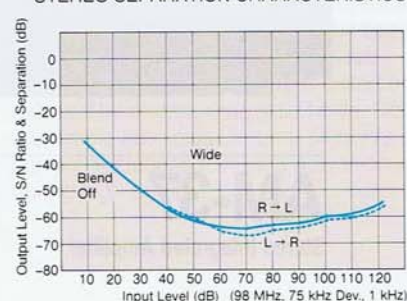
ANTENNA INPUT LEVEL/NOISE LEVEL COMPARISON



MPX POST-AMPLIFIER CIRCUIT DIAGRAM



STEREO SEPARATION CHARACTERISTICS



from adversely affecting reception. A remote sensor allows it to be operated with an Akai amplifier remote control



AT-57

Note: Both products on this page are available only in 220 V AC models.

Stereo Radio Cassette Recorder Headphone Player

Potent portables!

AJ-W311CD

CD Stereo Radio Cassette Recorder

High quality, crystal clear CD sound and convenient dual tape deck features you can take anywhere. The AJ-W311CD seamlessly integrates these with a 3-band tuner, the rich sound of Akai's Super Bass system and enough power to make it as good a home system as a portable.

Portable digital quality

Take the clarity and convenience of compact discs with you for unequalled sound anywhere. The built-in CD player handles both 8 cm and 12 cm discs without an adapter. It includes a full complement of convenient features including programme skip and scanning, random play, and repeat. And you can programme the playing order for up to 20 tracks.

The Convenience of Dual Tape Decks

Whether at home or not, now you have all the listening and recording convenience of dual tape decks. The AJ-W311CD allows sequential play from its twin uni-directional decks for uninterrupted listening, as well as synchro dubbing from deck I to deck II, or record straight from the CD or tuner.

Rich bass and midrange clarity

Akai's Super Bass system boosts response and presence in the low frequency ranges for unbelievably powerful, realistic sound quality. These highly efficient speakers deliver the most from the 3 watt/channel amplifier for enough clean, low distortion power to let the AJ-W311CD serve as a superb home stereo.

All this is enclosed in a sleek, beautifully designed one-piece unit for Akai-quality sound anywhere you want it.



AJ-W311CD

COMPACT
disc
DIGITAL AUDIO

AJ-301CD

CD Stereo Radio Cassette Recorder

Like the 311, the AJ-301CD combines the uncompromising sound quality of compact discs with the convenience of cassettes, the variety of a 3-band tuner, and the audio impact of a speaker system with Super Bass sound in one compact, stylish package.

Great Sound from CDs...

Enjoy awesome CD sound from either 8 cm or 12 cm discs, with an array of features that includes up/down skip, repeat, and a 20-track random programme memory.

...and from Tapes

The AJ-301CD includes a single uni-directional tape deck with auto-stop function that allows you to record from CD, tuner.

The 3-band tuner locks in even distant stations for the variety of radio without noise and distortion.

Deep Super Bass sound

The speaker system with Super Bass sound provides a quality and depth of sound that is remarkable for such a compact design. And the entire package is as durable and rugged as it is attractive.

Designed for either home or portable use, the 301 operates on 220 V AC without an adapter, or from 6 batteries for hours of listening enjoyment away from home. All together, it's a great way to get Akai sound and quality anywhere you want to take it.



AJ-301CD

COMPACT
disc
DIGITAL AUDIO

Stereo Radio Cassette Recorder Headphone Player



PJ-W59

Stereo Cassette Receiver Recorder

PJ-W59

Tired of portable stereos that compromise? Think of the PJ-W59 as a complete home stereo with a handle. Now portability doesn't mean compromising the expansive sound and comprehensive features you expect from a complete home stereo. It's all here.

The 4-band tuner is designed for pinpoint tuning accuracy of your favourite radio stations. A 5 watts x 2 amplifier (capable of 60 watt peaks) with built-in 5-band graphic equalizer gives you not only the power you need for any kind of music, but the ability to shape it for optimum sound quality.

The double cassette deck is packed with outstanding features such as one-touch high-speed tape-to-tape dubbing, sequential play from tape I to tape II for extended listening, and synchro-start in dubbing mode.

Superlative Sound Quality

The 2-way speakers house 125 mm woofers and 20 mm tweeters to deliver dramatic sound with commanding bass and clear, crisp highs, and are detachable for optimum sound and positioning.

Other features include microphone input and mixing and AC/DC power for indoor/outdoor use. CD/Aux connectors let you connect other components for true home-stereo flexibility.

All these features are combined into a perfectly balanced system that is just right either in the home or on the road.



AJ-W259

AJ-W279

Stereo Radio Cassette Recorder

The flowing curves of the AJ-W279 attract their share of attention and hold a host of features that make it easy to operate and a joy to listen to.

Hands-off Performance

A convenient built-in timer allows hands-off timer recording, automatic timer playback and sleep timer playback/recording. A high-performance 4-band digital synthesizer tuner (3-band tuner in some areas) selectively brings in each station for great radio reception. A 20-station preset function and lock-on Auto Tuning permit one-touch setting.

The double cassette deck includes metal/CrO₂ tape compatibility and auto stop, and is perfect for normal- or high-speed dubbing and editing with its synchro dubbing feature.

Complete Sound Command

Separate bass and treble tone controls and the multi-function display give you complete command over the sound and all the functions. The whole system is rounded out with a two-way speaker system powered by a 24 watt PMPO amp (2 watts x 2 rated power output) for full sound with a taut, well defined bass.

AJ-W259

Stereo Radio Cassette Recorder

Like the AJ-W279, the beautiful design of the AJ-W259 makes it a unique, handsome system packed with convenient features and excellent audio performance.

Smooth Curves and a Big Sound

The 2-way speakers built into the AJ-W259 are driven by a 2 watt x 2 amplifier capable of 24 watt peaks—more than enough to reproduce demanding peaks and sustained crescendos. Separate bass and treble controls allow you to shape that sound to fit your tastes and your mood.

Easy-to-use, Sophisticated Features

The double cassette deck is metal/CrO₂ tape compatible, and includes auto stop, normal- or high-speed dubbing, and a synchro dubbing feature.



AJ-W279

AJ-R219/209

Stereo Radio Cassette Recorders



AJ-R219



AJ-209

Straightforward design and portable convenience are part of the appeal of these classic single-deck radio cassette recorders. Their sturdy construction and standard features make them an exceptional value, and perfect for using at work, on outings, or by students. Take them anywhere!

AJ-R219

This unit features a single auto reverse cassette deck for hands-off operation and continuous listening pleasure. The 4-band tuner (three bands in some areas) gives you unlimited radio access, Record from the radio or the built-in condenser microphone.

The AJ-R219's 2-way speaker system can output up to 18 watts of peak music power (1.6 watts x 2 rated power output) to cope with demanding musical passages. And the independent independent bass and treble controls let you tailor the sound to fit your taste as well as your surroundings.

Tape deck features include automatic recording level control, one-touch recording and auto-stop.

AJ-209

A uni-directional tape deck is at the centre of the AJ-209, which, like the R219, features a built-in condenser mic, automatic level, one-touch recording and auto-stop. Although equipped with a more modest 1.4 watts x 2 of rated power, it can generate an impressive 14 watts when your music demands it. A single tone control and 2-way speakers deliver crisp, clean sound.

PD-X81

Portable CD Player

Akai brings the unsurpassed sound quality and convenience of compact discs to a portable. Packed with features normally found on component CD players, the PD-X81 is perfect for carry-around listening or as part of a home stereo system.

Big System Features

The PD-X81's sleek design and compact size (only 35 mm high!) contain surprising features you wouldn't expect in a personal stereo. Features like a 20-track random programme memory. Intro-scan, which plays the first few seconds of each song before moving on to the next, so you can

choose the tracks you want to hear, even if you don't know where they fall in the play order. And repeat play allows continuous play of one disc for as long as you like.

At Home or Outside

For improved listening pleasure and to compensate for the acoustic characteristics of open-air headphones, the Super Bass system boosts the lower frequencies for remarkable presence and realism, even when used with in-ear phones.

At home, the PD-X81 converts easily and perfectly into a component CD player for your stereo. Simply plug in the AC adapter/charger provided and connect the line out jack to your system's amplifier, and you have all the features you need in a package small enough to fit anywhere. Rechargeable batteries are also provided.



PM-R9/R8

Auto Reverse Headphone Player

These two lightweight personal stereo tape decks can be slipped into a pocket or bag for Akai sound that plays anywhere. Auto reverse extends your listening pleasure, and the built-in 4-band graphic equalizer lets you shape the sound to fit your tastes and music. Super Bass is fuller, richer than you would expect from a personal stereo. All this in a low-profile design that's only 33 mm thin!

If radio is part of your plans, the PM-R9's 2-band tuner keeps you in touch with your favourite radio stations, too.

Both models include rechargeable batteries and an AC adapter/charger system that allows you to operate off house current and saves on expensive battery replacement. And both can be switched between normal and metal/CrO₂ tapes for optimum tonal balance and minimum tape noise.



PM-R9

PM-R8

TUNERS

MODEL	AT-93/L	AT-57/L
Presets	20 (random)	30 (random)
Antenna	A/B	A/B
FM SECTION		
Tuning frequency range	87.5MHz to 108.0MHz	87.5MHz to 108.0MHz
Usable sensitivity	11.2dBf	11.2dBf
Selectivity		
Narrow	90dB	80dB
Wide	60dB	65dB
T.H.D.		
Narrow	0.08% (mono)/0.3% (stereo)	0.15% (mono)/0.2% (stereo)
Wide	0.02% (mono)/0.07% (stereo)	0.08% (mono)/0.15% (stereo)
Frequency response	30Hz to 15kHz \pm 0.5dB	30Hz to 15kHz \pm 1dB
AM (MW) SECTION		
Tuning frequency range	531kHz to 1,602kHz	531kHz to 1,602kHz
Usable sensitivity	300 μ V/m	400 μ V/m
S/N	45dB	40dB
T.H.D.	0.6%	1.8%
LW SECTION		
Tuning frequency range	144kHz to 351kHz	144kHz to 351kHz
Usable sensitivity	300 μ V/m	800 μ V/m
S/N	40dB	35dB
T.H.D.	0.6%	1.8%
Power requirements	220V, 50Hz	220 to 230V, 50Hz
Dimensions (W x H x D)	461 x 87 x 344mm	425 x 96 x 335mm
Weight	6.3kg	3.6kg

TURNTABLES

MODEL	AP-M70 (for AC-M50 only)	AP-M393 (for AC-M393/L only)	AP-305-C (Pro System)
Motor	DC servo	DC servo	DC servo
Cartridge	MM type	MM type	VM type
Wow & flutter (WRMS)	0.2%	0.15%	0.09%
Rumble	More than 50dB	More than 50dB	More than 50dB
Tone-arm	Static-balanced straight type	Dynamic-balanced straight type	Static-balanced straight type
Dimensions (W x H x D)	350 x 98 x 350mm	350 x 94 x 345mm	425 x 105 x 345mm
Weight	2.2kg	2.5kg	3.1kg

SPEAKER SYSTEMS

MODEL	SW-MX100	SW-MX90	SW-M70	SW-M393
System	3-way 3-speaker system	2-way 2-speaker system	3-way 3-speaker system	3-way 3-speaker system
Speaker units	165mm P.P. cone type woofer 60mm cone type midrange 20mm dome type tweeter	165mm cone type woofer 60mm cone type tweeter	165mm cone type woofer 60mm cone type midrange 20mm dome type tweeter	160mm cone type woofer 57mm cone type midrange 57mm cone type tweeter
Rated impedance	8 Ω	8 Ω	8 Ω	8 Ω
Max. input power	50W	50W	50W	80W
Sensitivity	More than 88dB/W/m	More than 89dB/W/m	More than 89dB/W/m	More than 87dB/W
Frequency range	55Hz to 23kHz	60Hz to 20kHz	55Hz to 23kHz	55Hz to 23kHz
Enclosure	Bass reflex type	Bass reflex type	Bass reflex type	Closed type
Dimensions (W x H x D)	189 x 377 x 215mm	189 x 377 x 215mm	232 x 420 x 167mm	220 x 442 x 170mm
Weight	4.5kg x 2	3.5kg x 2	4kg x 2	4.1kg x 2

CD PORTABLES

MODEL	AJ-W311CD	AJ-301CD
Max. power output		
Peak	36W	24W
Rated	3W x 2	2W x 2
Tone control/Graphic EQ	High cut	High cut
Tuner	FM/MW/LW or FM/MW/SW	FM/MW/LW or FM/MW/SW
Cassette deck		
Deck 1	Unidirectional	Unidirectional
Deck 2	Unidirectional	—
High speed dubbing	Yes	—
Sequential play	Yes	—
S/N (record/playback)	40dB	40dB
Distortion (record/playback)	5%	5%
Wow & flutter	0.2%	0.2%
Speaker unit	100mm	100mm
CD		
Random programme	20 tracks	20 tracks
Power supply	AC/DC	AC/DC
Dimensions (W x H x D)	550 x 187 x 196mm	550 x 187 x 196mm
Weight	4.2kg	3.9kg

PORTABLE CD PLAYER

MODEL	PD-X81
Pickup system	3-beam laser pickup
Sampling frequency	44.1kHz
Digital filter	16-bit, 2-times oversampling
D/A converter	16-bit linear
Frequency response	20Hz to 20kHz
Dynamic range	90dB or more
S/N	90dB or more
T.H.D.	0.07% or less
Wow & flutter	Less than measurable limits
Dimensions (W x H x D)	133 x 35 x 146mm
Weight	370g

PRO SYSTEM

AMPLIFIER	MODEL	AM-27	AM-17
	Power output	60W x 2 (8 Ω , 1kHz, 1% T.H.D.)	35W x 2 (8 Ω , 1kHz, 1% T.H.D.)
	T.H.D.	0.05%	0.05%
	Frequency response	20Hz to 20kHz \pm 0.5dB	20Hz to 20kHz \pm 0.5dB
	Tone control		
	Bass	\pm 10dB (100Hz)	\pm 10dB (100Hz)
	Treble	\pm 10dB (10kHz)	\pm 10dB (10kHz)
	Input sensitivity/Impedance		
	Phono MM	2.5mV/47k Ω	2.5mV/47k Ω
	Tuner/CD/Tape	150mV/47k Ω	150mV/47k Ω
	S/N		
	Phono MM	70dB	70dB
	Tuner/CD/Tape	90dB	90dB
	Crosstalk		
	Phono	60dB (1kHz, 5.0mV input level)	60dB (1kHz, 5.0mV input level)
	CD	60dB (1kHz, 500mV input level)	60dB (1kHz, 500mV input level)
	Power requirements	220 to 230V, 50Hz	220 to 230V, 50Hz
	Dimensions (W x H x D)	425 x 135 x 285mm	425 x 135 x 285mm
	Weight	6.4kg	6.1kg
STEREO DOUBLE CASSETTE DECK	MODEL	HX-27W	
	Head configuration		
	Deck I	Hard permalloy for playback x 1	
	Deck II	Hard permalloy for recording and playback x 1	
		Erase head x 1	
	Motors	DC motor x 2	
	Wow & flutter	0.20% DIN	
	Frequency response (metal tape)	40Hz to 14kHz \pm 3dB	
	S/N (metal tape)	53dB	
	T.H.D.	1.5%	
	Input sensitivity/Impedance (Line)	80mV/47k Ω	
	Output sensitivity (Line)	500mV	
	Dimensions (W x H x D)	425 x 135 x 275mm	
	Weight	3.5kg	
QUARTZ SYNTHESIZER TUNER	MODEL	AT-27/L	
	Presets	20 (random)	
	FM section		
	Tuning frequency range	87.5MHz to 108.0MHz	
	Usable sensitivity	11.2dBf	
	Selectivity	60dB	
	S/N (IHF mono)	72dB	
	Frequency response	30Hz to 15kHz +2dB/-3dB	
	AM (MW) section		
	Tuning frequency range	531kHz to 1.602kHz	
	Usable sensitivity	500 μ Vm	
	Selectivity	23dB	
	S/N	40dB	
	LW section		
	Tuning frequency range	144kHz to 351kHz	
	Usable sensitivity	800 μ Vm	
	Selectivity	23dB	
	S/N	32dB	
	Power requirements	220 to 230V, 50Hz	
	Dimensions (W x H x D)	425 x 79 x 280mm	
	Weight	2.3kg	
CD PLAYER	MODEL	CD-27	
	Pickup system	3-beam laser pickup	
	Sampling frequency	44.1kHz	
	Digital filter	18-bit, 8-times oversampling	
	D/A converter	Interpolative one-bit dual	
	Frequency response	2Hz to 20kHz \pm 0.5dB	
	Dynamic range	97dB (1kHz)	
	S/N	108dB	
	T.H.D.	0.0035%	
	Wow & flutter	Less than measurable limits	
	Dimensions (W x H x D)	425 x 120 x 351mm	
	Weight	4.4kg	
GRAPHIC EQUALIZER	MODEL	EA-27	
	Number of bands	10 bands x 2	
	Center frequencies	31Hz/62Hz/125Hz/250Hz/500Hz/1kHz/2kHz/4kHz/8kHz/16kHz	
	Control range	\pm 8dB	
	Frequency response	20Hz to 20kHz \pm 1dB	
	S/N	100dB	
	Power requirements	220 to 230V, 50Hz	
	Dimensions (W x H x D)	425 x 79 x 266mm	
	Weight	2.2kg	

Specifications

SYSTEM M830/M, M630/M, M430/M

AMPLIFIER	AM-M830	AM-M630	AM-M430
Power output			
RMS 10% THD	80W x 2	65W x 2	45W x 2
DIN, 6Ω	63W x 2	50W x 2	35W x 2
Music power	Total 300W	Total 220W	Total 170W
Peak music power output	Total 900W	Total 750W	Total 600W
Frequency response	10Hz to 100kHz	10Hz to 100kHz	10Hz to 100kHz
Input sensitivity			
CD (optical)	-22dBm	-22dBm	-22dBm
Phono	3mV/47kΩ	3mV/47kΩ	1.8mV/47kΩ
VCR/AUX	270mV/47kΩ	180mV/47kΩ	90mV/47kΩ
Digital 1, 2	0.25Vp-p/75Ω	0.25Vp-p/75Ω	—
Output sensitivity			
VCR/AUX	270mV/1kΩ	180mV/1kΩ	90mV/1kΩ
Digital 1	0.5Vp-p/75Ω	—	—
Dimensions (W x H x D)	360 x 117 x 315mm	360 x 117 x 315mm	360 x 236 x 315mm
Weight	6.4kg	6.3kg	7.7kg
CASSETTE DECK	HX-M630W	HX-M630W	AX-M430
Frequency response			
Normal	30Hz to 14kHz	30Hz to 14kHz	30Hz to 14kHz
CrO ₂	30Hz to 15kHz	30Hz to 15kHz	30Hz to 15kHz
Metal	30Hz to 15kHz	—	—
Wow & flutter (WRMS/DIN)			
Tape 1	0.06%/0.14%	0.09%/0.18%	0.09%/0.18%
Tape 2	0.06%/0.14%	0.06%/0.14%	0.06%/0.14%
Dimensions (W x H x D)	360 x 117 x 295mm	360 x 117 x 295mm	360 x 236 x 315mm
Weight	3.2kg	2.9kg	7.7kg
TUNER	AT-M630/L	AT-M630/L	AT-M430/L
Tuning range			
FM	87.5MHz to 108MHz	87.5MHz to 108MHz	87.5MHz to 108MHz
MW	531kHz to 1,602kHz	531kHz to 1,602kHz	531kHz to 1,602kHz
MW (U/T model only)	530kHz to 1700kHz	530kHz to 1700kHz	530kHz to 1700kHz
LW (L model only)	144kHz to 351kHz	144kHz to 351kHz	144kHz to 351kHz
Usable sensitivity			
FM	13.2dBf	13.2dBf	13.2dBf
FM (Germany, Italy)	18.2dBf	18.2dBf	18.2dBf
MW	400μV/m	400μV/m	400μV/m
LW (L model only)	800μV/m	800μV/m	800μV/m
Timer	Quartz lock daily timer	Quartz lock daily timer	Quartz lock daily timer
Dimensions (W x H x D)	360 x 95 x 305mm	360 x 95 x 305mm	360 x 95 x 305mm
Weight	1.9kg	1.9kg	1.9kg
CD PLAYER	CD-M630	CD-M630	CD-M630
Output signal	-22dBm optical signal	-22dBm optical signal	-22dBm optical signal
Dimensions (W x H x D)	360 x 95 x 295mm	360 x 95 x 295mm	360 x 95 x 295mm
Weight	2.6kg	2.6kg	2.6kg
OPTIONS			
CD AUTO CHANGER	CD-M830M	CD-M830M	CD-M830M
Output signal	-22dBm optical signal	-22dBm optical signal	-22dBm optical signal
Dimensions (W x H x D)	360 x 117 x 315mm	360 x 117 x 315mm	360 x 117 x 315mm
Weight	3.8kg	3.8kg	3.8kg
TURNTABLE	AP-M630	AP-M630	AP-M630
Drive system	Belt drive	Belt drive	Belt drive
Wow & flutter (WRMS)	0.12%	0.12%	0.12%
Output level	2.5mV	2.5mV	2.5mV
Cartridge	MM	MM	MM
Dimensions (W x H x D)	360 x 97 x 345mm	360 x 97 x 345mm	360 x 97 x 345mm
Weight	2.9kg	2.9kg	2.9kg
DIGITAL SOUND PROCESSOR	EA-M830	EA-M830	AX-M430
Center frequency (Hz)	63/160/400/1k/2.5k/6.3k/16k	63/160/400/1k/2.5k/6.3k/16k	63/250/1k/4k/16k
Control range	±10dB	±10dB	±8dB
Dimensions (W x H x D)	360 x 95 x 300mm	360 x 95 x 300mm	Combined with amp

CD PLAYERS

MODEL	CD-73	CD-M70 (for AC-M50 only)	CD-57	CD-37	CD-27
Pickup system	3-beam laser pickup	3-beam laser pickup	3-beam laser pickup	3-beam laser pickup	3-beam laser pickup
Sampling frequency	44.1kHz	44.1kHz	44.1kHz	44.1kHz	44.1kHz
Digital filter	18-bit, 4-times oversampling	16-bit, 2-times oversampling	18-bit, 8-times oversampling	18-bit, 8-times oversampling	18-bit, 8-times oversampling
D/A converter	16-bit linear	16-bit linear	Interpolative one-bit dual	Interpolative one-bit dual	Interpolative one-bit dual
Frequency response	5Hz to 20kHz ±0.3dB	20Hz to 20kHz ±2.5dB	2Hz to 20kHz ±0.5dB	2Hz to 20kHz ±0.5dB	2Hz to 20kHz ±0.5dB
Dynamic range	97dB or more	92dB or more	97dB (1kHz)	97dB (1kHz)	97dB (1kHz)
S/N	106dB or more	90dB or more	108dB	108dB	108dB
T.H.D.	0.0025% or less	0.07% or less	0.0028%	0.0035%	0.0035%
Wow & flutter	Less than measurable limits	Less than measurable limits	Less than measurable limits	Less than measurable limits	Less than measurable limits
Dimensions (W x H x D)	460 x 112 x 330mm	350 x 86 x 273mm	425 x 120 x 349mm	425 x 120 x 349mm	425 x 120 x 351mm
Weight	7.5kg	2.7kg	4.6kg	4.6kg	4.4kg

TUNER-AMP-DECK SYSTEMS

MODEL	AC-MX100	AC-MX90	AC-M50	AC-M393
System Mini/Midi	Mini	Mini	Midi	Midi
AMP SECTION				
Power output				
RMS 10% T.H.D.	30W x 2 (8 Ω)	25W x 2 (8 Ω)	30W x 2 (8 Ω)	30W x 2 (8 Ω)
Peak music power output	Total 500W	Total 440W	Total 500W	—
Graphic equalizer	Preset EQ w/ 6 positions Classic/BGM/Vocal/Pops/Jazz/EQ-OFF	Preset EQ w/ 6 positions Classic/BGM/Vocal/Pops/Jazz/EQ-OFF	7-band, \pm 6dB	5-band, \pm 10dB
CASSETTE DECK SECTION				
Mechanism	Double	Double	Double	Double
Frequency response	100Hz to 10kHz	100Hz to 10kHz	100Hz to 10kHz	100Hz to 10kHz
S/N	55dB	55dB	55dB	50dB
Wow & flutter	0.2%	0.2%	0.2%	0.25%
FM TUNER SECTION				
Usable sensitivity	10 μ V/m	10 μ V/m	10 μ V/m	2.5 μ V/m
S/N (mono/stereo)	55dB/50dB	55dB/50dB	55dB/50dB	56dB/50dB
Stereo separation (1kHz)	30dB	30dB	30dB	35dB
CD SECTION				
Random program	Yes (20 tracks)	Yes (20 tracks)	—	—
Skip/Index search	Yes	Yes	—	Skip search only
Dimensions (W x H x D)	265 x 377 x 266mm	265 x 377 x 235mm	350 x 290 x 273mm	350 x 325 x 335mm
Weight	13.7kg	10kg	8.5kg	11.8kg

CASSETTE DECKS

MODEL	GX-95MKII	GX-75MKII	GX-65MKII	GX-67
Head configuration	Super GX discrete 3-head	Super GX discrete 3-head	Super GX 3-head	Super GX 3-head
Motors				
Capstan	FG servo direct drive	FG servo direct drive	Electronically controlled DC	Electronically controlled DC
Reel	DC motor	DC motor	DC motor	DC motor
Eject/Loading	DC motor	DC motor	—	DC motor
Wow & flutter (WRMS/DIN)	0.025%/0.04%	0.025%/0.04%	0.035%/0.06%	0.045%/0.08%
Frequency response (metal tape)	15Hz to 22kHz \pm 3dB	15Hz to 22kHz \pm 3dB	15Hz to 21kHz \pm 3dB	15Hz to 21kHz \pm 3dB
S/N (metal tape)	59dB	59dB	57dB	57dB
T.H.D.	0.6%	0.6%	0.7%	1.0%
Input sensitivity/Impedance				
Line	70mV/47k Ω	70mV/47k Ω	70mV/47k Ω	70mV/47k Ω
Output level/Impedance				
Line	388mV/2k Ω	388mV/2k Ω	388mV/2k Ω	388mV/2k Ω
Headphones	1.3mW/8 Ω	1.3mW/8 Ω	1.3mW/8 Ω	1.3mW/8 Ω
Dimensions (W x H x D)	460 x 155 x 350mm	425 x 154 x 350mm	425 x 137 x 353mm	425 x 135 x 351mm
Weight	10.2kg	9.2kg	5.5kg	5.4kg

MODEL	DX-57	GX-W45	GX-R35	GX-32
Head configuration				
Deck 1	Hard permalloy 3-head	Twin-field Super GX	Twin-field Super GX	Twin-field Super GX
Deck 2	—	Twin-field Super GX	—	—
Motors				
Capstan	Electronically controlled DC	Electronically controlled DC	Electronically controlled DC	Electronically controlled DC
Reel	DC motor	—	DC motor	DC motor
Wow & flutter (WRMS/DIN)	0.045%/0.08%	0.08%/0.13%	0.045%/0.07%	0.05%/0.09%
Frequency response (metal tape)	15Hz to 20kHz \pm 3dB	25Hz to 17kHz \pm 3dB	25Hz to 18kHz \pm 3dB	25Hz to 20kHz \pm 3dB
S/N (metal tape)	57dB	56dB	56dB	59dB
T.H.D.	1.0%	1.0%	1.0%	Less than 0.9%
Input sensitivity/Impedance				
Line	70mV/47k Ω	70mV/47k Ω	70mV/47k Ω	70mV/47k Ω
Output level/Impedance				
Line	388mV/2k Ω	388mV/2k Ω	388mV/2k Ω	388mV/2k Ω
Headphones	1.3mW/8 Ω	1.3mW/8 Ω	1.3mW/8 Ω	1.3mW/8 Ω
Dimensions (W x H x D)	425 x 135 x 351mm	425 x 137 x 353mm	425 x 137 x 353mm	425 x 112 x 352mm
Weight	5.3kg	6.0kg	5.5kg	5.4kg

Specifications

AMPLIFIERS

MODEL	AM-95	AM-75	AM-67
Power output	180W x 2 (4Ω, 20Hz to 20kHz, 0.1% T.H.D.)	100W x 2 (4Ω, 20Hz to 20kHz, 0.1% T.H.D.)	110W x 2 (8Ω, 20Hz to 20kHz, 0.05% T.H.D.)
T.H.D.	0.008% (1kHz, 8Ω)	0.008% (1kHz, 8Ω)	0.005% (1kHz, 8Ω)
Frequency response	3Hz to 100kHz (+0dB, -3dB)	3Hz to 100kHz (+0dB, -3dB)	5Hz to 100kHz (+0dB, -3dB)
Tone control			
Bass	±10dB (100Hz)	±10dB (100Hz)	±8dB (100Hz)
Treble	±10dB (10kHz)	±10dB (10kHz)	±8dB (10kHz)
Input sensitivity/Impedance			
Phono MM	2.5mV/47kΩ	2.5mV/47kΩ	2.0mV/47kΩ
Tuner/CD/Tape	150mV/47kΩ	150mV/47kΩ	150mV/47kΩ
S/N			
Phono MM	85dB	85dB	86dB
Tuner/CD/Tape	100dB	100dB	102dB
Subsonic filter	—	—	10Hz (-12dB/oct)
Channel separation	60dB	60dB	75dB (1kHz)/55dB (10kHz)
Power requirements	220 to 230V, 50Hz	220 to 230V, 50Hz	220 to 230V, 50Hz
Dimensions (W x H x D)	461 x 177 x 452mm	461 x 177 x 452mm	425 x 177 x 401mm
Weight	20.0kg	17.7kg	14.8kg
DIGITAL FEATURES			
D/A converter	MASH (Multi-stage Noise Shaping) type	MASH (Multi-stage Noise Shaping) type	Interpolative one-bit dual
Sampling frequencies	32kHz/44.1kHz/48kHz	32kHz/44.1kHz/48kHz	32kHz/44.1kHz/48kHz
Digital input level			
Coaxial	0.5V p-p/75Ω	0.5V p-p/75Ω	0.5V p-p/75Ω
Optical	-14dBm to -23dBm	-14dBm to -23dBm	-14dBm to -23dBm
Dynamic range	95dB	95dB	96dB
T.H.D.	0.003%	0.003%	0.002%

MODEL	AM-57	AM-47	AM-37
Power output	100W x 2 (8Ω, 20Hz to 20kHz, 0.05% T.H.D.)	80W x 2 (8Ω, 20Hz to 20kHz, 0.05% T.H.D.)	60W x 2 (8Ω, 20Hz to 20kHz, 0.05% T.H.D.)
T.H.D.	0.005% (1kHz, 8Ω)	0.005% (1kHz, 8Ω)	0.005% (1kHz, 8Ω)
Frequency response	5Hz to 100kHz (+0dB, -3dB)	5Hz to 100kHz (+0dB, -3dB)	5Hz to 100kHz (+0dB, -3dB)
Tone control			
Bass	±8dB (100Hz)	±8dB (100Hz)	±8dB (100Hz)
Treble	±8dB (10kHz)	±8dB (10kHz)	±8dB (10kHz)
Input sensitivity/Impedance			
Phono MM	2.0mV/47kΩ	2.5mV/47kΩ	2.5mV/47kΩ
Tuner/CD/Tape	150mV/47kΩ	150mV/47kΩ	150mV/47kΩ
S/N			
Phono MM	86dB	85dB	84dB
Tuner/CD/Tape	102dB	101dB	100dB
Subsonic filter	10Hz (-12dB/oct)	16Hz (-12dB/oct)	16Hz (-12dB/oct)
Channel separation	75dB (1kHz)/55dB (10kHz)	60dB (1kHz)/50dB (10kHz)	60dB (1kHz)/50dB (10kHz)
Crosstalk			
Phono	75dB (1kHz, 5.0mV input level)	70dB (1kHz, 5.0mV input level)	70dB (1kHz, 5.0mV input level)
Tuner/CD/Tape	85dB (1kHz, 500mV input level)	75dB (1kHz, 500mV input level)	75dB (1kHz, 500mV input level)
Power requirements	220 to 230V, 50Hz	220 to 230V, 50Hz	220 to 230V, 50Hz
Dimensions (W x H x D)	425 x 177 x 401mm	425 x 156 x 370mm	425 x 156 x 370mm
Weight	13.3kg	10.5kg	9.9kg

PORTABLES

MODEL	PJ-W59	AJ-W279/AJ-W259	AJ-R219	AJ-209	PM-R9	PM-R8
Max. power output						
Peak	60W	24W	18W	14W	—	—
Rated	5W x 2	2W x 2	1.6W x 2	1.4W x 2	35mW x 2	35mW x 2
Tone control/Graphic EQ	5-band	Bass/Treble	Bass/Treble	High cut	4-band	4-band
Tuner	FM/MW/SW1/SW2	FM/MW/SW1/SW2 or FM/MW/LW	FM/MW/SW1/SW2 or FM/MW/LW	FM/MW/SW1/SW2 or FM/MW/LW	FM/AM	—
Cassette deck						
Deck 1	Unidirectional	Unidirectional	Auto-reverse	Unidirectional	Auto-reverse	Auto-reverse
Deck 2	Unidirectional	Unidirectional	—	—	—	—
High-speed dubbing	Yes	Yes	—	—	—	—
Sequential play	Yes	Yes	—	—	—	—
S/N (tape playback)	45dB	45dB	45dB	45dB	48dB	48dB
Distortion (tape playback)	1%	2%	2%	2%	1%	1%
Wow & flutter	0.2%	0.25%	0.25%	0.25%	0.25%	0.25%
Speaker unit	125mm piezo	100mm piezo	77mm piezo	77mm piezo	—	—
Power supply	AC/DC	AC/DC	AC/DC	AC/DC	AC/DC Rechargeable battery	AC/DC Rechargeable battery
Dimensions (W x H x D)	600 x 254 x 150mm	560 x 147 x 165mm	410 x 125 x 107mm	410 x 125 x 107mm	126 x 83 x 33mm	126 x 83 x 33mm
Weight	5.0kg	3.0kg	1.9kg	1.8kg	300g	300g

AKAI ELECTRIC CO., LTD.

12-14, Higashi-Kojiya 2-chome, Ohta-ku,
TOKYO 144, JAPAN