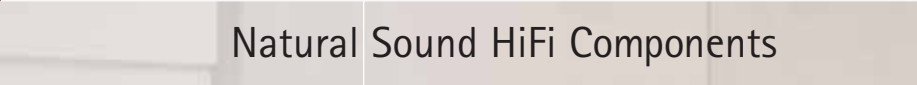


Yamaha  
Digital Home Theatre Components

Natural Sound HiFi Components

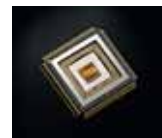


# Image and Sound Quality Worthy of the Name "Home Theatre."



## Dedicated to the Creation of Fine Sound for Over a Century.

Yamaha's involvement with sound began with the production of our first reed organ in 1887. Shortly thereafter, we began making pianos and other instruments, and today we are the world's largest producer of musical instruments. We also operate a worldwide music school, design concert halls and produce innovative electronic instruments. Our audio components have long been recognized as the standard bearers of fine quality, and with the development of Digital Sound Field Processing in 1986, we opened a new era in home entertainment. All of our acoustic and audio expertise is now engineered into LSIs that we design and manufacture ourselves, and these powerful chips are expanding and enhancing entertainment possibilities in the exciting new field of home theatre. Recently, we've also introduced state-of-the-art video components, and now offer everything necessary for the finest in music and movie enjoyment at home.



## C O N T E N T S

3	Technology
8	Digital Sound Projectors
10	MusicCAST
12	Visual Products
14	Digital Home Theatre Components
20	DVD Players / DVD Recorder
22	Digital Home Theatre Packages
24	HTiB (Home Theatre in a Box)
25	CinemaStation
26	PianoCraft
28	Digital Home Theatre Speakers / Subwoofers
32	Natural Sound HiFi Components
35	Specifications

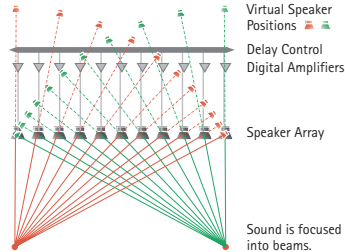
# Digital Sound Projector™ Technology

## Digital Sound Projector™ Technology

The YSP components apply sophisticated Digital Sound Projector™ Technology to precisely control the orientation of the sound by focusing it into beams. The centre channel sound is heard directly, while sounds from other channels are heard after reflecting off walls. The result is true multi-channel surround sound that sounds just like a multi-speaker system – but without the need for extra speakers!



(YSP-1000)



Multiple channels (two channels in the figure) are superimposed to create the sound. In a 5.1-channel configuration, the beam speakers together create the sound of 5.1 superimposed channels.

## IntelliBeam Automated Calibration System (YSP-1000 and YSP-800)

This Yamaha exclusive feature ensures optimum multi-channel sound reproduction with accurate image location. By monitoring and analyzing the sound with the microphone included with the YSP-1000 and YSP-800, IntelliBeam automatically sets the best beam angles and modes, while optimizing the level and frequency response of each beam. This makes initial setup both extremely simple

### IntelliBeam



Sound is projected at the listener from five directions: straight ahead, reflected off one wall, and reflected off two walls (so it is heard from the rear).

while acoustically perfect. Manual setup is also possible.

## Best Sound in Every Situation with 5 Beam Modes (YSP-1000 and YSP-800)

Five different beam modes can be selected via the remote control. Five Beam mode provides true multi-channel surround sound. Stereo mode reproduces the effect of a two-speaker system. Stereo + Three Beam mode and Three Beam mode surround effects are also available, plus a Target mode that focuses the sound in one direction. This could be used, for example, when the mother wants to watch TV diagonally from the kitchen.

## CINEMA DSP with Dolby Digital and DTS (YSP-1000 and YSP-800)

Yamaha's ultra-sophisticated CINEMA DSP technology creates thrillingly realistic



soundscapes in your room. CINEMA DSP programmes (YSP-1000: 7; YSP-800: 3) are available.

The YSP-1000 and YSP-800 are compatible with Dolby Digital, DTS, Dolby Pro Logic II and DTS Neo:6 sound formats.

## CINEMA DSP Programme Buttons



MOVIE

MUSIC

SPORTS

## Two Volume Modes: Night Listening Enhancer and TV Equal Volume (YSP-1000 and YSP-800)

During low-volume listening, such as late at night, dynamic range suffers and you may miss some sounds. The Night Listening Enhancer offers two settings, Cinema and Music, with three-level selectability, which will ensure that you don't miss movie dialogue or quiet passages, or lose overall surround spaciousness. There is also a TV Equal Volume mode to prevent sudden bursts of loud sound such as from commercials.

## Custom Installation Compatibility: Remote In, IR Out and RS-232C Interface (YSP-1000)

The YSP-1000 supports IR pass through for the convenient operation of other components. The YSP-1000 can be controlled by an IR signal sent through the Remote In terminal. The IR signal received by the Remote Control Sensor on the front panel is directly output through the remote out terminal. It is also provided with an RS-232C interface for a touch-panel controller.

## Video Input Selection (YSP-1000)

Video input can be selected from any of two component inputs to a component output, or from three composite inputs to a composite output.

## IntelliBeam Automated Calibration System



Left: Each sound beam is precisely directed. Centre: Total sound beam effect is optimized. Right: Sound is monitored and analyzed, after which frequency response and other parameters are optimized for the room.

## 5 Beam Modes



5-Beam Mode

Stereo Mode

3-Beam Mode

Stereo + 3-Beam Mode

Target Mode



# Visual Product Technology

## DPX-1300: Advanced technologies deliver extraordinary performance.

### "Natural Black" Concept

How a video system reproduces black and all its gradations is what determines contrast, and generally makes the difference between an image that is merely good and one that is sharp and richly detailed at every level of brightness. In quest of superior contrast performance, Yamaha developed the Natural Black concept, whereby various technologies, parts and functions combine to achieve truer, deeper levels of black than those of conventional home cinema projectors.



Black reproduction by DPX-1300 and conventional projectors.



Yamaha Natural Black makes subtle degrees of black in textures, shadows stand out more clearly.

With other projectors, black contrast may be soft and fuzzy rather than sharp and clear.

### New 10-Bit Video Signal Processing

Designed for discerning home cinema fans, the DPX-1300 utilizes 10-bit video signal processing from A/D conversion all the way through to DMD™ output. In addition, the newest HQV technology from Silicon Optix Inc. has been adopted to enable programmable per-pixel processing. Plus, at high-definition TV resolution, high-level de-interlacing processing (1080i to 1080p) is performed at the pixel level. Complex cadences are handled with ease, not only with 3:2 pull-down, but also with broadcast film and animation programming, for smooth, stable de-interlacing. Other remarkable technologies include highly detailed scaling processing, jaggy line reduction for HD sources. To further improve DVD or SD TV picture quality, powerful Digital Video Noise Reduction minimizes mosquito noise and block noise. An exclusive Overshoot Suppressor is more natural outlines in images.



### 720p DarkChip3™ Engine

This DLP chip is Texas Instruments' most advanced Digital Micro Mirror Device. As the name implies, it provides deeper blacks, while improving contrast in dark areas.



### High Resolution Lens

Yamaha has gone beyond the capabilities of other projectors with the use of a new high resolution lens that maintains resolution sensitivity to the

edge of the lens. Four anomalous dispersion glass components, result in half the chromatic aberration while maintaining a short focal point and high zoom magnification.

### Seven-Segment Colour Wheel

The DPX-1300 incorporates a seven-segment colour wheel, with an ND filter-equipped green segment, resulting in excellent colour reproduction.



### Natural Colour Adjustment System

The DPX-1300 features a colour balance adjustment menu that enables higher precision adjustment with easier operation, with three colour adjustment modes.

### HDMI and DVI Terminals for Versatile Interfacing



In order to connect the DPX-1300 to any component which outputs a digital video signal, it is equipped with both HDMI and DVI terminals. This also enables it to handle a variety of other data as well, such as component type, aspect ratio and colorimetry, which can be adjusted.

### DPX-530: "Natural Black" and superior functions for enjoying widescreen movies.

#### 4,000:1 Contrast Ratio and Brightness of 1,500 ANSI Lumens

The DPX-530 utilizes DLP™ and other advanced technologies to deliver superior overall projection performance. In addition to having a wide-panel DMD™, with a mirror angle of ±12°, the optical engine features a high-detail all-glass lens. The prism shape and lens arrangement have been precisely designed and a special coating reduces the light reflection that can affect contrast performance. As a result, contrast is an amazing 4,000:1 and small details that would ordinarily be obscured by black areas are visible. In addition, the highest level of brightness in its class (1,500 ANSI lumens) lets you enjoy clear images in ordinary living room lighting.

#### Motorised Iris Control for Higher Contrast

The DPX-530 utilises motorised Optical Iris Control. Optimising the shape of the iris contributes to the high contrast performance and helps to increase the depth of field.

#### Low Light Leakage

The chassis is designed to block light leakage from the front, where stray light is more likely to affect picture quality.



#### 4,000-Hour Lamp Life

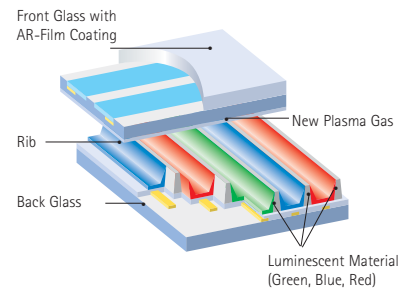
The lamp has a long service life of approximately 4,000 hours (lamp Cinema mode), thanks to an improved temperature control system.

## PDM-4220: Incredibly smooth, high-definition image quality.

### Advanced ALIS Method Panel

The PDM-4220 uses the latest Advanced ALIS Method panel to deliver extraordinarily high image clarity for a truly enjoyable viewing experience. With this panel, the pixels are defined electronically rather than physically, allowing each picture element to be smaller than normal. This creates a higher pixel count for a smoother, seamless picture, even with fast-moving images. Advanced ALIS Method uses several new technologies, including a powerful digital image pixel processor, a Dynamic Multi-Bandpass colour filter and an AR (Anti-Reflection) film coating for stunningly beautiful images with high-definition sources.

### Advanced ALIS Method Panel



### Digital Linear Colour Control

Digital Linear Colour Control maintains the proper balance between the three main colours for optimum colour reproduction in every type of scene. The sharpness and tint of each colour are independently controlled, for more precise adjustment. Greens and blues are extremely vivid, while difficult tints, such as skin colours and the gradients in sunsets are more natural, and moving colours as in smoke, are clearly rendered.

### Long Life of 60,000 Hours

Another benefit of the Advanced ALIS Method is lower power consumption and longer panel life. The PDM-4220 will provide high quality images for 60,000 hours,\* about twice as long as a typical CRT monitor.

\* Until panel brightness reduced to 40%. Yamaha measurement.

### HDTV Capability

The PDM-4220 is HD-ready, meaning that 1080i high definition images can be displayed line for line without vertical scaling. The 1,024 x 1,024 resolution provides a completely clean HDTV picture, with no noise at the edges. Other signals, such as 720p HDTV signals and conventional broadcasts, are converted up to 1080 progressive lines by a 1080p processor, for much higher image quality than conventional displays. An HDMI input terminal accepts digital signals for maximum video quality.

# Home Theatre Technology

## ● High Sound Quality

### Digital ToP-ART and High Current Amplification

The Digital ToP-ART design concept combines the latest and best technologies, parts and circuit designs to maximize sound quality. High Current Amplification uses superior quality components from input to output to achieve high current power with low impedance. Also, Yamaha has completely re-evaluated all parts, choosing only the finest audio-grade parts and devices, such as Burr-Brown 192 kHz/24-bit DACs and re-designed power supply circuits for massive power and superlative sound quality. In addition, the amplifiers are assignable for bi-amp connections.

### Symmetrical Power Amplifier Circuitry (DSP-Z9)

The High Current Amplification uses a symmetrical, full push-pull circuit configuration with a complementary FET input stage. This ensures balanced output with no signal interference and highest slew rate (rate at which signal changes; affects high frequency response). Furthermore, the massive toroidal transformer and large capacity block electrolytic capacitors (28,000µF) ensure a consistently stable power supply.

### High Grade Construction with Independent Chambers and Anti-Vibration Design (DSP-Z9)

The DSP-Z9 uses a heavy-duty, rigid chassis construction with separate individual chambers for left and right power amplifiers, power supply and control section to prevent any chance of

**DIGITAL  
TOP-ART**

Total Party  
Audio Reproduction Technology

interference. This thick chassis has electromagnetic shielding. The extremely large aluminium-extruded heat sinks have anti-resonance characteristics and ensure effective heat dissipation. Yamaha's ToP-ART base and feet provide stability and further vibration-damping. The other receivers use many of these same design features.

### Only the Finest Parts are Used

At this degree of extreme sound quality, each and every part in the receiver makes a difference. Yamaha technicians tested, selected and in many cases custom-designed all parts, and then tested them in groups to ensure that they sounded good together.

## ● Digital Data Handling

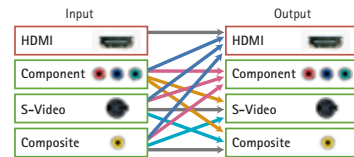
### Full Analogue Video Up-Conversion to HDMI with TBC (Time Base Corrector) (RX-V2600/RX-V1600)

Video composite, s-video and component signals are up-converted to HDMI digital output, with a Time Base Corrector (TBC) in the Analog Devices high performance encoder and decoder. If you have an HDMI compatible TV/monitor, you can enjoy high picture quality from analogue video signals (VCR/TV broadcasts). In addition, these receivers use an Oplus™ high-performance de-interlacer for the best quality progressive video images (480i to 480p or



Time Base Corrector Off (Left) vs. Time Base Corrector On (Right)

### RX-V2600 video up-conversion configuration



— Through — Conversion — 480i or 576i Only  
 — De-interlacing capable 480i → 480p or 576i → 576p  
 — Up Scaling with De-interlacing  
 480i or 576i → (480p or 576p) / 1080i / 720p  
 480p or 576p → 1080i / 720p  
 — Digital Video — Analogue Video

576i to 586p). The RX-V2600 also upscales 480i/576i signals to 1080i/720p high definition resolution.

### HDMI Interface for Digital Audio/Video Data Handling Capability (RX-V4600, RX-V2600 and RX-V1600)

These receivers offer 2 in / 1 out HDMI switching, providing the most advanced method of delivering high quality video signals to a home theater system to enable the reproduction of DVD and satellite TV sources with HD quality. Compatible with the HDMI Ver. 1.1 format, it can also decode digital audio signals from sources such as DVD-Audio, CD, Dolby Digital and DTS.



**HDMI™**  
HIGH DEFINITION MULTIMEDIA INTERFACE

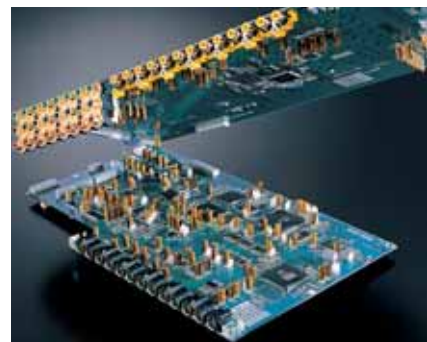
### Dual i.LINK (IEEE1394) Terminals (DSP-Z9 and RX-V4600)

i.LINK provides a digital connection for DVD-Audio Linear PCM, Super Audio CD DSD (Direct Stream Digital) and other high quality audio sources.



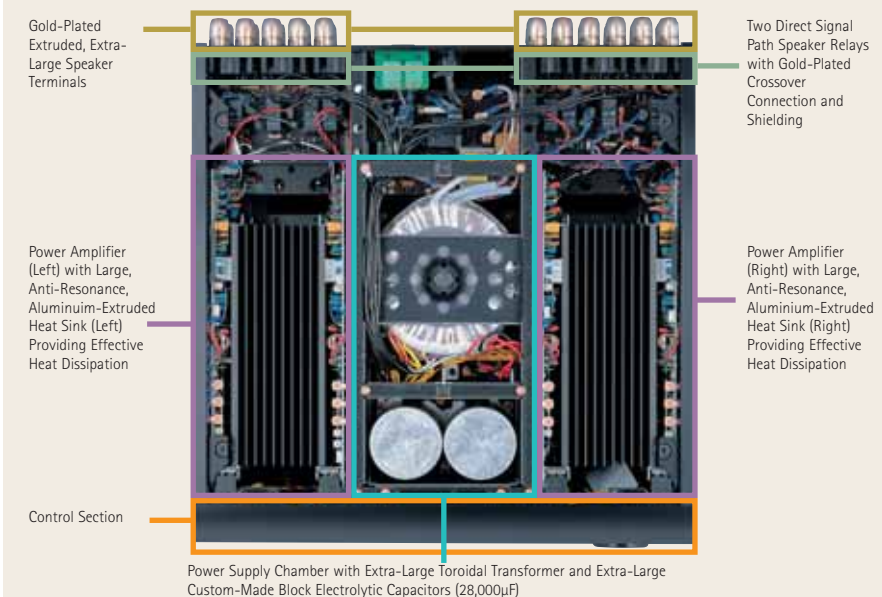
### HDTV (720p/1080i) Compatible Component Video Monitor Out

The frequency response of the component video monitor out signal is an extremely wide 5Hz-100MHz (DSP-Z9, RX-V2600 and RX-V1600; RX-V4600, RX-V757, RX-V657, RX-V557 and RX-V457 are 5Hz-60MHz), ensuring compatibility with HDTV (1080i/720p) monitors.



DSP-Z9 video circuit board

### DSP-Z9 High Grade Construction with Independent Chambers





# Home Theatre Technology

## ● Advanced Facilities

Custom Installation Compatibility (DSP-Z9, RX-V4600, RX-V2600, RX-V1600, RX-V757, RX-V657, RX-V557 and RX-797)

With these components, Yamaha has made it extremely convenient to set up a multi-room custom installation. And given you the ability to do it in a variety of ways. Now you can have sound in various rooms of the house without the need to purchase a lot of extra components.

- RX-V2600 and RX-V1600

Power amp channels can be assigned for Zone 2 and Zone 3 without the need for extra amplifiers. You can control Main/Zone 2/Zone 3 power, FM/AM tuning, volume and input select on the front panel, along with a Zone 2 on-screen display. There is Zone 2/3 tone control and even a separate Zone Remote Unit. There is also an RS-232C interface for a touch-panel controller.



Zone Remote Unit (RX-V2600)

GUI On-Screen Display with Dedicated Remote Control (DSP-Z9)

The DSP-Z9, RX-V4600 and RX-V2600 have the best looking and easiest to use on-screen display you've ever seen. This is due in part to the high quality video circuitry, which provides sharp, clear images. The GUI (Graphical User Interface) includes extensive yet easily understandable setup menus and has

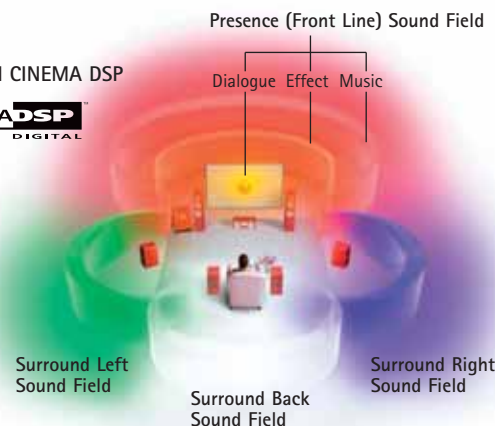


DSP-Z9 GUI Remote Unit

Conventional 7.1-Channel Systems



Quad-Field CINEMA DSP



been designed to make it easy to select and adjust desired functions. The RX-V4600 offers three and the RX-V2600 offers five display languages. The DSP-Z9 has provided a second remote control dedicated to GUI use.

YPAO Sets the Best Sound for Your Room — Automatically!



YPAO uses a small microphone and advanced processing technology to analyze room acoustics. It then automatically adjusts various speaker parameters for optimum sound quality at the listening position. It works in only three minutes and extremely easy to use. With YPAO, you do not have to worry about careful speaker placement and will be assured of "professionally calibrated" surround

sound quality. YPAO is available with the DSP-Z9, RX-V4600, RX-V2600, RX-V1600, RX-V757 and RX-V657.

## ● Surround Realism

Yamaha CINEMA DSP Uses Actual Sound Fields  
Yamaha DSP is superior to other surround sound systems because it is based on data from actual sound fields. Yamaha engineers went to famous venues around the world and used a proprietary technique to gather acoustic data, which is stored and processed by powerful, custom-designed LSIs. You enjoy a richer, deeper, and more realistic surround sound experience.

### Quad-Field CINEMA DSP

Quad-Field CINEMA DSP actually creates four independent sound fields that merge to envelop you in an unmatched surround sound experience. You hear movies and music with accurate sound localization, smooth movement across the sound space, exceptional clarity and remarkably realistic presence. It will seem as if the walls of your room have disappeared and you are in the middle of your own immense theatre!

### Night Listening Enhancer and SILENT CINEMA

During low-volume listening, such as late at night, dynamic range suffers and you may miss some sounds. The Night Listening Enhancer offers two modes, Cinema and Music, with three-level selectability, which will ensure that you don't miss movie dialogue or quiet passages, or lose overall surround spaciousness. It works for all surround programmes, including Dolby Pro Logic IIx.

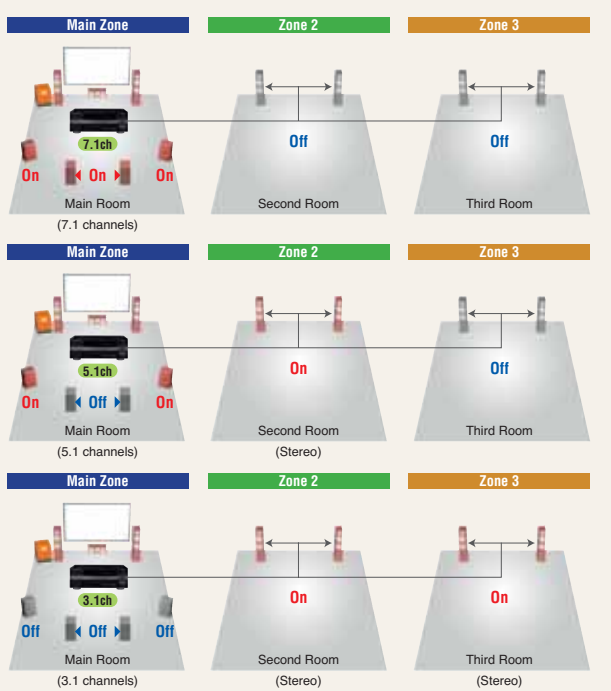
The SILENT CINEMA mode allows private listening enjoyment of multichannel music or movies, with an accurate simulation of surround sound, through ordinary headphones.

SILENT™ CINEMA



### Two Ways to Enjoy Sound in Your Home (RX-V2600 and RX-V1600)

For multi-room custom installations, power amp channels can be assigned in two ways: five for the Main Zone and two for Zone 2 (for 5.1 channel sound in the main room), and three for the Main Zone and two each for Zones 2 and 3 (for music in all three rooms without the need for extra amplifiers).





## Building Speakers for "Natural Sound"

When planning a high quality home theatre system, speakers should not be merely an afterthought. The better the speakers, the more fully realized the surround sound effect will be. At Yamaha, we build speakers based on a concept of achieving "natural sound," so movies, concerts and anything you listen to sounds amazingly realistic and lifelike. We accomplish this by ensuring that our speakers have wide and flat frequency response, wide dynamic range, high S/N ratio and extremely clarity in the dialogue/vocals range.

### Yamaha's Exclusive Advanced PMD Cone for Natural Sound Reproduction (525 A-PMD and 325 A-PMD Series)

The Advanced PMD (Polymer-injected Mica Diaphragm) cones are 15% lighter than previous types, thanks to the use of a low specific gravity material called PMP (Poly-Menthyl-Penten) that

provides faster response (speed of sound rise and fall). Internal loss has been increased by 43%, lessening unwanted resonances to achieve the smooth frequency response that results in natural-sounding vocals.

**Aluminium Diecast Baskets (525 A-PMD Series)** Aluminium provides three to five times higher flexural strength than the usual metal or plastic types. In addition, the baskets are 43% thicker than conventional baskets with the same diameter. By increasing stiffness and suppressing unwanted resonance, detailed musical nuances can be more clearly heard.

### Waveguide Horn (HX Series)

Modern movie theatres are designed to offer a highly absorptive acoustic environment in which soundtrack recordings with five or more channels can be used to achieve a rich sense of spatial expression. To achieve a similar level of spatial expression at home, it is therefore necessary to use speakers with a direct/reflected sound ratio that is quite different from the speakers used for conventional music recordings.



Waveguide Horn (NS-8HX)

### 3cm Aluminium Dome Tweeters with DC Diaphragm™ and New Frame (525 A-PMD and 325 A-PMD Series)

The high-performance tweeter features a dome made of an aluminium, with a DC Diaphragm that integrates

the diaphragm and voice coil. The magnet is an new extra-powerful neodymium type. As a result, the tweeter is extremely light to minimize sound loss, yet is highly durable. It is capable of reproduction all the way up to 100kHz, which is exceptional performance for a 3cm dome tweeter. Highs are crisp and clear even at high power levels.

### QD-Bass Technology

QD-Bass (Quatre Dispersion Bass) technology uses down-firing drivers with square, pyramid-shaped reflective plates to radiate the sound efficiently in four horizontal directions. The reflective plates negate any effects caused by the floor surface and reduce resonance between sound waves reflected from the floor and the unit.



### Advanced YST

Advanced Yamaha Active Servo Technology (Advanced YST) is a unique system in which the speaker and amplifier work together to cancel out impedance so the speaker unit has a perfectly linear motion. Advanced YST helps to ensure the highest levels of sound pressure and overall performance.



### Advanced YST II

In Advanced YST II, an Advanced Negative Impedance Converter enables the speaker cone to be driven with even tighter control. The result is more stable and accurate low range response, as well as higher sound pressure levels, for more natural and energetic bass reproduction.



### How Yamaha Achieves Our "Ideal" Sound.

The key to achieving the purest, most natural, and most pleasing sound is balance. Balance among the above three elements, balance among all the components that make up the speaker, and balance among subjective listening judgments.

### Testing and More Testing

Yamaha tests speakers in various ways, both before and after production. Each part of the speaker, be it a coil, a capacitor, or a cabinet, is selected out of many alternatives, which may be tested for months before a

decision is made. In the case of cabinets, for example, we often build 50 to 60 cabinets and test each one. In order to test many cabinets with many drivers in many configurations, we begin with computer simulations, then move to actual prototypes for measuring a myriad of factors, such as the variations of standing waves inside the cabinet. An anechoic chamber is used to obtain precise acoustic data on pre-production models. Even speaker finishes are rigorously tested for durability and how they influence the sound. We have an environmental room where speakers are tested for 500 hours in Amazon rain forest conditions, and five different listening rooms,

where speakers are carefully evaluated reproducing a variety of music and movie sources.

### The Final Judgment

Throughout the design process and especially in the final phase, our most important test equipments are the ears of our speaker experts. Having hard data is helpful, but deciding which cabinet sounds "better" and whether the speaker meets Yamaha's high standards can only be done by the "golden ears" of Yamaha speaker designers who have dedicated their lives to the pursuit of beautiful, natural sound.



1. Many cabinets are built and tested for each speaker series.
2. A testing room that simulates an actual listening room.
3. A wide range of parameters are tested.
4. Speakers undergo harsh environmental testing.

## A Brand New Style of Home Theatre.

Providing true multi-channel surround sound from a single unit, the YSP-1000 and YSP-800 are nothing short of a stylistic revolution in home theatre design. No speakers, no cables, just one elegant unit on a rack or mounted on a wall. The YSP-1000 and YSP-800: a beautiful idea.



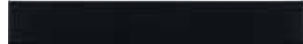


## YSP-1000 Digital Sound Projector

IntelliBeam **CINEMA DSP** **dts** **DOLBY DIGITAL** **SRS TruBass**



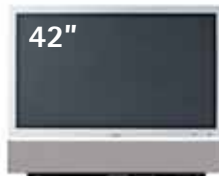
IntelliBeam optimizer microphone



Black finish available



SPM-K1: Optional wall hanging bracket



The YSP-1000 is a perfect match for 42" flat TVs and monitors.



The YSP-800 has been honoured with an EISA Award for Best Product 2005-2006: HT Innovation. The prestigious EISA Awards are chosen by media representatives from up to 20 European countries.

**HiFi Test** **WIDESCREEN** **HOMEVISION**



## YSP-800 Digital Sound Projector

IntelliBeam **CINEMA DSP** **dts** **DOLBY DIGITAL** **SRS TruBass**



IntelliBeam optimizer microphone



Black finish available



SPM-K8: Optional wall hanging bracket



The YSP-800 is a perfect match for 32" flat TVs and monitors.

### All-in-one multi-channel sound component – truly unique! An ideal match for 42" flat TVs and monitors.

True surround sound.

- Capable of delivering true multi-channel sound
- Large range of optimum listening positions thanks to a wider soundstage
- 7 CINEMA DSP programmes
- Two Volume Mode with Night Listening Enhancer and TV Equal Volume mode
- Dolby Digital, DTS, Dolby Pro Logic II and DTS Neo:6 compatibility
- TruBass for more dynamic bass sound

Only one unit, no speaker cables.

- No need for numerous speakers and cables
- Slim profile matching for 42" flat TVs and monitors
- Can be wall mounted or placed in a shelf or rack
- Design is more elegant, less obtrusive than multiple speaker boxes

Ready to go in minutes.

- IntelliBeam automated calibration system (vertical + horizontal)
- 5 beam modes: 5 Beam, 3 Beam, Stereo+3 Beam, Stereo and Target Mode
- IR signal transmission for remote control
- Custom installation compatibility: Remote in/out and RS-232C interface
- Yamaha original digital amplifier
- On-screen display
- Video input selection
- Preset remote unit
- 0.1W standby power consumption



The YSP-1000 connection panel offers 2 optical, 1 coaxial digital and 2 analogue audio input, 3 composite in 1 video output and component out, 2 in, subwoofer output, an remote in and an RS-232C terminals. The YSP-1000 offers a terminal for the IntelliBeam optimizing microphone and remote out terminal on front panel.

### Multi-channel surround sound enjoyment from a single compact component! – the best match for 32" flat TVs.

True surround sound.

- Capable of delivering true multi-channel sound
- Large range of optimum listening positions thanks to a wider soundstage
- 3 CINEMA DSP programmes
- Dolby Digital, DTS, Dolby Pro Logic II and DTS Neo:6 compatibility
- Two Volume Mode with Night Listening Enhancer and TV Equal Volume mode
- TruBass for more dynamic bass sound

Only one unit, no speaker cables.

- No need for numerous speakers and cables
- Compact and slim profile matching for 32" flat TVs and monitors
- Can be wall mounted or placed in a shelf or rack
- Design is more elegant, less obtrusive than multiple speaker boxes

Ready to go in minutes.

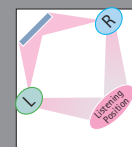
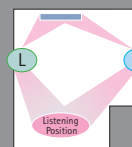
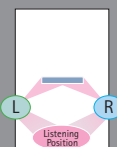
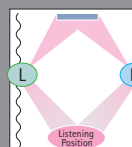
- IntelliBeam automated calibration system
- 5 beam modes: 5 Beam, 3 Beam, Stereo+3 Beam, Stereo and Target Mode
- Yamaha original digital amplifier
- On-screen display
- Preset remote unit
- 0.1W standby power consumption



The YSP-800 connection panel offers 2 optical/1 coaxial digital and 2 analogue input, subwoofer, video out for on-screen display and system connector for subwoofer. The YSP-800 also offers a terminal for the IntelliBeam optimizing microphone on front panel.

The YSP-1000 and YSP-800 can be used any type of rooms.

If the room has an alcove or other irregularity, the settings can be adjusted to compensate, so the surround enjoyment can be assured.



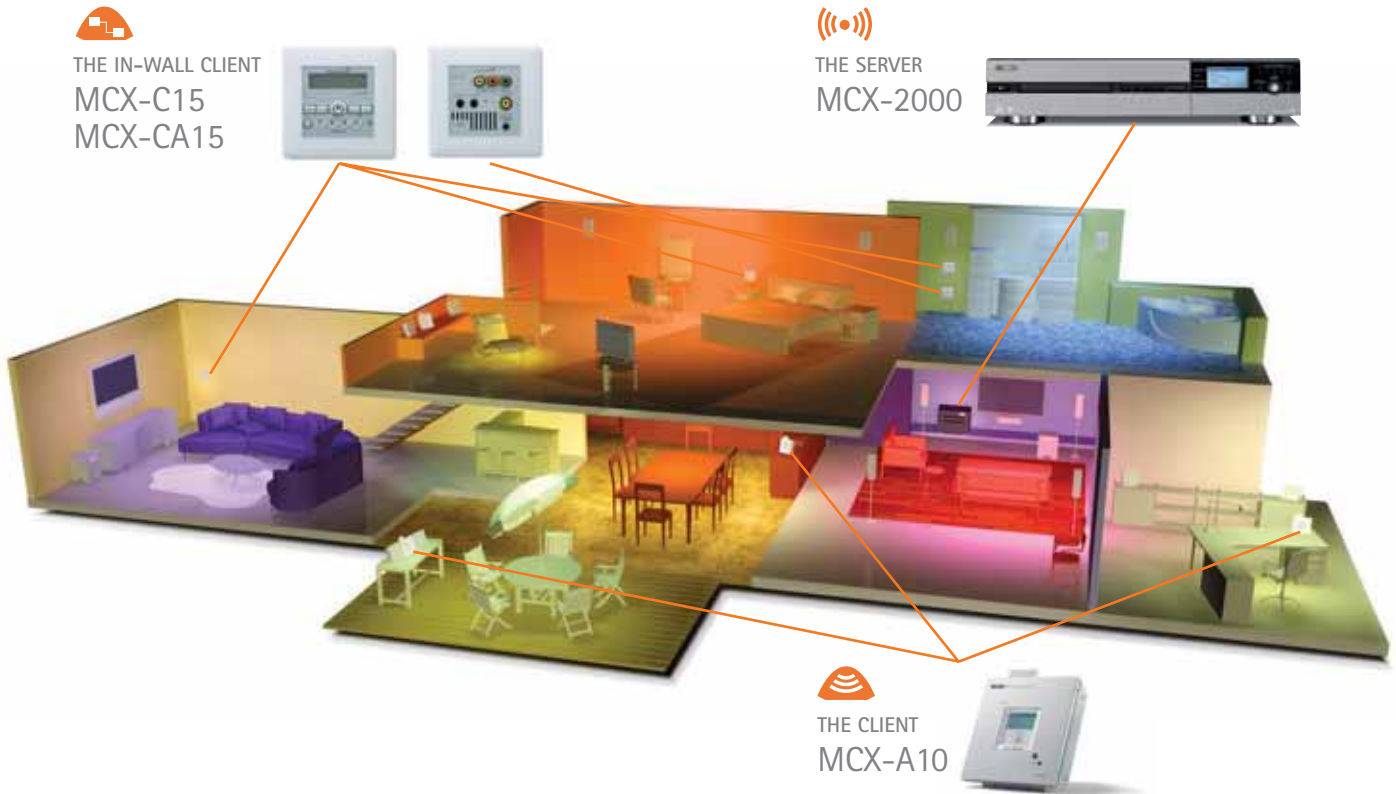
# MusicCAST

Interactive Home Music Network System

Give everyone in the family instant access to their favourite music in their own room – or anywhere else in the house!

A multi-room home entertainment system that you can easily set up yourself. MusicCAST will store your entire family's favourite music on a high-capacity hard disk and let each person select and listen to their own music in any of 16 different locations.

In addition to the normal portable Clients, MusicCAST is now also available with In-Wall Clients for custom installation. With outstanding convenience and extensive capabilities, this system takes family music enjoyment to a whole new level.



THE IN-WALL CLIENT  
MCX-C15  
MCX-CA15



THE SERVER  
MCX-2000



THE CLIENT  
MCX-A10



THE SERVER



**MCX-2000** Digital Audio Server

- Dimensions (W x H x D): 435 x 95 x 409 mm
- Weight: 6.6 kg



**MCX-1000** Digital Audio Server

- Dimensions (W x H x D): 435 x 136 x 434 mm
- Weight: 11.5 kg



THE CLIENT



**MCX-A10**

Digital Audio Terminal

- Dimensions (W x H x D): 210 x 245 x 79 mm
- Weight: 2 kg



Clients are used to retrieve music content stored on the MusicCAST server, for instant access to music in any location within your home.

**THE SERVER**

MCX-2000/MCX-1000

**THE CLIENT**

MCX-A10 / MCX-SP10

**Wireless, multi-room, multi-selectable music library.**

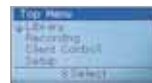
■ **PC content playback:** The MCX-2000 broadens music enjoyment throughout your home with the ability to play back music files from a PC. Edit library items using the PC web browser. Also, there are tentative plans to offer Digital Living Network Alliance (DLNA) compatibility.

\* Requires Windows® PC running Windows XP®..

■ **Simply wireless:** You can enjoy and control music in as many as 16 locations: one Server and 15 Clients (5 wireless plus 10 wired).

■ **Store 3000 CDs of music:** A huge amount of music is at your fingertips. The hard disk stores up to 3,000 CDs of music in MP3 format.

■ **Easy-setup**



Large LCD front panel display (MCX-2000)

■ **User friendly:** The Server has a GUI with on-screen menus and the Clients have large panel displays.

■ **Radio choices:** FM tuner and Internet Radio compatibility.

■ **Create your own CDs:** You can even make your own CDs from playlists of songs you have selected.

■ **Automatic retrieval of music information:** Various information about songs, such as artist name, album name, song list and music genre can be retrieved automatically from the Internet (Gracenote® Music Recognition Service) or, if not connected to the Internet, from an internal database.

Music recognition technology and related data are provided by Gracenote®.

**THE IN-WALL CLIENT**

MCX-C15 / MCX-CA15

**The MusicCAST client system, MCX-C15 and MCX-CA15, offers extensive features and flexibility.**

■ **In-wall installation:** Great control within reach, yet out of the way...bring home the convenience of this intelligently integrated in-wall mountable MusicCAST Client into your living environment. With variety of installation configuration available, now every room is fully customizable to enjoy the benefits the MusicCAST music distribution system can provide.

■ **Favourites selection:** The four Favourites buttons allow direct playback of various sources. Each can be assigned the following functions: playlist, analogue or digital inputs from Server, tuner presets, local Aux input from MCX-CA15. Favourite selections can be made even when the MCX-C15 is in sleep mode.



■ **IR flasher support:** The MCX-C15 supports limited IR transmission functions for custom installation. IR signals from the MCX-C15 can be transmitted to the MCX-CA15 or the I/O Box, and can drive an IR flasher for remote control of other components. The function works on only 38kHz modulation frequency.

\* IR flasher units are not available from Yamaha.

■ **Yamaha AV link:** The MCX-C15 can generate extended IR commands to control a Yamaha AV amplifier / receiver, if more power than the MCX-CA15 is desired. The following functions can be controlled via the MCX-C15 remote control: volume, input selection, tuner preset selection, sleep and standby modes.

**THE IN-WALL CLIENT**

High sound quality exclusive MusicCAST speaker system. Not available in some areas.

**MCX-SP10**

Optional Speaker System

■ Dimensions (W x H x D): 210 x 210 x 79 mm ■ Weight: 1.2 kg

**MCX-C15**

Distributed Audio Controller

■ Dimensions (W x H x D): 120 x 120 x 106 mm

**MCX-C15 Family**

This multipurpose in-wall amplifier is perfectly matched to the MCX-C15 Client. It provides high quality power to speakers, as well as subwoofer and video OSD outputs.

**MCX-CA15**

Distributed Audio Amplifier

■ Dimensions (W x H x D): 120 x 120 x 106 mm



Movies have never looked better in the home than they do on this extraordinary plasma display monitor. HDTV and other TV broadcasts will also look superb. For the finest in home theatre viewing, as well as superior control, convenience and versatility, the PDM-4220 is the clear choice.

42" plasma display monitor that delivers incredibly smooth, HD-Ready for an exceptional home theatre viewing experience.

- Natural Black Drive System with high resolution: 1,024 x 1,024 pixels
  - 1,000:1 contrast ratio • Advanced ALIS Method Panel Technology with AR-film coating • High brightness: 1,200 cd/m<sup>2</sup> • 68.6 billion colours
  - HD-Ready (HDMI compatible): 1080i signal playback capability without scaling • Digital Linear Colour Control with blue and green colour improvement • Long life: 60,000 hours\* • Convenience side input terminals • 3:2 pulldown detection type i/p conversion circuit • 3 picture modes: Dynamic, Natural, Cinema • 4 colour temperature modes: Normal, Cool, Warm, Black/White
  - On-screen display with choice of 10 languages
  - Side-by-side picture • Picture-in-picture • Multi picture mode • Fanless quiet operation
- <Options> • PDS-342: Swivel stand  
• PWK4210E: Wall-hanging brackets

\* Until panel brightness reduced to 40%. Yamaha measurement.



PDS-342: Swivel stand



(Depth: 104 mm)

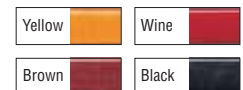


The PDM-4220 connection panels offer digital input (RGB 1), HDMI input, analogue input (RGB 2), analogue audio input (RGB 1 and RGB 2: 3.4mm stereo mini jack), and control terminal.

## PDM-4220 Plasma Display Monitor



The YWB-4210 offers four colour variations.



## YWB-4210 Optional Wooden Bezel for PDM-4220

• not available in some areas



## Cinema Projectors: This Is What "Home Theatre" Really Means.

What should high-end home theatre look and sound like? Yamaha supplies the answer a high-end system including Yamaha cinema projector. An unrivaled combination of top-class components for stunning visual clarity and stupendous surround sound. Get ready to explore the full possibilities of home theatre entertainment.



**DPX-1300** Digital Cinema Projector



The previous DPX-1000 has been honoured with an EISA Award for High-End AV Product 2003-2004. The prestigious EISA Awards are chosen by media representatives from up to 20 European countries.

Incorporating the most advanced technology and numerous convenient functions, This projector delivers extraordinary video performance, including high contrast ratio.

- Yamaha Natural Black concept
- Full HD 10-bit processing
- HQV™ (Hollywood Quality Video) technology from Silicon Optix
- Yamaha exclusive overshoot suppressor
- 5,000:1 contrast ratio
- 720p DarkChip3™ DMD™ device
- High resolution lens (F=2.7 to 5.0)
- Natural colour adjustment system
- 7-segment colour wheel
- Motorized iris control for higher contrast
- Horizontal and vertical keystone correction with minimal distortion in all directions
- Lamp power selector
- Versatile interfaces with HDMI and DVI with HDCP support
- 28dB quiet operation
- Motorized vertical lens shift  $\pm 50\%$
- <Accessories>
- PJL-427: Optional lamp cartridge
- PMT-L31: Optional installation brackets for low ceiling
- PMT-H35: Optional installation brackets for high ceiling



In addition to the input A and input B (component video and RGB signal) terminals, the DPX-1300 rear panel offers an HDMI input terminal, DVI input terminal, composite video input terminals, D4 video input terminal, remote in/out terminal, and RS-232C and control out (12V/200mA) terminals.



**DPX-530** Home Cinema Projector



High-performance DLP projector utilizing Yamaha Natural Black and other superior technologies for high contrast, high brightness and magnificent colours.

- Yamaha Natural Black Concept
- 4,000:1 contrast ratio
- High brightness: 1,500 ANSI lumens
- Latest 576p Darkchip2™
- Motorised iris control for higher contrast
- 7-segment colour wheel
- Low light leakage
- Long 4,000-hour lamp life
- 30dB quiet operation
- DVI-D terminal and HDMI compatibility
- <Accessories>
- PMT-H75: Optional installation brackets for high ceiling (Lens centre: 570-870mm)
- PMT-L71: Optional installation brackets for low ceiling (Lens centre: 190mm)
- PJL-625: Optional lamp cartridge



In addition to a component video terminal, the DPX-530 rear panel offers a DVI interface (DVI-D and HDCP compatible), composite video terminal, S-Video terminal, analogue RGB terminal, and RS-232C terminal (with cable).

## Home Theatre That Looks and Sounds Exquisite.

This is not the most expensive home theatre system you can buy, but it certainly looks and sounds like it! The RX-V2600 is one of a group of components that will give you everything you hope for in your home theatre. In fact, no matter what Yamaha components you put together, you'll be at the cutting edge of home entertainment.



## Only Yamaha could set these goals for a home theatre amplifier – and achieve them!

The DSP-Z9 was developed to achieve three ambitious goals: deliver the highest sound quality, provide the highest picture quality, and be the easiest amplifier to use. We believe we succeeded in all three areas, but we invite you to judge for yourself – we're confident that the DSP-Z9 will totally satisfy your highest expectations for a home theatre amplifier.

The DSP-Z9 has been honoured with an EISA Award for Home Theater High End Component 2004-2005. The prestigious EISA Awards are chosen by media representatives from up to 20 European countries.



## DSP-Z9 *[Fi]* 9.1-Channel Digital Home Theatre Amplifier



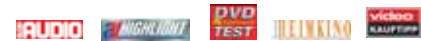
- 9-channel powerful surround sound (7-Channel x 300W/ch + 2-Channel x 90W/ch) • Digital Top-ART and High Current Amplification • YPAO (Yamaha Parametric Room Acoustic Optimizer)
- On-screen display with GUI (Graphical User Interface) and dedicated remote control • 192 kHz/24-bit DACs for all channels • Pure Direct • Digital component video up conversion (full)
- Progressive Scan video output • Faroudja's TrueLife Enhancer • 108MHz/10-bit video DAC
- DCDi processing • Dolby Pro Logic IIx and DTS 96/24 compatibility • 39 surround programmes • THX Ultra2 processing • Night Listening mode and SILENT CINEMA • Linear Damping • Digital tone controls • 9-band graphic equalizer • Audio Delay for adjusting lip-sync
- Selectable 9-band subwoofer crossover • High grade construction with independent chambers and anti-vibration design • Extra-large toroidal transformer • Extra-large (28,000µF) custom made block electrolytic capacitors • Gold-plated-extruded gigantic speaker terminals • Anti-resonance, Alumite-finish heat sinks • A/V rec out/Zone 2 selector • Custom installation compatibility • NSV (Noise Shaped Video) • Time Base Corrector
- Wide-range video bandwidth (100MHz -3 dB)



Optimizer microphone



Direct access (macro command, learning capable and preset) remote unit (right) and dedicated GUI remote unit



Black finish available



Oil-Damped Hidden Control Panel offers Video Aux terminals with optical digital and S-Video terminals, AV rec out/Zone 2 selector, multi-jog dial with tone controls (digital), Input Select/Multi-Channel Input switches, Straight/Effet switch, optimizer microphone terminal for YPAO, headphone terminal for enjoying SILENT CINEMA, and so on.



### DSP-Z9 extensive connections

- 8\* optical, 4 coaxial digital inputs (fixed and assignable)
- 8\* A/V and 5 audio (audio signal) inputs, 3 A/V and 2 audio (audio signal) outputs, and Zone 2 audio output
- 3 optical digital outputs (fixed and assignable)
- 6 component video inputs (fixed and assignable) and 2 monitor component video outputs
- 2 monitor (with S-Video) outputs, 8\* video inputs/3 video outputs (with S-Video), and Zone 2 video (with S-Video) output
- Pure Direct 2-channel input
- Pre-main and centre couplers, surround, surround back and presence preouts, and subwoofer output
- 8-channel external decoder input
- RS-232C interface, dual programmable control outputs for automatic power on of other components (+12V, 15mA) and remote control IR code input/output
- Zone 2 coaxial digital output
- i.LINK (IEEE 1394) digital audio interface
- Terminal for detachable power cable

\* Including Video Aux terminals on front panel

**7.1-channel receiver delivers amazingly lifelike surround sound and offers special features like HDMI, YPAO, i.LINK and multi-zone control capability.**

One look at the photo and list of features below tells you instantly that this is a serious piece of equipment. And when you audition it, you will be even more impressed. Quite simply, this is a receiver that does it all, and does it better than almost any other receiver on the market. Offering Yamaha's most advanced features and extraordinary versatility, this is what is meant by "the high end."



**RX-V4600** *[Fi]* 7.1-Channel Digital Home Theatre Receiver



- HDMI interface for high quality digital audio and video data handling capability
- Dual i.LINK (IEEE1394): DVD-Audio and Super Audio CD digital audio data handling capability
- 7-channel 190W/Ch powerful surround sound
- Digital ToP-ART and High Current Amplification
- Pure Direct for high quality sound reproduction
- Zone control with additional zone remote unit
- Zone 2 speaker out (power assignable)
- On-screen display with GUI (Graphical User Interface) in German, French or English
- YPAO with six system memories
- 22 surround programmes and 5 THX Select2 programmes
- High-performance CINEMA DSP with latest surround format compatibility
- 192 kHz/24-bit DACs for all channels
- Digital tone controls
- Rec out/Zone 2 selector
- Dialogue Lift for dialogue from screen centre
- Selectable 9-band subwoofer crossover
- Subwoofer phase select
- Speaker A, B or A+B selection via remote unit and front panel
- Night Listening Enhancer ensures that all programmes (including Dolby Pro Logic IIx)
- SILENT CINEMA and Virtual CINEMA DSP
- Audio Delay for adjusting lip-sync
- Direct-access (macro-command, learning and preset capable) remote unit with illuminated buttons



YPAO optimizer microphone

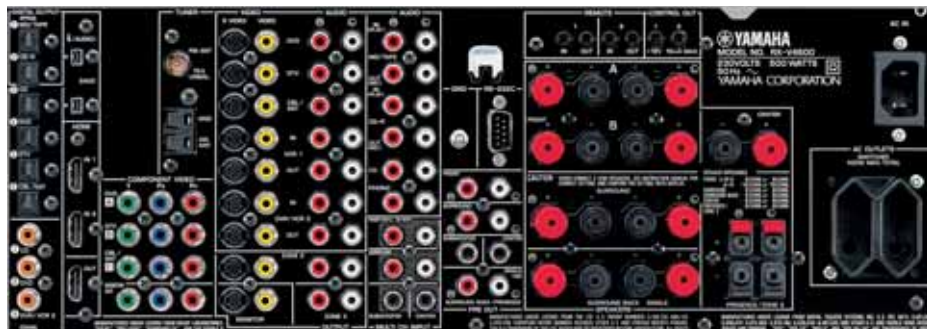


Direct access (macro command, learning capable and preset) remote unit (right) and dedicated Zone remote unit (left)



Oil-Damped Hidden Control Panel offers Video Aux terminals with optical digital and S-Video terminals, AV rec out/Zone 2 selector, Zone control and Main/Zone 2/Zone 3 on/off switches, tone controls (digital), Audio Select/Multi-Channel Input switches, optimizer microphone terminal for YPAO, headphone terminal for enjoying SILENT CINEMA, and so on.

- RX-V4600 extensive connections**
- 2 in/1 out HDMI interface for digital audio/video data handling capability
  - Dual i.LINK (IEEE 1394) digital audio data handling capability
  - 5\* optical, 3 coaxial digital inputs (fixed and assignable)
  - 2 optical digital outputs (fixed and assignable)
  - 6\* A/V and 4 audio inputs, 2 A/V and 2 audio (audio signal) outputs, and Zone 2 audio/video and Zone 3 audio outputs
  - 3 component video inputs (fixed and assignable) and 1 monitor component video outputs
  - 1 monitor (with S-Video) output
  - Main, centre, surround and surround back preouts, and subwoofer output
  - 8-channel external decoder input
  - RS-232C interface for touch panel controller
  - Dual programmable control outputs for automatic power on/off other components (+12V, 15mA)
  - Power-amp assignable and dual IR port for Zone 2 and Zone3
  - Terminal for detachable power cable
- \* Including Video Aux terminals on front panel



# DIGITAL TOP-ART



## RX-V2600 [Ti] 7.1-Channel Digital Home Theatre Receiver



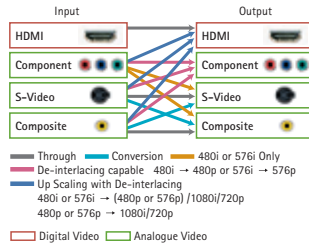
Oil-Damped Hidden Control Panel includes S-video input and optical digital input terminals for connecting game machines, digital equipment, and so on.



YPAO optimizer microphone



GUI language selection display



An outstanding A/V receiver with it all! HDMI Interface, full video analogue up-conversion to HDMI, de-interlacing and up-scaling, and multi-room custom installation.

- Full analogue video up-conversion and up-scaling to HDMI (1080i/720p) with TBC (Time Base Corrector)
- De-interlacing (480i to 480p or 575i to 576p)
- 2 in/1 out HDMI interface
- Superior zone control with additional zone remote unit
- Pure Direct
- 7-channel 190W/Ch powerful surround sound
- Digital ToP-ART and High Current Amplification
- Burr-Brown 192 kHz/24-bit DACs for all channels
- Assignable amplifiers for bi-amp connection
- YPAO with 6 system memories
- Superior audio-grade parts and devices
- Wide-range video bandwidth (100MHz -3 dB)
- On-screen display with GUI (4 languages: German, French, English and Spanish)
- 22 surround programmes with 5 THX Select2 programmes
- Dolby Pro Logic IIx and DTS 96/24 compatibility
- Low-noise discrete power supply for preamp stage
- Analogue-digital complete individual circuitry
- High dynamic power and Linear Damping
- Audio Delay
- Extended remote control codes, dual remote terminals for Zone 2 and Zone 3 and dual +12V control outputs
- RS-232C interface for touch panel controller
- Dialogue Lift
- Selectable 9-band subwoofer crossover
- Subwoofer phase select
- Night Listening Enhancer
- SILENT CINEMA and Virtual CINEMA DSP
- Speaker A, B or A+B selection, with Virtual CINEMA DSP capability in Zone B
- Detachable power cable



Direct-access remote unit with illuminated buttons (right) and dedicated zone remote unit (left)



# DIGITAL TOP-ART



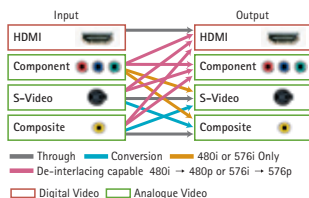
## RX-V1600 [Ti] 7.1-Channel Digital Home Theatre Receiver



Oil-Damped Hidden Control Panel includes S-video input and optical digital input terminals for connecting game machines, digital equipment, and so on.



YPAO optimizer microphone



Top-class receiver with many impressive features HDMI interface, full analogue video up-conversion to HDMI, de-interlacing, multi-room custom installation and dedicated zone remote unit.

- Full analogue video up-conversion to HDMI with TBC (Time Base Corrector)
- De-interlacing (480i to 480p or 576i to 576p)
- 2 in/1 out HDMI interface
- Superior zone control with additional zone remote unit
- Pure Direct
- 7-channel 170W/Ch powerful surround sound
- Digital ToP-ART and High Current Amplification
- Burr-Brown 192 kHz/24-bit DACs for all channels
- Assignable amplifiers for bi-amp connection
- Wide-range video bandwidth (100MHz -3 dB)
- 19 surround programmes with 5 THX Select2 programmes
- Dolby Pro Logic IIx and DTS 96/24 compatibility
- Accurate touch volume control
- 3 component video inputs
- Low-noise discrete power supply for preamp stage
- Analogue-digital complete individual circuitry
- Audio Delay
- High dynamic power and Linear Damping
- Extended remote control codes, remote terminal for Zone 2 and Zone 3 and dual +12V control outputs
- RS-232C interface for touch panel controller
- Dialogue Lift
- Selectable 9-band subwoofer crossover
- Subwoofer phase select
- Night Listening Enhancer
- SILENT CINEMA and Virtual CINEMA DSP
- Speaker A, B or A+B selection, with Virtual CINEMA DSP capability in Zone B
- Detachable power cable



Direct-access remote unit with luminescent buttons (right) and dedicated zone remote unit (left)



DIGITAL  
TOP·ART



**RX-V757** *[Fi]* 7.1-Channel Digital Home Theatre Receiver



YPAO optimizer microphone



Top-class 7.1-channel receiver delivering high sound quality and superb picture quality, as well as outstanding features like YPAO, Quad-Field CINEMA DSP and Night Listening Enhancer.

- 7-channel 150W/Ch powerful surround sound
- Digital ToP-ART and High Current Amplification
- YPAO for automatically optimizing the sound in your room
- Component video up conversion (full)
- Learning-capable remote control unit with LCD indication
- Dialogue Lift for dialogue from screen centre
- Pure Direct for high quality sound reproduction
- Phono input
- Zone 2 out (assignable power amplifier), remote in/out and speaker B for custom installation
- On-screen display
- Quad-Field CINEMA DSP and 14 surround programmes
- Night Listening Enhancer (Cinema/Music) and SILENT CINEMA



DIGITAL  
TOP·ART



**RX-V657** *[Fi]* 7.1-Channel Digital Home Theatre Receiver



YPAO optimizer microphone



7.1-channel receiver offering many exclusive Yamaha functions including YPAO automatic optimization, Quad-Field CINEMA DSP, component video up conversion and Dialogue Lift.

- 7-channel 145W/Ch powerful surround sound
- Digital ToP-ART and High Current Amplification
- YPAO for automatically optimizing the sound in your room
- Component video up conversion (full)
- 8-channel external decoder input
- Dialogue Lift for dialogue from screen centre
- Pure Direct for high quality sound reproduction
- Night Listening Enhancer (Cinema/Music) and SILENT CINEMA
- Zone 2 out (assignable power amplifier), remote in/out and speaker B for custom installation
- On-screen display
- Quad-Field CINEMA DSP and 14 surround programmes



DIGITAL  
TOP·ART



**RX-V557** *[Fi]* 6.1-Channel Digital Home Theatre Receiver



6.1-channel receiver offering a wide range of desirable features such as 135W/Ch power and component video up conversion.

- 6-channel 135W/Ch powerful surround sound
- Digital ToP-ART and High Current Amplification
- Component video up conversion (full)
- Night Listening Enhancer (Cinema/Music) and SILENT CINEMA
- 192 kHz/24-bit DACs for all channels
- Dolby Digital EX, DTS-ES, Dolby Pro Logic IIx and DTS 96/24 compatibility
- Zone 2 out, remote in/out and speaker B for custom installation
- Audio Delay for adjusting lip-sync (0-160ms)
- Selectable 9-band subwoofer crossover / Subwoofer phase select
- Quad-Field CINEMA DSP and 14 surround programmes
- Aluminium front panel
- 4 digital (3 optical and 1 coaxial) inputs



DIGITAL  
TOP·ART
**RX-V457** *HiFi* 6.1-Channel Digital Home Theatre Receiver

**CINEMA DSP**  
DIGITAL

 SILENT™  
CINEMA

 DOLBY  
DIGITAL EX  
PRO LOGIC II

 dts  
96 ES  
24/192

**6 CH**  
EXT. INPUT

DVD

 BLU-RAY  
Player


High-power 130W/Ch 6.1-channel receiver with special features like Quad-Field CINEMA DSP and Night Listening Enhancer, plus much more.

- 6-channel 130W/Ch powerful surround sound • Digital ToP-ART and High Current Amplification • Night Listening Enhancer (Cinema/Music) and SILENT CINEMA • Dolby Digital EX, DTS-ES, Dolby Pro Logic IIx and DTS 96/24 compatibility • 192kHz/24-bit DACs for all channels • Direct Stereo for high quality 2-channel sound reproduction • Audio Delay for adjusting lip-sync (0–160ms) • Quad-Field CINEMA DSP and 14 surround programmes • Selectable 9-band subwoofer crossover / Subwoofer phase select • 2 component video inputs and 3 digital inputs • Preset remote unit with coloured buttons • 3 S-Video inputs


**RX-V357** 5.1-Channel Digital Home Theatre Receiver

**CINEMA DSP**  
DIGITAL

 SILENT™  
CINEMA

 DOLBY  
DIGITAL  
PRO LOGIC II

 DIGITAL  
SURROUND

**6 CH**  
EXT. INPUT


Powerful 105W/Ch 5.1-channel surround sound with Quad-Field CINEMA DSP and many other exclusive Yamaha features for a thoroughly enjoyable home theatre experience.

- 192kHz/24-bit D/A converters for all channels • Night Listening mode and SILENT CINEMA • Dolby Digital/Matrix 6.1 and DTS/Matrix 6.1 compatibility plus Dolby Pro Logic II decoding • 5-band centre graphic equalizer • 5-channel 105W/Ch powerful surround sound • 3 digital audio inputs (fixed and assignable) • Quad-Field and Tri-Field CINEMA DSP and 14 surround programmes • 2 component video inputs • Speaker A or B selection • Analogue mixdown

DIGITAL  
TOP·ART
**RX-V100D** *HiFi* 6.1-Channel Digital Home Theatre Receiver

**CINEMA DSP**  
DIGITAL

 SILENT™  
CINEMA

 DOLBY  
DIGITAL EX  
PRO LOGIC II

 dts  
96 ES  
24/192

**6 CH**  
EXT. INPUT

**DAB**  
Digital Audio Broadcasting

• not available in some areas



Full-function, high-power 6-channel 130W/Ch with special features like DAB tuning, CINEMA DSP and Night Listening Enhancer, plus much more.

- DAB (Digital Audio Broadcasting) reception capability • 6-channel 130W/Ch powerful surround sound • Digital ToP-ART and High Current Amplification • Night Listening Enhancer (Cinema/Music) and SILENT CINEMA • Dolby Digital EX, DTS-ES, Dolby Pro Logic IIx and DTS 96/24 compatibility • 192kHz/24-bit DACs for all channels • Direct Stereo for high quality 2-channel sound reproduction • Audio Delay for adjusting lip-sync (0–160ms) • Quad-Field CINEMA DSP and 14 surround programmes • Selectable 9-band subwoofer crossover / Subwoofer phase select • 2 component video inputs and 3 digital inputs • Preset remote unit with coloured buttons • 3 S-Video inputs



## DVD's new level of high class entertainment.

Whether you simply want to enjoy the latest DVDs in top quality or use the DVD-Audio and Super Audio CD high-resolution audio standards with your player. Yamaha offers a tailor-made solution for every application. Plus a high quality DVD Recorder with a wide range of versatile functions.



### DVD-S2500 *HiFi* DVD-Audio/Video and Super Audio CD Player



#### High quality DVD-Audio/Super Audio CD player will be the focal point of an impressive home theatre system.

**HDCP and HDMI Compatibility**  
HDCP and HDMI are both advanced versions of DVI (Digital Video Interface). They provide superb video quality, much better than a component connection. HDCP includes content protection and HDMI handles both video and audio. These connections provide 480p, 576p, 720p and 1080i digital video output capability.



**Dual i.LINK (IEEE1394) Terminals**  
i.LINK provides a digital connection for DVD-Audio Linear PCM, Super Audio CD DSD (Direct Stream Digital) and other high quality audio sources.



**DVD-Audio/Super Audio CD Playback**  
The DVD-S2500 is compatible with both DVD-Audio and Super Audio CD. These multi-channel music

formats provide a surround sound music experience that is much more natural and lifelike than normal stereo.

**DCDi Progressive Scanning with 3:2 Pull-Down**  
The DVD-S2500 has a progressive scan processor built in, so progressive video images can be viewed on a digital TV or monitor. Also it provides Motion Adaptive Noise Reduction, Cross Colour Suppressor, Aspect Ratio Conversion and TrueLife Enhancer.

**Aluminium Front Panel**  
An aluminium front panel is used to effectively shield sensitive low-level circuitry from external noise and electronic radiation generated by dimmer switches, HVAC, fluorescent lighting and video display (CRT, LCD, Plasma). This ensures that the DVD-S2500 product provides optimum sonic performance in the widest range of installation environments.

- Other Notable Features**
- Progressive Scan (PAL/NTSC) • 216MHz/12-bit video DAC • 192kHz/24-bit (DVD-Audio) and Super Audio CD compatible audio DAC • On-screen display with GUI (Graphical User Interface) • Video Off mode • MP3 (multisession and ID3Tag) to CDR playback • Picture CD and JPEG (multisession) playback • Gold-plated terminals for all pin jacks



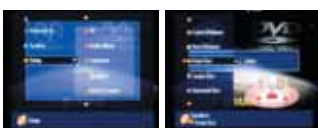
HDMI LSI (left) and i.LINK (IEEE1394) LSI (right)



The DVD-S2500 rear panel offers optical and coaxial digital audio output terminals, component video output terminals (progressive/interlace), S-Video and composite video output terminals, mixed 2-channel audio output terminals, 5.1-channel discrete audio output terminals, HDMI terminal, dual i.LINK (IEEE1394) terminals, RS-232C interface, remote control IR code input/output, a terminal for a detachable power cable and SCART terminal.



### DVD-S1500 *HiFi* DVD-Audio/Video and Super Audio CD Player



GUI (Graphical User Interface) for easy use



Uses new video and audio technologies for superior performance and allows playback of both DVD-Audio and Super Audio CD discs.

- DVD-Audio and Super Audio CD playback • Progressive Scan (PAL/NTSC)
- PAL/NTSC conversion • CD upsampling • Audio Direct mode • Faroudja DCDi processing for smooth and natural images without staircasing or jaggies • 192kHz/24-bit audio D/A conversion for high sound quality
- 108MHz/12-bit video D/A conversion for high picture quality
- On-Screen Display with GUI (Graphical User Interface)
- DVD-Video, Super VCD, VCD, JPEG (multisession), Audio CD and CDR MP3 (multisession) playback • DVD+RW/+R\*, DVD-R/-RW\* and CDR MP3, \*\*\* playback • Detachable power cable • Gold-plated terminals for all pin jacks • Aluminium front panel





DVD-S657 DVD Player



The DVD player that provides not only high picture quality but outstanding audio performance, plus DVD-Audio/Super Audio CD playback.

- Progressive Scan (PAL/NTSC) • 108MHz/12-bit video D/A converter • DVD-Audio/Super Audio CD playback • CD upsampling • 192kHz/24-bit audio D/A converter • Audio Direct • Versatile format and disc compatibility such as VR format recorded DVD-RW (with CPRM) and DVD+R Double Layer (DL) playback • MP3, JPEG, DivX and WMA multisession playback with navigation display • Picture CD (such as JPEG) playback with thumbnail display • JPEG/MP3 simultaneous playback for slide show



DVD-S557 DVD Player



Slim Progressive Scan DVD player with outstanding picture and sound quality, plus a wide range of convenient functions.

- Progressive Scan (PAL/NTSC) • 108MHz/12-bit video D/A converter for high picture quality • CD upsampling • 192kHz/24-bit audio D/A converter for high sound quality • Versatile format and disc compatibility such as VR format recorded DVD-RW (with CPRM) and DVD+R Double Layer (DL) playback • PAL/NTSC conversion • MP3, JPEG, DivX and WMA multisession playback with navigation display • Picture CD (such as JPEG) playback with thumbnail display • JPEG/MP3 simultaneous playback for slide show



DV-SL100 DVD Player



Elegantly DVD Player with advanced technology and features for outstanding performance.

- Progressive Scan (PAL/NTSC) • PAL/NTSC conversion • DVD-Video, SVCD, VCD, Audio CD and JPEG/MP3 (multisession) playback • DVD+RW/+R\*, DVD-R/-RW\* and CD-R/RW\*\*,\*\*\* playback • 54MHz/12-bit video DAC for high picture quality • Picture CD playback with display • Audio equalizer and 3D reverb • MP3 fast forward/rewind/special playback • Playback of discs with both JPEG and MP3 tracks • Aluminium front panel



DRX-2 MKII DVD Recorder



Offering all the advantages of the DVD+RW format, the DRX-2MKII provides highest video/audio quality with the most comprehensive range of features.

- Records on DVD+RW\* and DVD+R discs\* • Linear PCM audio recording (1 and 2-hour recording modes) • 6 recording modes up to 6 hours • Fit to Space recording • Recorded discs play on nearly all DVD-Video players and DVD-ROM drivers • Digital copying from camcorder via i.LINK • Index Picture Screen shows selected scenes of all recorded segments for easy identification • Auto and Manual Chapter Marker insertion • ShowVIEW timer recording • MP3

\* DVD+R discs must be finalized to play on other DVD players.



\* Only compatible with discs that have been finalized when recording is completed. Some discs may not play due to disc characteristics or recording conditions. \*\* Only compatible with discs that have been recorded in CD-DA format or Video CD format and Super Video CD format. \*\*\* Some MP3, JPEG, DivX or WMA discs may not play due to disc characteristics or recording conditions.

## Yamaha makes it easy to get sensational home theatre sound.

If you enjoy watching movies at home, you'll enjoy them a lot more with realistic, dynamic, full-surround sound. But rather than having to select various components and worrying about which speakers will match, Yamaha Home Theatre Packages make it easy. There are six convenient packages to choose from. The AV Pack 105/205/305/505 include a high quality DVD player, and the AV Recorder Pack 405 includes DVD recorder, while the HTiB (Home Theatre in a Box) 105/205/305/405 have a powerful receiver. All come with five/six speakers and a subwoofer for full 5.1/6.1-channel sound compatibility. Best of all, each system provides Yamaha's exclusive CINEMA DSP surround sound in a variety of programmes for the ultimate in movie and music enjoyment.



## AV Pack 505



- AV Pack 505 includes
- Digital Home Theatre Receiver RX-V457 (Titanium) (see pg. 19)
  - DVD Player DVD-S557 (Titanium) (see pg. 21)
  - Digital Home Theatre Speaker Package NS-PLC3 (see pg. 30)
  - Subwoofer YST-SW011 (Silver) (see pg. 28).



## AV Recorder Pack 405



AV Recorder Pack 405T/S includes

Digital Home Theatre Receiver RX-V457 (Titanium) (see pg. 19)

DVD Recorder DRX-2MKII (Titanium) (see pg. 21)

Digital Home Theatre Speaker Package NS-P110 (Silver) (see pg. 31).

Black finish available: AV Pack 405B/B (RX-V457 Black + DRX-2MKII Black + NS-P110 Black)



## AV Pack 305



AV Pack 305T/S includes

Digital Home Theatre Receiver RX-V457 (Titanium) (see pg. 19)

DVD Player DVD-S557 (Titanium) (see pg. 21)

Digital Home Theatre Speakers NS-M125 and NS-C125 (Silver) (see pg. 28)

Subwoofer YST-SW011 (Silver) (see pg. 28).

Black finish available: AV Pack 305B/B (RX-V457 Black + DVD-S557 Black + NS-M125/NS-C125 Black + YST-SW011 Black)



## AV Pack 205



AV Pack 205S/S includes

Digital Home Theatre Receiver RX-V357 (Silver) (see pg. 19)

DVD Player DVD-S657 (Silver) (see pg. 21)

Digital Home Theatre Speaker Package NS-P240 (Silver) (see pg. 31).

Black finish available: AV Pack 205B/B (RX-V357 Black + DVD-S657 Black + NS-P240 Black)



## AV Pack 105



AV Pack 105S/S includes

Digital Home Theatre Receiver RX-V357 (Silver) (see pg. 19)

DVD Player DVD-S557 (Silver) (see pg. 21)

Digital Home Theatre Speaker Package NS-P110 (Silver) (see pg. 31).

Black finish available: AV Pack 105B/B (RX-V357 Black + DVD-S557 Black + NS-P110 Black)

## HTiB (Home Theatre in a Box)

If you love movies, you want a good quality home theatre system. Yamaha understands your situation, and came up with a terrific solution – the HTiB (Home Theatre in a Box) systems shown here. You get excellent performance, matched components, and no hassle. Start watching the movies you love – right away.



### HTiB 105



HTiB105S/S includes

Digital Home Theatre Receiver RX-V357 (Silver) (see pg. 19)  
Digital Home Theatre Speaker Package NS-P240 (Silver) (see pg. 31).

Black finish available: HTiB105B/B (RX-V357 Black + NS-P240 Black)



### HTiB 205



HTiB205T/S includes

Digital Home Theatre Receiver RX-V457 (Titanium) (see pg. 19)  
Digital Home Theatre Speakers NS-M125 and NS-C125 (Silver) (see pg. 28)  
Subwoofer YST-SW011 (Silver) (see pg. 28).

Black finish available: HTiB205B/B (RX-V457 Black + NS-M125/NS-C125 Black + YST-SW011 Black)



### HTiB 305



HTiB305T/S includes

Digital Home Theatre Receiver RX-V557 (Titanium) (see pg. 18)  
Digital Home Theatre Speaker Package NS-P430 (Silver) (see pg. 31).

Black finish available: HTiB305B/B (RX-V557 Black + NS-P430 Black)



### HTiB 405



HTiB405T/S includes

Digital Home Theatre Receiver RX-V557 (Titanium) (see pg. 18)  
Digital Home Theatre Speaker Package NS-P436 (Silver) (see pg. 31).

Black finish available: HTiB405B/B (RX-V557 Black + NS-P436 Black)

## Home theatre has evolved into an advanced species.

Home theatre has evolved into an advanced species, and it's called CinemaStation.

Elegantly very reasonable price!



### DVX-S301 DVD Home Theatre System



All-in-one surround sound home theatre system with high-performance and versatile functions, advanced DVD player, high sound quality speakers and powerful subwoofer.

- Super Audio CD and DVD-Audio playback compatibility
- Total 450W high power (75W/Ch)
- 6 Channels
- Progressive Scan (NTSC/PAL)
- 108MHz/12-bit video DAC
- 16cm Advanced YST for powerful bass response
- CD upsampling
- 192kHz/24-bit audio DAC
- 2-way satellite and centre speakers
- Magnetic shielding allows placement near a TV (all speakers)
- Versatile format and disc compatibility
- On-screen display
- MP3, JPEG, DivX and WMA multisession playback with navigation display
- Audio Delay for lip-sync
- Picture CD (such as JPEG) playback
- PAL<->NTSC conversion

[Dimensions (W x H x D); weight] • Centre unit: 360 x 53 x 310 mm; 2.7 kg • Satellite speakers (x 4): 84 x 181 x 78 mm; 0.6 kg/unit • Centre speaker: 300 x 84 x 78 mm; 1 kg • Subwoofer: 200 x 390 x 382 mm; 11.5 kg



### DVX-S302 DVD Home Theatre System



Full surround sound home theatre system with superb sound quality, top performance DVD player, and four tower speakers plus centre speaker and powerful subwoofer.

- Super Audio CD and DVD-Audio playback compatibility
- Total 450W high power (75W/Ch)
- 6 Channels
- Progressive Scan (NTSC/PAL)
- 108MHz/12-bit video DAC
- 16cm Advanced YST for powerful bass response
- CD upsampling
- 192kHz/24-bit audio DAC
- 2-way four tower satellite speakers
- Magnetic shielding allows placement near a TV (all speakers)
- Versatile format and disc compatibility
- On-screen display
- MP3, JPEG, DivX and WMA multisession playback with navigation display
- Audio Delay for lip-sync
- Picture CD (such as JPEG) playback
- PAL<->NTSC conversion

[Dimensions (W x H x D); weight] • Centre unit: 360 x 53 x 310 mm; 2.7 kg • Satellite speakers (x 4): 210 x 994 x 210 mm; 3 kg/unit • Centre speaker: 328 x 98 x 64 mm; 0.7 kg • Subwoofer: 200 x 390 x 382 mm; 11.5 kg



### DVX-S150 DVD Home Theatre System

CinemaStation [ DVR-S150 + NX-P150 ]



CinemaStation brings you top quality home theatre sound from stylishly sleek components.

#### DVR-S150

- [Receiver]
- YPAO: Automatically optimizing the sound in your room
  - 4 DSP programme icon buttons on remote unit
  - On-screen display with GUI (Graphical User Interface)
  - 6 Channels
  - 55W/Ch Yamaha original digital amplifier
  - 12 surround programmes plus SILENT CINEMA and Night Listening mode
  - Quad-Field CINEMA DSP for enjoying formats such as Dolby Digital Matrix 6.1 and DTS-ES Matrix 6.1
  - Component video output
  - 40-station FM/AM preset tuner [DVD player]
  - Progressive Scan
  - 192kHz/24-bit audio D/A conversion
  - Wide disc compatibility: DVD-Video, DVD+RW/+R, DVD-R/RW, Audio CD, CD-R/RW, VCD, SVCD, MP3 and JPEG

• Dimensions (W x H x D); weight: 360 x 80 x 360 mm; 6 kg

#### NX-P150

- [Speakers]
- 100W Advanced YST subwoofer for powerful bass response
  - Magnetic shielding allows placement near a TV (All Speakers)

[Dimensions (W x H x D); weight] • Satellite speakers (x 4): 72 x 170 x 108 mm; 0.9 kg/unit • Centre speaker: 300 x 72 x 105 mm; 1.1 kg • Subwoofer: 200 x 365 x 375 mm; 8.4 kg



#### SPS-80

Optional Speaker Stands for DVX-S150

• 300 mmφ (base), 650-900 mm (height) • 1.9 kg





## PianoCraft: Natural Sound Enjoyment from a High Performance, Elegant System.

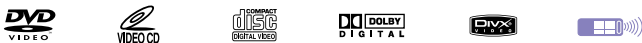
A lot of fine craftsmanship goes into Yamaha's world-renowned pianos, and that same dedication to sound and design excellence is behind the creation of the award-winning PianoCraft series. You have a choice of compact, high quality systems, each of which includes two speakers and the capability of adding a subwoofer.



The PianoCraft E100 System won the EISA award for Best Compact System 2000-2001. The prestigious EISA awards are chosen by media representatives from 19 European countries.



### PianoCraft E600MKII Micro Component System



- [Receiver: RX-E600MKII] • High output power: 60W/Ch • Linear Damping
- High Dynamic Power • Subwoofer out • Discrete amplification • Versatile timer functions • 40-station preset tuning [CD/DVD Player: DVD-E600]
- Progressive Scan (PAL/NTSC) • DVD+RW/+R, SVCD, VCD, Audio CD, CD-R/RW, and DivX, MP3 and JPEG compatibility
- Picture CD playback with display
- MP3 navigation display • MP3 and JPEG multisession compatibility
- 2-way bass-reflex speaker system



### PianoCraft E700 Micro Component System



- [RDX-E700 CD/DVD Receiver] • DivX, WMA, MP3 and JPEG multisession compatibility • Progressive Scan processing (PAL/NTSC) • Versatile format and disc compatibility • Convenient multi-jog dial • Slim loading tray • 30W x 2 high power • 30 FM/20 AM-station instant one-touch preset tuning • Subwoofer out
- [NX-E700 Speaker Systems] • 2-way bass-reflex speaker system • 11cm woofer and 2.5cm dome tweeter • 110W high power input capability



### DVD-E600 DVD Player for Combining RX-E600



- Progressive Scan (PAL/NTSC) • High quality audio DAC • DVD+RW/+R, SVCD, VCD, Audio CD, CD-R/RW, MP3 and JPEG compatibility • Picture CD playback with display • MP3 and JPEG multisession compatibility





**PianoCraft E400** Micro Component System **STEREO**



- [Receiver: RX-E400] • High power: 60W/Ch • Linear Damping • High Dynamic Power and Low-Impedance Drive Capability • Subwoofer out • Discrete amplification • Versatile timer functions
- 40-station presets • Auto preset memory [CD Player: CDX-E400] • CD-R/CD-RW playback • CD Text display • Optical digital out • 2-way bass-reflex speaker system



**PianoCraft E300** Micro Component System



- [CD Receiver: CRX-E300] • High power: 30W/Ch • Linear Damping • High Dynamic Power and Low-Impedance Drive Capability • Subwoofer out • Discrete amplification • Versatile timer functions • 40-station presets • Auto preset memory • CD-R/CD-RW playback • CD Text display • Optical digital out • 2-way bass-reflex speaker system



**PianoCraft Options**



**MDX-E300** MiniDisc Recorder



- Versatile editing functions • Digital and analogue recording level control • MDLP
- Recording mode selection • optical digital inputs (2) and output (1) • 217 x 88 x 297 mm (W x H x D); 2.6 kg



**KX-E300** Auto-Reverse Cassette Deck

- Versatile editing functions • Music search • Reverse mode selector • 4-digit tape counter
- 217 x 88 x 291 mm (W x H x D); 3 kg



**HX Series** Home Theatre Reference Speaker Systems

We developed the HX Series as a home theatre reference speaker system worthy of the Yamaha name. With a Waveguide horn for superior spatial expression, light and stiff white spruce diaphragms (WSD), 3-way mitered cabinets and more, these are the ultimate choice for top quality home theatre enjoyment.



**NS-C5HX**  
2-Way Acoustic Suspension  
Centre Speaker System



**NS-4HX**  
2-Way Dual-Woofers  
Bass-Reflex Speaker System



**NS-8HX**  
3-Way Dual-Woofers  
Bass-Reflex Speaker System

**525 A-PMD Series** Home Theatre and HiFi Speaker Systems

Designed for Natural Sound reproduction in the tradition of fine-quality Yamaha speakers. Featuring Advanced PMD cones with aluminium diecast baskets, DC Diaphragm™ tweeters and innovative cabinet technology.



**NS-C525**  
2-Way Acoustic Suspension  
Centre Speaker System



**NS-M525**  
2-Way Bass-Reflex  
Speaker System



**NS-525F**  
3-Way Bass-Reflex Tower  
Speaker System

**325 A-PMD Series** Home Theatre and HiFi Speaker Systems

High performance home theatre speakers designed for Natural Sound reproduction with Advanced PMD cones, DC Diaphragm™ tweeters, innovative cabinet technologies and luxurious wood finish.



**NS-C325**  
2-Way Acoustic Suspension  
Centre Speaker System



**NS-M325**  
2-Way Acoustic  
Suspension Speaker  
System



**NS-325F**  
2-Way Bass-Reflex Tower  
Speaker System

**Subwoofers** A Must for Home Theatre and HiFi

Full audio enjoyment of digital music and movie sources requires deep, clear bass response. Yamaha subwoofers use sophisticated technologies such as QD-Bass (down-firing drivers that radiate the sound in four directions) and Advanced YST to ensure the highest levels of sound pressure and overall performance.



**YST-SW1500**  
Advanced YST and  
QD-Bass Subwoofer



**YST-SW515**  
Advanced YST II and QD-Bass Subwoofer



**YST-SW325**  
Advanced YST II and QD-Bass Subwoofer



### YST-SW800

Advanced YST and QD-Bass Subwoofer



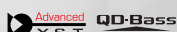
### YST-SW225

Advanced YST II and QD-Bass Subwoofer



### YST-SW011

Advanced YST and QD-Bass Subwoofer



### YST-SW030

Advanced YST and QD-Bass Subwoofer



### YST-SW015

Advanced YST and QD-Bass Subwoofer



## 225 PMD Series Home Theatre Speaker Systems

These slim, high-performance speaker systems are exactly what today's home theatre enthusiasts are looking for. Their luxurious open pore finish is matched by powerful, accurate sound reproduction from PMD cone woofers and aluminium-magnesium dome tweeters with DC-Diaphragm™ (integrated diaphragm and voice coil).



### NS-C225

2-Way Acoustic Suspension Centre Speaker System



### NS-M225

2-Way Acoustic Suspension Speaker System



### NS-225F

2-Way Bass-Reflex Speaker System



## 125 Series Home Theatre Speaker Systems

Consisting of two front tower speakers, two surround speakers and a centre speaker, the 125 Series sports thin styling to match flat TVs and plasma displays. Excellent sound quality is assured through the use of dual 8cm white cone woofers and a 2.2cm balanced dome tweeter, along with twin bass reflex ports in the tower speakers.



### NS-P125

Centre and Surround Channel Speaker Package



### NS-125F

2-Way Bass-Reflex Speaker System



### NS-CG75

2-Way Dual-Woofer Centre Speaker System



### NS-G25

2-Way Bass-Reflex Speaker System



### NS-G40MKII

2-Way, 3-Speaker Bass-Reflex Speaker System

**PLC Series** Digital Home Theatre Speaker Systems



The NS-PLC8 offers Yamaha's traditional piano finish and elegant design with bird's eye maple and dark brown cabinet.



**NS-LC8**  
3-Way Bass-Reflex Tower Speaker System

**NS-PC8**  
Centre and Surround Speaker Package



The NS-PLC5 provides front, surround and centre speakers all deliver high quality sound and are designed to match flat monitors with extruded-aluminium cabinets.



**NS-LC5**  
2-Way Acoustic Suspension Tower Speaker System

**NS-PC5**  
Centre and Surround Speaker Package



The NS-PLC3 is high quality 2-way speakers providing full, dynamic surround sound from thin, extruded-aluminium cabinets.



**NS-LC3**  
2-Way Acoustic Suspension Tower Speaker System

**NS-CLC3**  
2-Way Acoustic Suspension Speaker System for Centre Channel

**NS-ELC3**  
2-Way Acoustic Suspension Speaker System

**101 Series** Home Theatre Speaker Systems

Flat speakers complement flat screen monitors and deliver dynamic surround sound.

- Thin speakers to match plasma monitors
- 3-way acoustic suspension design
- 4 10cm cone woofers and 1.9cm soft dome tweeter
- Magnetic shielding
- MDF front baffle
- Removable grille cloth
- Optional tabletop speaker stands



**NS-F101**  
3-Way 5-Speaker Acoustic Suspension Speaker System

**NS-CF101**  
3-Way 5-Speaker Acoustic Suspension Centre Speaker System

**SPS-LF101**  
Optional Tabletop Speaker Stands  
• 260 x 338 x 260 mm (W x H x D) • 2.6 kg



**Package Speakers** Digital Home Theatre Speaker Packages

Here is a quick way to great home theatre enjoyment – buy all your speakers in one package. You get speakers that are perfectly matched for design and acoustics, at a very reasonable price!



**NS-P436**

Digital Home Theatre 6.1-Channel Speaker Package



**NS-P430**

Digital Home Theatre 5.1-Channel Speaker Package



**2.1 Stereo Set**

NS-M225 + YST-SW225

2.1-Channel Combination (Specifications are on pg.38 and pg.37)



**NS-P240**

Digital Home Theatre 5.1-Channel Speaker Package



**NS-P110**

Digital Home Theatre 5.1-Channel Speaker Package



**SPS-10MM (Silver)**

Optional Speaker Stands for NS-P436 and NS-P430

- 300 x 300 mm (base), 618-868 mm (height) • 1.6 kg

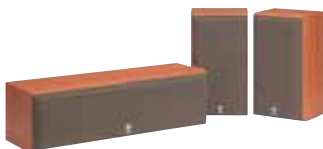
**SPS-S80**

Optional Speaker Stands for NS-P240 and NS-P110

- 300 mm  $\phi$  (base), 650-900 mm (height) • 1.9 kg

**HT Series** Home Theatre Speaker Systems

Yamaha recommends a 6.1-channel combination of the NS-50F (for front L/R), the NS-P60 (for centre and surround L/R), and the Advanced YST subwoofer. To enjoy the full dynamic potential of contemporary movies, this Yamaha combination is ideal.



**NS-P60**

Centre and Surround Channel Speaker Package



**NS-50F**

3-Way Bass-Reflex Speaker System



## Created for audio purists, by audio purists.

Anyone familiar with the Yamaha brand knows that we have always been dedicated to providing "natural sound" in its truest sense – audio reproduction that sounds as close as possible to the real thing. Given our success with other digital products and having the most advanced digital technology at hand, our engineers decided to focus on creating a truly superb digital amplifier – one that would utilize the benefits of digital technology without its drawbacks to deliver incredibly accurate and pure natural sound. The result is the MX-D1. Prepare to be amazed and delighted.



**MX-D1** Stereo Digital Power Amplifier

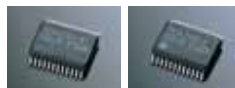
**STEREO** stereoplay

### Yamaha Digital Amplifier Technology

- Yamaha original power engine chipset: modulator LSI (YDA133) and power MOS-FET Drive LSIs (YDA134 x 2)
- Constant gain PLL modulator circuit
- Cross feedback loop circuit
- Advanced analogue feedback circuit
- Active power control system
- Magnetic coupling rectification circuit
- High-speed protection circuits
- Safety protection sequence logic
- Over-current protection
- DC detection circuit
- PWM digital drive high-efficiency power supply
- 500W/Ch output power with ultra-low (0.002%) distortion
- 4-layer Epoxy Resin coated PC board containing fiberglass with highest performance parts
- Gigantic WBT input and speaker terminals
- Discrete SEPP amplifier circuit
- Output filter (large effect on sound quality): custom-made double core, low-impedance toroidal coil and extra-large custom-made block electrolytic capacitors
- Input switch using enclosed twin cross bar relays
- High sound quality power supply electrolytic capacitors
- Extra-thick (12mm), Aluminium-extruded, Yamaha piano-finish front and side panels
- Magnetic shielding Aluminium top cover and rear panel
- Point-controlled, anti-resonance feet
- Heavy-duty copper-plated steel inner chassis

### Power Engine Chipset

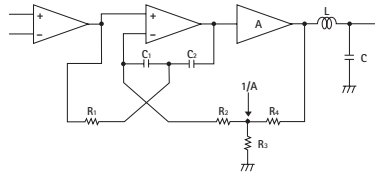
To overcome the limitations of conventional digital amplifiers, Yamaha developed its own Power Engine chipset, which enables the MX-D1 to achieve high levels of sound quality and power, as well as low power consumption and compact size.



YDA133 Modulator LSI (left) and YDA134 Power MOS-FET Drive LSI (right)

### Cross Feedback Loop Circuit

The digital pulse output is fed back by the Cross Feedback Loop, improving the linearity of the output stage and of the modulator circuit. This achieves superior low distortion characteristics and high dynamic range.



### Monaural Independent Construction

Twin monaural independent chambers provide higher efficiency and ensure that there is no chance of electronic interference degrading performance.



**Custom Installation Compatibility:** Using the MX-D1 in a custom installation is facilitated by its RS-232C interface for bi-directional control, ID setting for a multi-channel amplifier system and trigger in/out daisy chain connection for synchronized power switching via Through and Power modes.

### MX-D1 Main Specifications

**[AUDIO SECTION]** • Min. RMS output power (8/6/4 Ohms, 1 kHz, 0.1% THD): 500 W + 500 W • Dynamic power/channel: 1,000 W (2 Ohms)/1,000 W (4 Ohms)/850 W (6 Ohms)/700 W (8 Ohms) • Input sensitivity/impedance (500 W/8 Ohms, balance; unbalance): 2.2 V/10 k-Ohms, 1.3 V/25 k-Ohms • Frequency response: 1 Hz–100 kHz  $\pm 3$  dB • Total harmonic distortion (1 kHz, 10 W/8 Ohms, 20 kHz LPF): 0.002% • Signal-to-noise ratio (IHF-A-Network, S: 1.3 V, input shorted, 20 kHz LPF): 120 dB • Residual noise (IHF-A-network, 20 kHz LPF): 63  $\mu$ V • Channel separation (1 kHz, input 5.1 k-Ohms shorted): 100 dB • Muting:  $-\infty$

**[GENERAL]** • Standby power consumption: Less than 0.1 W • Dimensions (W x H x D): 435 x 75 x 437 mm • Weight: 10.4 kg



**YPC-1** Passive Controller (Option)

The YPC-1, a Passive Controller unit, provides input selection and volume control. With a black finish that matches the MX-D1, this unit is optionally available.



### YPC-1 Main Specifications

• -1dB (-100dB) gang error high quality continuously variable attenuator with brass case • Low-resistance rotary selector switch • Extra-thick 12mm Aluminium-extruded, Yamaha piano finish front and side panels • Point-controlled, anti-resonance feet • 240 x 75 x 269 mm (W x H x D) • 3.4 kg

## HiFi Components


**RX-797** *[Fi]* AM/FM Stereo Receiver

*ToP-ART* *CD Direct Amplification*

Top class stereo receiver with ToP-ART, CD Direct Amplification and Linear Damping and multi-zone control capability.

- ToP-ART • Switchable CD Direct Amplification • Super Audio CD and DVD-Audio ready • Linear Damping • High dynamic power • Multi-zone control capability with dedicated zone remote unit • Preset remote unit for main zone • Continuously variable loudness control • Subwoofer out • Remote controllable motor-driven volume control


**AX-596** *[Fi]* *ToP-ART* *CD/DVD Direct Amplification*  
Stereo Integrated Amplifier

- 155W/Ch • ToP-ART with Pure Direct • CD/DVD Direct Amplification (discrete configuration) with switch • DVD-Audio ready with extended frequency response • Continuously variable loudness control • Rec out selector • Gold-plated input terminals (all terminals)


**AX-496** *[Fi]* *ToP-ART* *CD/DVD Direct Amplification*  
Stereo Integrated Amplifier

- 120W/Ch • ToP-ART with Pure Direct • CD/DVD Direct Amplification with switch • DVD-Audio ready with extended frequency response • Continuously variable loudness control • Rec out selector • Gold-plated CD input terminal


**AX-396** *[Fi]* *ToP-ART* *CD/DVD Direct Amplification*  
Stereo Integrated Amplifier

- 95W/Ch • ToP-ART with Pure Direct • CD/DVD Direct Amplification with switch • DVD-Audio ready with extended frequency response


**RX-496RDS** *[Fi]*  
AM/FM Stereo Receiver

- 105W/Ch • Pure Direct • 5 audio inputs with 2 tape positions • 40-station AM/FM random access preset tuning • Auto FM station memory and preset editing • Direct PLL IF count synthesizer tuning


**RX-396RDS** *[Fi]*  
AM/FM Stereo Receiver

- 55W/Ch • 5 audio input with 2 tape positions • 40-station random access preset tuning • Auto FM station memory and preset editing • Direct PLL IF count synthesizer tuning


**TX-592RDS** *[Fi]*  
AM/FM Stereo Tuner

- 40-station AM/FM random access preset tuning • Auto FM station memory and preset editing • Direct PLL IF count synthesizer tuning • Absolute Linear Phase IF Amplifier circuitry • Rotary encoder tuning


**TX-492RDS** *[Fi]*  
AM/FM Stereo Tuner

- 40-station AM/FM random access preset tuning • Auto FM station memory and preset editing • Direct PLL IF count synthesizer tuning • Absolute Linear Phase IF Amplifier circuitry


**CDR-HD1500** *[Fi]* HDD + CD-R/RW Digital Audio Recorder

- Versatile, convenient, high capacity digital recording. Ideal for a variety of uses including as a high quality jukebox.
- Linear PCM 16-bit/44kHz recording (no compression) • 24-bit DAC/ADC • Audio Master Quality Recording mode (CD-R only) • CD-HDD-CD recording maintains full digital quality • 250GB hard disk drive capacity • Easy,

- extensive editing possible before recording CDs • 100 hours continuous external source recording • High-speed ripping and High-speed rec • Jog dial for fast track access • On-screen display • Synchronized rec mode • Timer rec compatibility • Title input via RS-232C interface • Time search • Copyright protection

**HOMEVISION STEREO**





## KX-493 *[HiFi]*

Stereo Cassette Deck with Play Trim

- Play trim • Auto tape tuning • Dolby B/C NR
- 160-kHz high recording bias • Dolby HX Pro Dynamic Bias Servo • Cassette stabiliser • CD-tape synchro rec start • 0-M point/full repeat
- MPX filter switch • Manual bias control



## KX-393 *[HiFi]*

Stereo Cassette Deck with Play Trim

- Play trim • Auto tape tuning • Dolby B/C NR
- Dolby HX Pro Dynamic Bias Servo • Cassette stabiliser • CD-tape synchro rec start • 0-M point/full repeat • MPX filter switch • Manual bias control



## KX-W321 *[HiFi]*

Double Auto-Reverse Cassette Deck

- Two speed (normal/high) dubbing • Dolby B/C NR • Relay play • Yamaha GF heads • Auto tape type selection • 4-digit tape counters (both decks)



## CDX-596 *[HiFi]*



CD Player with PRO-Bit

- PRO-BIT technology • CD-R/CD-RW playback capability • Intelligent digital servo • CD-tape synchro rec start • 3-mode CD text display • Peak search for setting the recording level properly • 3-way tape edit • 40-track programmable play • Optical digital output • 4-mode time display • Fine sound tuning • Space insert



## CDX-496 *[HiFi]*

CD Player with Peak Search

- CD-R/CD-RW playback capability • Intelligent digital servo • CD-tape synchro rec start • Peak search for setting the recording level properly • 3-way tape edit • 40-track programmable play • Optical digital output • 4-mode time display • Space insert



## CDX-396 *[HiFi]*

CD Player with Optical Digital Out

- CD-R/CD-RW playback capability • Intelligent digital servo • CD-tape synchro rec start • Peak search for setting the recording level properly • 3-way tape edit • 40-track programmable play • Optical digital output for sending the digital signal directly to a MD recorder • 4-mode time display



## CDC-685 *[HiFi]*



CD Changer Plus PlayXchange

- Yamaha patented PlayXchange • CD-R/CD-RW playback compatibility • Intelligent digital servo • CD-tape synchro rec start • 3-mode CD Text display • Peak search for setting the recording level properly • 3-way tape edit • 40-track programmable play • Disc (intro) scan • Optical digital output • 4-mode time display



## CDC-585



CD Changer Plus PlayXchange

- Yamaha patented PlayXchange • CD-R/CD-RW playback compatibility • Intelligent digital servo • CD-tape synchro rec start • Disc (intro) scan • 3-mode CD Text display • 3-way tape edit • 40-track programmable play • Optical digital output • 4-mode time display



## MDX-596 *[HiFi]*



MiniDisc Recorder

- Digital recording level control with memory • 20-bit A/D and D/A conversion • 24-bit quantization system • Optical digital input (2) and output terminals • Super Bit Allocation (SBA) • Automatic synchro sampling rate conversion • Versatile edit functions • Convenient titling • Time rescue rec • Synchro rec

## HiFi Packages

	Receiver	CD Player	Cassette Deck	Speaker
HiFi Pack 1	RX-396RDS	CDX-396		NS-G40MKII
HiFi Pack 2	RX-396RDS	CDX-496	KX-493	NS-G40MKII
HiFi Pack 3	RX-396RDS	CDX-496	KX-W321	NS-G40MKII
StereoPack104	RX-396RDS	CDX-396		NS-M515



Specifications

• Home Theatre Component Surround Programmes

		DSP-Z9	RX-V4600	RX-V2600	RX-V1600	RX-V757	RX-V657	RX-V557	RX-V457	RX-V357	RX-V100D
<b>Compatible Decoding Formats</b>											
	Dolby Digital	●	●	●	●	●	●	●	●	●	●
	Dolby Digital EX	●	●	●	●	●	●	●	●	●	●
	DTS Digital Surround	●	●	●	●	●	●	●	●	●	●
	DTS 96/24	●	●	●	●	●	●	●	●	●	●
	DTS-ES Matrix 6.1	●	●	●	●	●	●	●	●	●	●
	DTS 96/24 ES (6.1)	●									
	DTS-ES Discrete 6.1	●	●	●	●	●	●	●	●	●	●
	Dolby Pro Logic	●	●	●	●	●	●	●	●	●	●
	Dolby Pro Logic II Music	●	●	●	●	●	●	●	●	●	●
	Dolby Pro Logic II Movie	●	●	●	●	●	●	●	●	●	●
	Dolby Pro Logic II Game	●	●	●	●	●	●	●	●	●	●
	Dolby Pro Logic IIx Music	●	●	●	●	●	●	●	●	●	●
	Dolby Pro Logic IIx Movie	●	●	●	●	●	●	●	●	●	●
	Dolby Pro Logic IIx Game	●	●	●	●	●	●	●	●	●	●
	DTS Neo:6 Music	●	●	●	●	●	●	●	●	●	●
	DTS Neo:6 Cinema	●	●	●	●	●	●	●	●	●	●
<b>HiFi DSP Programmes</b>											
HALL	Munich A	●	●	●							
	Frankfurt	●									
	Stuttgart	●									
	Munich B	●									
	Vienna	●	●	●	●						●
	Amsterdam	●									
	Hall G in U.S.A	●									
	Hall H in USA	●									
	Live Concert	●				●	●	●	●	●	
CHURCH	Tokyo	●									
	Freiburg	●	●	●							
	Royaumont	●									
JAZZ CLUB	Village Gate	●									
	Village Vanguard	●									
	The Bottom Line	●	●	●	●	●	●	●	●	●	●
ROCK CONCERT	The Roxy Theatre	●	●	●	●	●	●	●	●	●	●
	Warehouse Loft	●									
	Arena	●									
CLASSICAL/OPERA	Classical/Opera	●									
	Disco	●	●	●	●	●	●	●	●	●	●
ENTERTAINMENT	Party	●									
STEREO	9 Ch Stereo	●	● (7 Ch Stereo)	● (7 Ch Stereo)	● (7 Ch Stereo)	● (7 Ch Stereo)	● (7 Ch Stereo)	● (6 Ch Stereo)	● (6 Ch Stereo)	● (5 Ch Stereo)	● (6 Ch Stereo)
<b>HiFi DSP Subtotal</b>		<b>21</b>	<b>7</b>	<b>7</b>	<b>5</b>	<b>5</b>	<b>5</b>	<b>5</b>	<b>5</b>	<b>5</b>	<b>5</b>
<b>CINEMA DSP Programmes</b>											
ENTERTAINMENT	Game	●	●	●	●	●	●	●	●	●	●
	TV Sports	●	● (Variety/Sports)	● (Variety/Sports)	● (Variety/Sports)	● (Variety/Sports)	● (Variety/Sports)	● (Variety/Sports)	● (Variety/Sports)	● (Variety/Sports)	● (Variety/Sports)
	Mono Movie	●	●	●	●	●	●	●	●	●	●
MUSIC	Pop/Rock	●	●	●	●	●	●	●	●	●	●
	DJ	●									
	Classical/Opera	●	●	●							
MOVIE THEATER	Pavilion	●									
	Spectacle	●	●	●	●	●	●	●	●	●	●
	Sci-Fi	●	●	●	●	●	●	●	●	●	●
	Adventure	●	●	●	●	●	●	●	●	●	●
	General	●	●	●	●	●	●	●	●	●	●
STANDARD	Enhanced	●	●	●	●	●	●	●	●	●	
<b>CINEMA DSP Subtotal</b>		<b>12</b>	<b>10</b>	<b>10</b>	<b>9</b>	<b>9</b>	<b>9</b>	<b>9</b>	<b>9</b>	<b>9</b>	<b>9</b>
<b>THX Programmes</b>											
THX Programme Subtotal	Cinema	●	●	●	●						
	Ultra2 Cinema	●									
	Select2 Cinema		●	●	●						
	Music Mode	●	●	●	●						
	Game Mode		●	●	●						
	ES Matrix 6.1	●									
	ES Discrete 6.1	●									
	Surround EX	●	●	●	●						
<b>THX Programme Subtotal</b>		<b>6</b>	<b>5</b>	<b>5</b>	<b>5</b>						
<b>Programme Total</b>		<b>39</b>	<b>22</b>	<b>22</b>	<b>19</b>	<b>14</b>	<b>14</b>	<b>14</b>	<b>14</b>	<b>14</b>	<b>14</b>

● : HiFi DSP Programmes    ● : CINEMA DSP    ● : Tri-Field CINEMA DSP Capable    ● : Quad-Field CINEMA DSP Capable    ● : THX Programmes

Digital Sound Projectors	YSP-1000	YSP-800
Speakers Section	4cm x 40 beam drivers and 11cm x 2 woofers	4cm x 21 beam drivers and 10cm x 2 woofers
Digital Amplifier	120 W total power: 2 W x 40 + 20 W x 2	82 W total power: 2 W x 21 + 20 W x 2
Dimensions (W x H x D)	1,030 x 194 x 118 mm	800 x 153 x 115 mm
Weight	13 kg	9 kg

Plasma Display Monitor	PDM-4220		
Effective Display Area (H x V)	922mm x 522mm, 1,060mm diagonal	Surround Sound	SRS TruBass/Matrix Surround
Aspect Ratio	16 : 9	Sound mode	4 (Movie, Music, Speech, Favorite)
Number of Pixels (H x V)	1,024 x 1,024 pixels (ALIS method panel)	Audio Power (RMS)	12 W + 12 W
Pixel Pitch (H x V)	0.90 x 0.51 mm	Side by Side Picture	Tuner and AV input
Number of Colours	Gray Levels	Wide Mode (Picture Size)	TV/Video (8 modes): Panoramic, Zoom, Cinema, Full, 4:3, 14:9L, 14:9Zoom, 14:9 (WSS available)
Transmission of Front Filter	Dark tint face 32%		PC (6 modes): Full, Real, Normal, Zoom1, Zoom2, Zoom3
Brightness	White Peak	Power Consumption	365 W
	Panel brightness : 1,100 cd/m <sup>2</sup>	Dimensions (W x H x D)	1,030 x 636 x 93 mm (monitor only)
Contrast Ratio (Panel)	1,000:1	Weight	35.2 kg (monitor only)
Acceptable Input	YPbPr		
	480i/480p, 576i/576p, 720p, 1035i, 1080i	YWB-4210 Dimensions (W x H x D)	1,095 x 695 x 37 mm;
	RGB	YWB-4210 Weight	4 kg
	Colour Format		
	NTSC, PAL, SECAM, PAL60 and Modified NTSC		
Picture Mode	2 (Dynamic, Natural)		
White Balance	4 (Cool, Normal, Warm, Black-White)		

Video Projectors	DPX-1300	DPX-530
Panel	0.8 inch DMD™ 720P DarkChip3™ x1	0.65 inch DMD™ x 1 (aspect ratio: 16:9)
Resolution	1,280 x 720 pixels	1,024 x 576 pixels
Brightness	800 ANSI lumens (maximum)	1,500 ANSI lumens (maximum)
Contrast Ratio	5,000:1 (maximum)	4,000:1 (maximum)
Projection Distance	3 – 4.8 m @ 100" 16: 9 screen	3.6 – 4.7 m @ 100" 16: 9 screen
Lamp	270 W SHP	250 W
Acceptable Input	YPbPr	
	480i, 576i, 480p, 576p, 720p (50/60 Hz), 1080i (50/60 Hz)	480i, 576i, 480p, 576p, 720p (50/60Hz), 1080i (50/60 Hz)
Colour Format	NTSC, PAL, SECAM, NTSC4.43, PAL60, PAL-M and PAL-N	NTSC, PAL, SECAM, NTSC4.43, PAL60, PAL-M and PAL-N
Power Consumption	395 W (standby: 0.1 W)	340 W (standby 7 W)
Dimensions (W x H x D); Weight	495 x 192.6 x 465.4 mm; 14 kg	360 x 102 x 290 mm; 3.9 kg

A/V Amplifier / Receivers	DSP-Z9	RX-V4600	RX-V2600	RX-V1600		RX-SL80
Output Power (4 Ohms, 1 kHz, 0.7% THD)						(6 ohms, 1 kHz, 10% THD)
Front Channels	300 W + 300 W	190 W + 190 W	190 W + 190 W	170 W + 170 W		100 W + 100 W
Centre Channel	300 W	190 W	190 W	170 W		100 W
Surround Channels	300 W + 300 W	190 W + 190 W	190 W + 190 W	170 W + 170 W		100 W + 100 W
Surround Back Channels	300 W + 300 W	190 W + 190 W	190 W + 190 W	170 W + 170 W		
Presence Channels	90 W + 90 W					
High Dynamic Power & Low Impedance Drive Capability	Yes	Yes	Yes	Yes		
Dynamic Power/Ch (Front Ch, 8/6/4/2 Ohms)	210/260/340/580 W	165/205/260/340 W	165/205/260/340 W	155/195/250/330 W		
Linear Damping [Damping Factor (8 Ohms, 20 Hz-20 kHz)]	200 (front/centre)	140 (front, speaker A)	140 (front, speaker A)	140 (front, speaker A)		
Frequency Response (CD)	10 Hz-100 kHz +0, -3 dB	10 Hz-100 kHz +0, -3 dB	10 Hz-100 kHz +0, -3 dB	10 Hz-100 kHz +0, -3 dB		20 Hz-50 kHz +0, -3 dB
Total Harmonic Distortion (20 Hz-20 kHz, CD)	0.005% (85 W/8 Ohms)	0.04% (65 W/8 Ohms)	0.04% (65 W/8 Ohms)	0.04% (60 W/8 Ohms)		0.04% (35 W/6 Ohms)
Signal-to-Noise Ratio (IHF-A-Network, CD)	100 dB (250 mV)	100 dB (250 mV)	100 dB (250 mV)	100 dB (250 mV)		100 dB (250 mV)
Full Analogue Video Up-Conversion to HDMI			Yes	Yes		
De-Interlacing			Yes	Yes		
Up-Scaling to HDMI			Yes			
Component Video Up-Conversion	Yes (up/down, full digital)	Yes	Yes	Yes		
Monitor Out Frequency Response (Component Video)	5 Hz-100 MHz -3 dB	5 Hz-60 MHz -3 dB	5 Hz-100 MHz ±3 dB	5 Hz-100 MHz ±3 dB		
FM 50 dB Quieting Sensitivity (IHF, 75 Ohms, Mono/Stereo)		2 µV (17.3 dBf)/25 µV (39.2 dBf)	2 µV (17.3 dBf)/25 µV (39.2 dBf)	2 µV (17.3 dBf)/25 µV (39.2 dBf)		2.8 µV (20.2 dBf)/-
FM Signal-to-Noise Ratio (Mono/Stereo)		76 dB/70 dB	76 dB/70 dB	76 dB/70 dB		
Dimensions (W x H x D)	435 x 211 x 471 mm	435 x 171 x 439 mm	435 x 171 x 438 mm	435 x 171 x 438 mm		435 x 55.5 x 330 mm
Weight	30 kg	18 kg	17.4 kg	17.4 kg		6.4 kg

A/V Receivers	RX-V757	RX-V657	RX-V557	RX-V457	RX-V357	RX-V100D
Output Power (4 Ohms, 1 kHz, 0.7% THD)						
Front Channels	150 W + 150 W	145 W + 145 W	135 W + 135 W	130 W + 130 W	105 W + 105 W	130 W + 130W
Centre Channel	150 W	145 W	135 W	130 W	105 W	130 W
Surround Channels	150 W + 150 W	145 W + 145 W	135 W + 135 W	130 W + 130 W	105 W + 105 W	130 W + 130W
Surround Back Channels	150 W + 150 W	145 W + 145 W	135 W	130 W		130 W
High Dynamic Power & Low Impedance Drive Capability	Yes	Yes	Yes	Yes	Yes	Yes
Dynamic Power/Ch (Front Ch, 8/6/4/2 Ohms)	135/170/200/245 W	130/165/195/240 W	120/155/190/235 W	115/150/185/230 W	105/135/165 W (6/4/2 Ohms)	115/150/185/230 W
Linear Damping [Damping Factor (8 Ohms, 20 Hz-20 kHz)]	120 (front, speaker A)	120 (front, speaker A)	120 (front, speaker A)	120 (front, speaker A)		120 (front, speaker A)
Frequency Response (CD)	10 Hz-100 kHz +0, -3 dB	10 Hz-100 kHz +0, -3 dB	10 Hz-100 kHz +0, -3 dB	10 Hz-100 kHz +0, -3 dB	10 Hz-100 kHz +0, -3 dB	10 Hz-100 kHz +0, -3 dB
Total Harmonic Distortion (20 Hz-20 kHz, CD)	0.06% (50 W/8 Ohms)	0.06% (50 W/8 Ohms)	0.06% (40 W/8 Ohms)	0.06% (40 W/8 Ohms)	0.06% (50 W/6 Ohms)	0.06% (40 W/8 Ohms)
Signal-to-Noise Ratio (IHF-A-Network, CD)	100 dB (250 mV)	100 dB (250 mV)	100 dB (250 mV)	100 dB (250 mV)	100 dB (250 mV)	100 dB (250 mV)
Component Video Up-Conversion	Yes	Yes	Yes			
Monitor Out Frequency Response (Component Video)	5 Hz-60 MHz -3 dB	5 Hz-60 MHz -3 dB	5 Hz-60 MHz -3 dB	5 Hz-60 MHz -3 dB	5 Hz-60 MHz -3 dB	5 Hz-60 MHz -3 dB
DAB Total Harmonic Distortion						0.005%
DAB Signal-to-Noise Ratio						97 dB
FM 50 dB Quieting Sensitivity (IHF, 75 Ohms, Mono/Stereo)	2 µV (17.3 dBf)/25 µV (39.2 dBf)	2 µV (17.3 dBf)/25 µV (39.2 dBf)	2 µV (17.3 dBf)/25 µV (39.2 dBf)	2 µV (17.3 dBf)/25 µV (39.2 dBf)	2.8 µV (20.2 dBf)/-	2 µV (17.3 dBf)/25 µV (39.2 dBf)
FM Signal-to-Noise Ratio (Mono/Stereo)	76 dB/70 dB	76 dB/70 dB	76 dB/70 dB	76 dB/70 dB	76 dB/70 dB	76 dB/70 dB
Dimensions (W x H x D)	435 x 171 x 420 mm	435 x 171 x 420 mm	435 x 171 x 420 mm	435 x 161 x 416 mm	435 x 151 x 315 mm	435 x 171 x 416 mm
Weight	12.5 kg	12.5 kg	11 kg	11 kg	9 kg	11 kg

## • Digital Home Theatre Component Inputs/Outputs

	DSP-Z9	RX-V4600	RX-V2600	RX-V1600	RX-V757	RX-V657	RX-V557	RX-V457	RX-V357	RX-V100D	RX-SL80	
Inputs	Optical Digital (Fixed & Assignable)	8*	5*	5*	5*	5*	4*	3	3	2	3	3*
	Coaxial Digital (Fixed & Assignable)	3	3	3	3	2	2	1	1	1	1	
	S-Video	8*	6*	6*	6*	5*	5*	3	3		3	
	Pure Direct 2Ch	1										
	Analogue A/V / Audio	8* / 5	6* / 4	6* / 4	6* / 4	5* / 3	5* / 2	4* / 2	4* / 2	4 / 2	4* / 2	1* / -
	Component Video (Fixed & Assignable)	6	3	3	3	2	2	2	2	2	2	2
	Multichannel External Decoder	8ch	8ch	8ch	8ch	8ch	8ch	6ch	6ch	6ch	6ch	6ch
YPAO Microphone	1	1	1	1	1							
Outputs	Optical Digital (Fixed & Assignable)	3	2		2	1	1	1				
	S-Video	3	2	2	2	2	1	1		1		
	Component / S-Video / Composite Monitor	2 / 2 / 2	1 / 1 / 1	1 / 1 / 1	1 / 1 / 1	1 / 1 / 1	1 / 1 / 1	1 / 1 / 1	1 / 1 / 1	1 / - / 1	1 / 1 / 1	- / - / 1
	Speaker (without Subwoofer)	9	9	9	9	9	6	6	5	6	5	
	Subwoofer	2	1	1	1	1	1	1	1	1	1	
	i.LINK	2	2									
	Zone2	Coaxial / 1	S-Video / 1	S-Video / 1	1	1	1	1				
	Zone3		1	1	1							
	Trigger	2	2	2	2	1	1	1				
	HDMI Interface (Input / Output)		2 / 1	2 / 1	2 / 1							
I/O	RS-232C Interface	1	1	1	1							
	IR Ports	2	2	1	1	1	1					
	DAB Antenna Terminal									1		
	Terminal for Detachable Power Cable	1	1	1	1							

\* Including front panel Video Aux terminals

	DVD-S2500	DVD-S1500	DVD-S657	DVD-S557	DV-SL100	DRX-2MKII
DVD Players / DVD Recorder						
Super Audio CD / DVD-Audio Playback	Yes	Yes	Yes			
MP3 / JPEG Playback	Multisession	Multisession	Multisession	Multisession	Multisession	
DivX / WMA Playback			Multisession	Multisession		
DVD+R DL Playback			Yes	Yes		
VR format recorded DVD-RW Playback			Yes	Yes		
Video D/A Converter	216 MHz/12-bit	108 MHz/12-bit	108 MHz/12-bit	108 MHz/12-bit	54 MHz/12-bit	10-bit
Audio D/A Converter	192 kHz/24-bit	192 kHz/24-bit	192 kHz/24-bit	192 kHz/24-bit	192 kHz/24-bit	24-bit
Signal-to-Noise Ratio (CD)	115 dB	115 dB	105 dB	105 dB	105 dB	
Frequency Response (CD/VCD)	2 Hz-20 kHz	2 Hz-20 kHz	2 Hz-20 kHz	2 Hz-20 kHz	2 Hz-20 kHz	4 Hz-20 kHz
(DVD 96 kHz sampling)	2 Hz-44 kHz	2 Hz-44 kHz	2 Hz-44 kHz	2 Hz-44 kHz	2 Hz-44 kHz	4 Hz-44 kHz
Dynamic Range (DVD 48 kHz, 24 Bit)	107 dB	107 dB	100 dB	100 dB	100 dB	
Harmonic Distortion + Noise (1 kHz)	0.0015%	0.0017%	0.003%	0.003%	0.003%	
Dimensions (W x H x D)	435 x 100 x 314 mm	435 x 55 x 315 mm	435 x 51 x 310 mm	435 x 55 x 310 mm	435 x 55 x 310 mm	435 x 82 x 347 mm
Weight	5.6 kg	3.2 kg	2.6 kg	2.6 kg	3.2 kg	4 kg

	PianoCraft E600MKII	PianoCraft E700	PianoCraft E400	PianoCraft E300
PianoCraft				
Receiver	RX-E600MKII Receiver	RDX-E700 CD/DVD Receiver	RX-E400 Receiver	CRX-E300 CD Receiver
Output Power (4 Ohms, 1 kHz, 0.7% THD)	60 W/Ch	30 W/Ch	60 W/Ch	30 W/Ch
Linear Damping [Damping Factor (6 Ohms, 20 Hz-20 kHz)]	Yes (60)		Yes (60)	Yes (60)
Dynamic Power/Channel	60/75/100 W (6/4/2 Ohms)		60/75/100 W (6/4/2 Ohms)	35/40/45 W (6/4/2 Ohms)
Dimensions (W x H x D); Weight	217 x 108 x 372 mm; 5.4 kg	215 x 113 x 270 mm; 2.65 kg	217 x 108 x 372 mm; 5.4 kg	217 x 168 x 312 mm; 5 kg
CD / DVD Player	DVD-E600 CD/DVD Player		CDX-E400 CD Player	
Harmonic Distortion + Noise	0.003%	0.007%	0.004%	0.006%
Signal-to-Noise Ratio	105 dB	95 dB	102 dB	100 dB
Dynamic Range	100 dB		95 dB	96 dB
Dimensions (W x H x D); Weight	217 x 108 x 346 mm; 2.5 kg		217 x 108 x 345 mm; 3 kg	
Speaker System	NX-E400 Speaker System	NX-E700 Speaker System	NX-E400 Speaker System	NX-E300 Speaker System
Woofer	13cm cone woofer	11 cm cone woofer	13 cm cone woofer	11 cm cone woofer
Tweeter	2.5cm dome tweeter	2.5 cm dome	2.5 cm dome tweeter	2.5 cm dome tweeter
Input Power (Max/Nominal)	110 W/60 W	110 W/60 W	110 W/60 W	110 W/40 W
Frequency Response	55 Hz-28 kHz	60 Hz-28 kHz	55 Hz-28 kHz	60 Hz-28 kHz
Selectivity	87 dB/2.83 V/1 m	85 dB/2.83 V/1 m	87 dB/2.83 V/1 m	85 dB/2.83 V/1 m
Dimensions (W x H x D); Weight/per unit	186 x 300 x 223 mm; 4.3 kg	165 x 255 x 183 mm; 3.4 kg	186 x 300 x 223 mm; 4.3 kg	165 x 255 x 183 mm; 3.4 kg

	YST-SW1500	YST-SW800	YST-SW515	YST-SW325	YST-SW225	YST-SW015	YST-SW030	YST-SW011
Subwoofers								
Advanced YST	Yes	Yes	Advanced YST II	Advanced YST II	Advanced YST II	Yes	Yes	Yes
QD-Bass Technology	Yes	Yes	Yes	Yes	Yes	Yes	Yes	Yes
High-Efficiency Power Amplifier	Yes	Yes	Yes	Yes	Yes			Yes
High-Efficiency Power Supply	Yes	Yes	Yes					
Drivers	30 cm extra-long stroke design with dual-bias system	25 cm extra-long stroke design with dual-bias system	25cm cone	20 cm cone	20 cm cone	16 cm cone	20 cm cone	20 cm cone
Magnetic Shielding	Yes	Yes	Yes	Yes	Yes	Yes	Yes	
High Cut Filter (continuously variable)	40-140 Hz	40-140 Hz	40-140 Hz	40-140 Hz	40-140 Hz	50-150 Hz	40-140 Hz	40-140 Hz
Linear Port for Minimizing Extraneous Noise			Yes	Yes	Yes			Yes
BASS (Bass Action Selector System)	Yes	Yes	Yes	Yes	Yes	Yes	Yes	Yes
Output Power	1,000 W (5 ohms)	800 W (6 ohms)	250 W (5 ohms)	150 W (5 ohms)	120 W (5 ohms)	70 W (5 ohms)	75 W (5 ohms)	50 W (5 ohms)
Dynamic Power	1,000 W	800 W	270 W	170 W	150 W	120 W	130 W	100 W
Frequency Response	16-160 Hz	18-160 Hz	20-160 Hz	25-180 Hz	28-200 Hz	30-200 Hz	28-200 Hz	30-200 Hz
Dimensions (W x H x D)	420 x 511 x 448 mm	390 x 482 x 420 mm	350 x 430 x 382 mm	315 x 380 x 374 mm	290 x 350 x 349 mm	280 x 325 x 320 mm	290 x 360 x 311 mm	290 x 360 x 303 mm
Weight	29 kg	24 kg	19 kg	13 kg	11.5 kg	9.2 kg	10 kg	10 kg

## • Digital Home Theatre Speaker Systems

NS-HX-Series	NS-8HX	NS-4HX	NS-C5HX
Woofers	Dual 20cm WSD cone	Dual 13cm WSD cone	Dual 13cm WSD cone
Midrange Driver with Waveguide horn	13cm WSD cone		
Tweeter with Waveguide horn	3cm aluminium dome	3cm aluminium dome	3cm aluminium dome
Input Power (Max/Nominal)	400 W/140 W	300 W/100 W	300 W/100 W
Sensitivity	92 dB/2.83 V/1 m	91 dB/2.83 V/1 m	91 dB/2.83 V/1 m
Frequency Response	35 Hz-50 kHz	55 Hz-50 kHz	55 Hz-50 kHz
Impedance	6 ohms	6 ohms	6 ohms
Dimensions (W x H x D)	364 x 1,102 x 397 mm	186 x 500 x 257 mm	500 x 186 x 257 mm
Weight	32.5 kg/unit	11.5 kg/unit	11.5 kg

PMD-525-Series	NS-525F	NS-M525	NS-C525
Woofers	16cm Advanced PMD cone	13cm Advanced PMD cone	Dual 13cm Advanced PMD cone
Midrange Driver	16cm Advanced PMD cone		
Tweeter	3cm aluminium dome	3cm aluminium dome	3cm aluminium dome
Input Power (Max/Nominal)	200 W/45 W	120 W/30 W	200 W/45 W
Sensitivity	89 dB/2.83 V/1 m	89 dB/2.83 V/1 m	89 dB/2.83 V/1 m
Frequency Response	35 Hz-50 kHz	60 Hz-50 kHz	57 Hz-50 kHz
Impedance	6 ohms	6 ohms	6 ohms
Dimensions (W x H x D)	200 x 1,000 x 360 mm	176 x 323 x 193 mm	500 x 170 x 227 mm
Weight	23 kg/unit	4.5 kg/unit	7.4 kg

PMD-325-Series	NS-325F	NS-M325	NS-C325
Woofers	Dual 13cm Advanced PMD cone	10cm Advanced PMD cone	Dual 10cm Advanced PMD cone
Tweeter	3cm aluminium dome	3cm aluminium dome	3cm aluminium dome
Input Power (Max/Nominal)	200 W/50 W	120 W/30 W	200 W/50 W
Sensitivity	88 dB/2.83 V/1 m	89 dB/2.83 V/1 m	86 dB/2.83 V/1 m
Frequency Response	40 Hz-50 kHz	65 Hz-50 kHz	60 Hz-50 kHz
Impedance	6 ohms	6 ohms	6 ohms
Dimensions (W x H x D)	180 x 970 x 308 mm	176 x 323 x 193 mm	430 x 140 x 203 mm
Weight	16 kg/unit	4.5 kg/unit	5.4 kg

	NS-225F	NS-M225	NS-C225
Woofers	Dual 8cm PMD cone	Dual 8cm PMD cone	Quad 6.5cm PMD cone
Tweeter	3cm aluminium-magnesium dome	3cm aluminium-magnesium dome	3cm aluminium-magnesium dome
Input Power (Max/Nominal)	120 W/40 W	120 W/40 W	120 W/40 W
Frequency Response	60 Hz-50 kHz	65 Hz-50 kHz	65 Hz-50 kHz
Sensitivity	86 dB/2.83 V/1 m	86 dB/2.83 V/1 m	86 dB/2.83 V/1 m
Impedance	6 ohms	6 ohms	6 ohms
Dimensions (W x H x D)	236 x 1,050 x 236 mm	107 x 360 x 134 mm	440 x 94 x 133 mm
Weight	7.7 kg/unit	2.4 kg/unit	2.8 kg

	NS-125F	NS-P125 (Surround)	NS-P125 (Centre)
Woofers	Dual 8cm white cone	Dual 8cm white cone	Dual 8cm white cone
Tweeters	2.2cm balanced-dome	2.2cm balanced-dome	2.2cm balanced-dome
Input Power (Max/Nominal)	120 W/40 W	120 W/40 W	120 W/40 W
Frequency Response	60 Hz-35 kHz	70 Hz-35 kHz	70 Hz-35 kHz
Sensitivity	86 dB/2.83 V/1 m	86 dB/2.83 V/1 m	86 dB/2.83 V/1 m
Impedance	6 ohms	6 ohms	6 ohms
Dimensions (W x H x D)	236 x 1,050 x 236 mm	105 x 340 x 133 mm	340 x 105 x 132 mm
Weight	7.2 kg/unit	2 kg/unit	2 kg

	NS-G40MKII	NS-G25	NS-CG75
Woofers	Dual 16cm cone	11cm cone	Dual 10cm cone
Tweeter	2.5cm dome	2.5cm dome	2.5cm dome
Magnetic Shielding			Yes
Input Power (Max/Nominal)	120 W/60 W	60 W/40 W	80 W/40 W
Sensitivity	90 dB/2.83 V/1 m	88 dB/2.83 V/1 m	88 dB/2.83 V/1 m
Frequency Response	35 Hz-20 kHz	70 Hz-20 kHz	65 Hz-20 kHz
Impedance	4 ohms	4 ohms	4 ohms
Dimensions (W x H x D)	220 x 900 x 265 mm	165 x 200 x 123 mm	446 x 150 x 140 mm
Weight	12.6 kg/unit	2.8 kg/unit	4.5 kg

	NS-F101	NS-CF101	NS-50F
Woofers	Quad 10cm cone	Quad 10cm cone	Dual 16cm cone
Tweeter	1.9cm soft-dome	1.9cm soft-dome	3cm dome
Input Power (Max/Nominal)	120 W/35 W	120 W/35 W	240 W/80 W
Sensitivity	83 dB/2.83 V/1 m	83 dB/2.83 V/1 m	90 dB/2.83 V/1 m
Frequency Response	35 Hz-35 kHz	35 Hz-35 kHz	35 Hz-35 kHz
Impedance	6 ohms	6 ohms	6 ohms
Dimensions (W x H x D)	187 x 605 x 99 mm	605 x 187 x 99 mm	233 x 880 x 271 mm
Weight	3.6 kg/unit	3.6 kg	12.5 kg/unit

	NS-P436	NS-P430
System Frequency Response	30 Hz-60 kHz	30 Hz-60 kHz
Magnetic Shielding	Yes (all speakers)	Yes (all speakers)
Impedance	6 ohms*	6 ohms*
<b>Satellite Speakers</b>	5 satellites	4 satellites
Type	2-way acoustic suspension	2-way acoustic suspension
Input Power (Max/Nom)	100 W/30 W	100 W/30 W
Dimensions (W x H x D)	87 x 184 x 147 mm	87 x 184 x 147 mm
Weight/Unit	1.2 kg	1.2 kg
<b>Centre Speaker</b>	2-way acoustic suspension	2-way acoustic suspension
Input Power (Max/Nom)	100 W/30 W	100 W/30 W
Dimensions (W x H x D)	273 x 81 x 147 mm	273 x 81 x 147 mm
Weight	1.7 kg	1.7 kg
<b>Subwoofer</b>	Advanced YST and QD-Bass	Advanced YST and QD-Bass
Output Power	70 W (5 ohms)	70 W (5 ohms)
Dynamic Power	120 W	120 W
Dimensions (W x H x D)	280 x 325 x 320 mm	280 x 325 x 320 mm
Weight	9.2 kg	9.2 kg

\* Except subwoofer

	NS-P240	NS-P110
System Frequency Response	30 Hz-25 kHz	30 Hz-25 kHz
Magnetic Shielding	Yes (all speakers)	Yes (all speakers)
Impedance	6 ohms*	6 ohms*
<b>Satellite Speakers</b>	4 satellites	4 satellites
Type	Full-range dual cone acoustic suspension	Full-range dual cone acoustic suspension
Input Power (Max/Nom)	100 W/30 W	100 W/30 W
Dimensions (W x H x D)	72 x 170 x 108 mm	72 x 164 x 111 mm
Weight/Unit	0.9 kg	0.9 kg
<b>Centre Speaker</b>	Full-range dual cone acoustic suspension	Full-range dual cone acoustic suspension
Input Power (Max/Nom)	100 W/30 W	100 W/30 W
Dimensions (W x H x D)	300 x 72 x 105 mm	300 x 72 x 110 mm
Weight	1.1 kg	1.1 kg
<b>Subwoofer</b>	Advanced YST	Advanced YST
Output Power (RMS)	50 W (5 ohms)	50 W (5 ohms)
Dynamic Power	100 W	100 W
Dimensions (W x H x D)	200 x 365 x 390 mm	200 x 365 x 375 mm
Weight	8.4 kg	8.5 kg

\* Except subwoofer

	NS-P60
System Frequency Response	70 Hz-30 kHz
Magnetic Shielding	Yes (all speakers)
Impedance	6 ohms
<b>Satellite Speakers</b>	2 satellites
Type	2-way acoustic suspension
Input Power (Max/Nom)	150 W/50 W
Dimensions (W x H x D)	150 x 265 x 156 mm
Weight/Unit	2.2 kg
<b>Centre Speaker</b>	2-way acoustic suspension
Input Power (Max/Nom)	180 W/60 W
Dimensions (W x H x D)	465 x 135 x 174 mm
Weight	3.5 kg

● All speaker systems (except NS-G40MKII and NS-G25) in this page are magnetic shielding.

PCL-8-Series	NS-LC8	NS-PC8 (Surround)	NS-PL8 (Centre)
Woofers	16cm cone	7cm cone	Dual 7cm cone
Midrange Driver	Tri 7cm cone		
Tweeter	3cm aluminium dome	2.2cm balanced-dome	3cm aluminium dome
Frequency Response	60 Hz-20 kHz	100 Hz-20 kHz	85 Hz-20 kHz
Sensitivity	86 dB/2.83 V/1 m	84 dB/2.83 V/1 m	84 dB/2.83 V/1 m
Input Power (Max/Nominal)	120 W/20 W	50 W/10 W	100 W/15 W
Impedance	6 ohms	6 ohms	6 ohms
Dimensions (W x H x D)	200 x 1,100 x 260 mm*	104 x 300 x 170 mm	384 x 104 x 170 mm
Weight	14 kg/unit	1.8 kg/unit	2.4 kg

PCL-5-Series	NS-LC5	NS-PC5 (Surround)	NS-PC5 (Centre)	NS-LC3	NS-ELC3	NS-CLC3
Woofers	Dual 8cm cone	8cm cone	Dual 8cm cone	Quad 7cm cone	Dual 7cm cone	Dual 7cm cone
Tweeter	3cm aluminium dome	2.2cm balanced-dome	3cm aluminium dome	2.2cm balanced-dome	2.2cm balanced-dome	2.2cm balanced-dome
Frequency Response	70 Hz-20 kHz	100 Hz-20 kHz	80 Hz-20 kHz	85 Hz-20 kHz	120 Hz-20 kHz	120 Hz-20 kHz
Sensitivity	86 dB/2.83 V/1 m	84 dB/2.83 V/1 m	86 dB/2.83 V/1 m	87 dB/2.83 V/1 m	85 dB/2.83 V/1 m	85 dB/2.83 V/1 m
Input Power (Max/Nominal)	100 W/15 W	50 W/10 W	100 W/15 W	100 W/15 W	50 W/10 W	50 W/10 W
Impedance	6 ohms	6 ohms	6 ohms	6 ohms	6 ohms	6 ohms
Dimensions (W x H x D)	270 x 1,104 x 270 mm*	96 x 234 x 144 mm	327 x 96 x 144 mm	230 x 1,090 x 230 mm*	85 x 240 x 109 mm	240 x 85 x 109 mm
Weight	8.2 kg/unit	1.7 kg/unit	2.5 kg	5.6 kg/unit	1.1 kg/unit	1.1 kg

\* With anchor

Integrated Amplifiers	AX-596	AX-496	AX-396
Output Power (4 Ohms, 1 kHz, 0.7% THD)	155 W/Ch	120 W/Ch	95 W/Ch
High Dynamic Power/Low-Impedance Drive Capability Dynamic Power/Ch (8/4/2 Ohms)	Yes 140/220/290 W	Yes 130/185/220 W	Yes 100/140/150 W
Linear Damping Damping Factor (8 Ohms, 20 Hz-20 kHz)	Yes 320 (speaker A)	Yes 240 (speaker A)	Yes 240 (speaker A)
CD/DVD Direct Amplification Circuit	With switch	With switch	With switch
Signal-to-Noise Ratio (CD)	110 dB (CD/DVD Direct on)	110 dB (CD/DVD Direct on)	110 dB (CD/DVD Direct on)
Frequency Response	20 Hz-100 kHz +0.5/-3 dB	20 Hz-100 kHz +0.5/-3 dB	20 Hz-100 kHz +0.5/-3 dB
Dimensions (W x H x D)	435 x 151 x 396 mm	435 x 151 x 391 mm	435 x 151 x 391 mm
Weight	10.6 kg	9.5 kg	8.7 kg

Receivers/Tuners	RX-797	RX-496RDS	RX-396RDS	TX-592RDS	TX-492RDS
Pure Direct	Yes	Yes	Yes		
Output Power (4 Ohms, 1 kHz, 0.7% THD)	160 W/ch	105 W/Ch	55 W/Ch		
High Dynamic Power/Low-Impedance Drive Capability Dynamic Power/Ch (8/4/2 Ohms)	Yes 140/220/290 W	Yes 105/150/178 W	Yes 70/89/100 W		
Linear Damping Damping Factor (8 Ohms, 20 Hz-20 kHz)	Yes 240 (speaker A)	Yes 100	Yes 100		
Signal-to-Noise Ratio (CD)	110 dB (CD Direct on)	108 dB	108 dB		
Frequency Response	10 Hz-100 kHz $\pm$ 1 dB	20 Hz-20 kHz $\pm$ 0.5 dB	20 Hz-20 kHz $\pm$ 0.5 dB		
FM Usable Sensitivity (DIN) Mono	1 $\mu$ V	0.9 $\mu$ V	0.9 $\mu$ V	0.9 $\mu$ V	0.9 $\mu$ V
FM Selectivity (Two Signals)	70 dB	70 dB	70 dB	70 dB	70 dB
FM Signal-to-Noise Ratio (DIN) Mono/Stereo	76 dB/70 dB	75 dB/70 dB	75 dB/70 dB	75 dB/70 dB	75 dB/70 dB
Harmonic Distortion (40 kHz Dev.) Mono/Stereo	0.2%/0.3%	0.1%/0.2%	0.1%/0.2%	0.1%/0.2%	0.1%/0.2%
Frequency Response (30 Hz-15 kHz)	$\pm$ 1.5 dB (20 Hz-15 kHz)	$\pm$ 1.5 dB	$\pm$ 1.5 dB	$\pm$ 1.5 dB	$\pm$ 1.5 dB
Dimensions (W x H x D)	435 x 151 x 390 mm	435 x 146 x 309 mm	435 x 146 x 309 mm	435 x 86 x 289 mm	435 x 86 x 278 mm
Weight	10.9 kg	8.2 kg	6.4 kg	3.2 kg	3.2 kg

CD Players	CDX-596	CDX-496	CDX-396	CDC-685	CDC-585
Harmonic Distortion + Noise	0.003%	0.003%	0.003%	0.003%	0.003%
Frequency Response	2 Hz-20 kHz $\pm$ 0.5 dB	2 Hz-20 kHz $\pm$ 0.5 dB	2 Hz-20 kHz $\pm$ 0.5 dB	2 Hz-20 kHz $\pm$ 0.5 dB	2 Hz-20 kHz $\pm$ 0.5 dB
Signal-to-Noise Ratio	115 dB	105 dB	105 dB	106 dB	106 dB
Dynamic Range	96 dB	96 dB	100 dB	95 dB	95 dB
Dimensions (W x H x D)	435 x 96 x 277 mm	435 x 96 x 277 mm	435 x 96 x 277 mm	435 x 116 x 404 mm	435 x 116 x 404 mm
Weight	3.7 kg	3.7 kg	3.7 kg	5.9 kg	5.9 kg

Cassette Decks	KX-493	KX-393	KX-W321
Wow & Flutter (W RMS)	0.05%	0.07%	0.08%
Signal-to-Noise Ratio (NR Off/Dolby B/C)	60/68/76 dB	58/66/74 dB	58/66/74 dB
Frequency Response (Metal)	20 Hz-20 kHz $\pm$ 3 dB	20 Hz-19 kHz $\pm$ 3 dB	20 Hz-19 kHz $\pm$ 3 dB
Dimensions (W x H x D)	435 x 126 x 279 mm	435 x 126 x 283 mm	435 x 146 x 279 mm
Weight	4.5 kg	4.4 kg	5 kg

HDD + CD-R/RW Digital Audio Recorders	CDR-HD1500	MiniDisc Recorder	MDX-596
Frequency Response	5 Hz-20 kHz $\pm$ 0.5 dB	Frequency Response	5 Hz-20 kHz $\pm$ 0.5 dB
Playback S/N Ratio	105 dB	Signal-to-Noise Ratio	99 dB
Playback Dynamic Range	99 dB	Input Level (Line)	300 mV/50 k-Ohms
Playback THD + Noise	0.004%	Sampling Frequency	44.1 kHz
Recording S/N Ratio	92 dB	Dimensions (W x H x D)	435 x 96 x 288 mm
Recording Dynamic Range	92 dB	Weight	4 kg
Recording THD + Noise	0.006%		
Dimensions (W x H x D)	435 x 116 x 415 mm		
Weight	8.2 kg (except HDD)		



"d-cinema" is the slogan of Yamaha A/V products and technology, reflecting our focus on digital technology and our leadership in creating and refining digital home theatre.




Yamaha's unique technology for the creation of sound fields is capable of powerfully reproducing the three-dimensional environment that movie sound engineers aim to convey, in any audio format from monaural to the latest multi-channel digital surround. It is compatible with DVD and all other A/V sources. Yamaha CINEMA DSP technology has received a patent in the U.S. (Patent No. 5,261,005).



"SILENT" is a trademark of Yamaha Corporation.



PlayXchange is a registered trademark in the U.S. Yamaha has received a patent for PlayXchange technology in the U.S. (Patent No. 5,115,419).

- "Digital Sound Projector" and the  logo are trademarks of 1 Ltd.
- Dolby, Pro Logic and Double D are trademarks of Dolby Laboratories Corporation.
- DTS, DTS-ES and Neo:6 are trademarks of Digital Theater Systems, Inc.
- THX and the THX logo are registered trademarks of THX Ltd.
- Surround EX is a jointly developed technology of THX and Dolby Laboratories, Inc. and is a trademark of Dolby Laboratories, Inc.
- HQV and Hollywood Quality Video are trademarks of Silicon Optix, Inc.
- Burr-Brown products are trademarks of Texas Instruments, Inc.
- "DCDi" is a trademark of Faroudja, a division of Genesis Microchip, Inc.
- NSV is a trademark of Analog Devices, Inc.
- "i.LINK" and the "i.LINK" logo are trademarks of Sony Corporation.
- Digital Light Processing, DLP, Digital Micromirror Device and DMD are trademarks of Texas Instruments, Inc.
- HDMI, the HDMI logo and High-Definition Multimedia Interface are trademarks or registered trademarks of HDMI Licensing LLC.
- SHOWVIEW is a trademark of Gemstar Development Corp.
- Oplus™ is the Display Processing Division in Intel Company.
- The Gracenote logo, logotype, and CDDB are registered trademarks of Gracenote Music Recognition Service.
- TruBass and the SRS symbol are trademarks of SRS Labs, Inc.
- Screen images are simulated.
- Product designs and specifications are subject to change without notice.

For details please contact:

### Yamaha Elektronik Europa GmbH

Siemensstr. 22-34  
D-25462 Rellingen  
Germany  
Tel: ++49 4101 3090

Visit us at our website:  
<http://www.yamaha-online.de>



CREATING 'KANDO' TOGETHER

YAMAHA CORPORATION  
P.O.Box 1, Hamamatsu, Japan



F10017659

GEN 10510 T